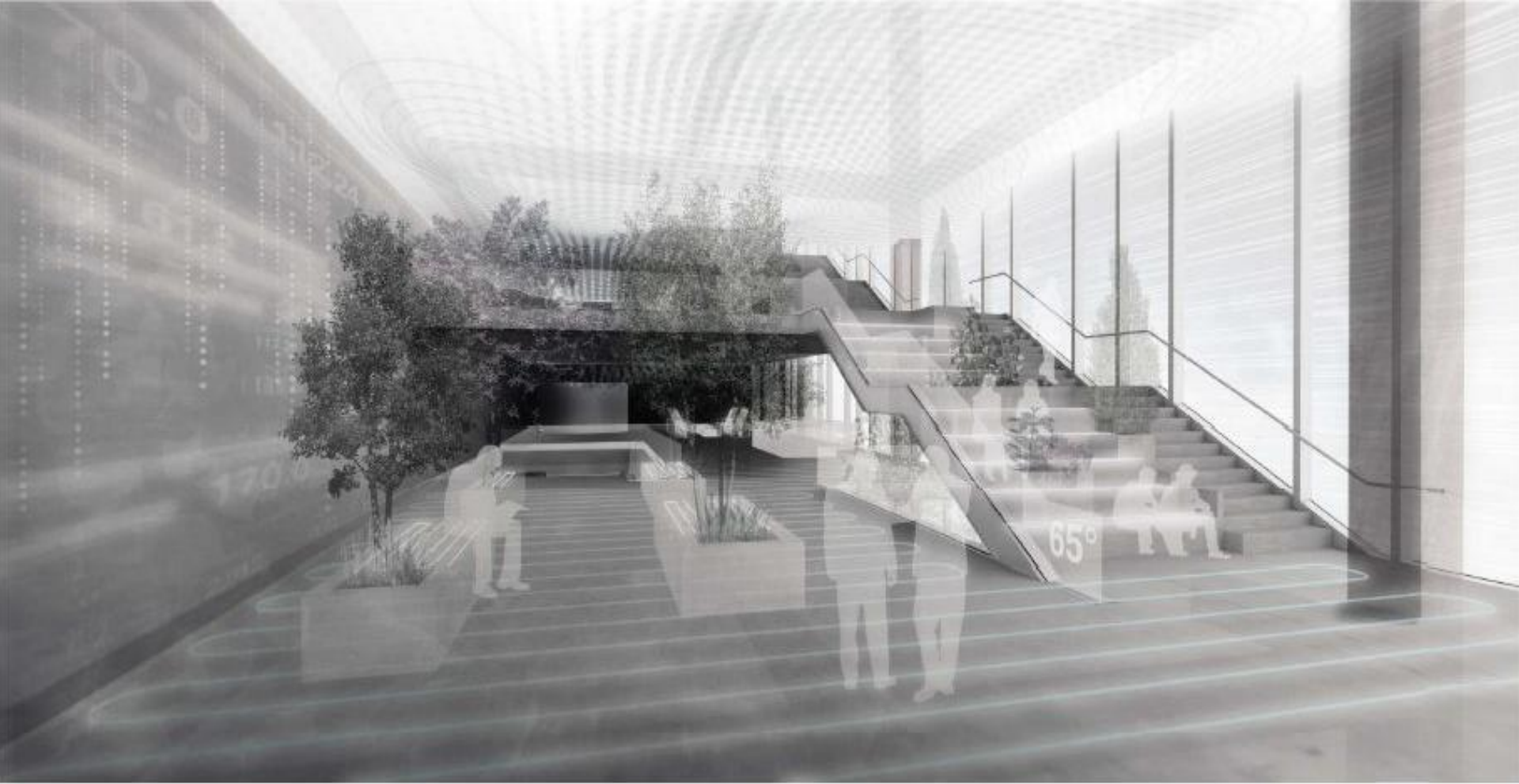


# How Will We Work in 2020?

More than 200 architects and designers have helped answer the question: how will we work in 2020, presenting concepts that span the re-imagining of office furniture to managing employee health through temperature and light to maximizing multifunctional space.

Insights for “How Will We Work in 2020?” were presented as part of a contest hosted by Business Interiors by Staples, the furniture and interior design division of Staples Advantage, and Metropolis, the magazine of architecture, culture and design.

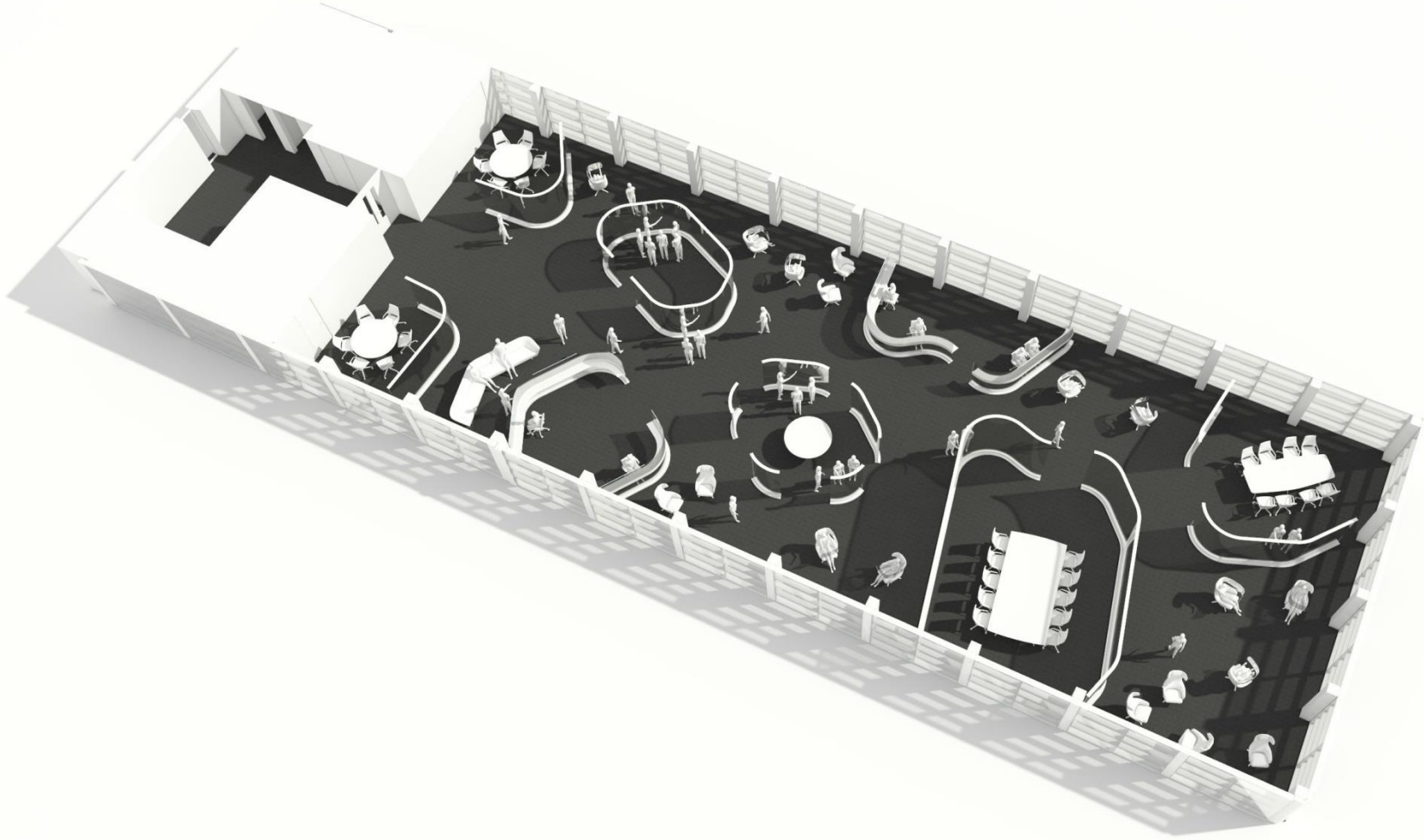
Here are the 12 finalists’ submissions and, in their words, how they imagine we’ll work in 2020.



**Winning Submission: Joseph Filippelli, “Vertical Flux: The Office Tower as Fluctuating Atmospheres”**

By restructuring the typical horizontal floor plate as a vertical module with penetrations that allow heat to naturally flow upward, a variety of temperature and lighting zones are created. Thanks to emerging advancements in mobile technology and active work surfaces, occupants are free to seek out an appropriate atmosphere.

The employment of thermally active furniture throughout then provides opportunities for comfort customization and privacy. The vertical modules, which are comprised of diverse climatic comfort zones allowing people to make choices about their work environment, contain a continuous circulation path.



**RUNNER-UP: Eckhart, “CoLab” (Team: Frank van H., Britt B., Sander M., Pauline Q.)**

Focusing on collaboration and interaction versus classic concentrated work and formal meetings, the CoLab spatial structure addresses the need for flexibility and variety, with fluid and flexible partitions creating a wide range of different spatial types for different functions.

The spatial structure is not just a partition, but becomes the cornerstone of the new CoLAB office. Every surface becomes a display, with integrated interface technology. The partition itself is made from glass, which is curved both to allow for organic flow in the space and for optimal sight lines for users.



**Scott Klinker Product Design, “Live Work Platforms” (Team: Site L., Mike D., Ryan P.)**

The old model of the office as a sea of desks is replaced by a vision of the office as a social club where people are visible, accessible and engaged in a variety of behaviors. Live/Work Platforms make this new model of the office obvious by remixing the old parts into new relationships. Old typologies like chair, desk, lamp, sofa, rug and conference table are integrated and collaged into layered platforms of mixed materials like upholstery, cast concrete and wood. Many postures are supported from lounging to standing-height work and from individual to group work – with easy transitions between modes.



**University of Cincinnati School of Architecture and Interior Design, “PopUP: The Rise of the Mobile Worker and the use of Vacant Space” (Team: Kathryn Haley)**

PopUP is a modular, easily deployable office system that is set up in a matter of minutes and contains work, lounge, and power furniture pieces all packaged in boxes that can be transported by truck to any site. Vacant spaces outfitted with the collapsible furniture allow for many work zones and configurations to be created as desired and enables the worker to work when and where it suits their needs. Whether a person wants a shorter commute, an office while traveling or an alternative to the home office, the PopUP system is the solution.

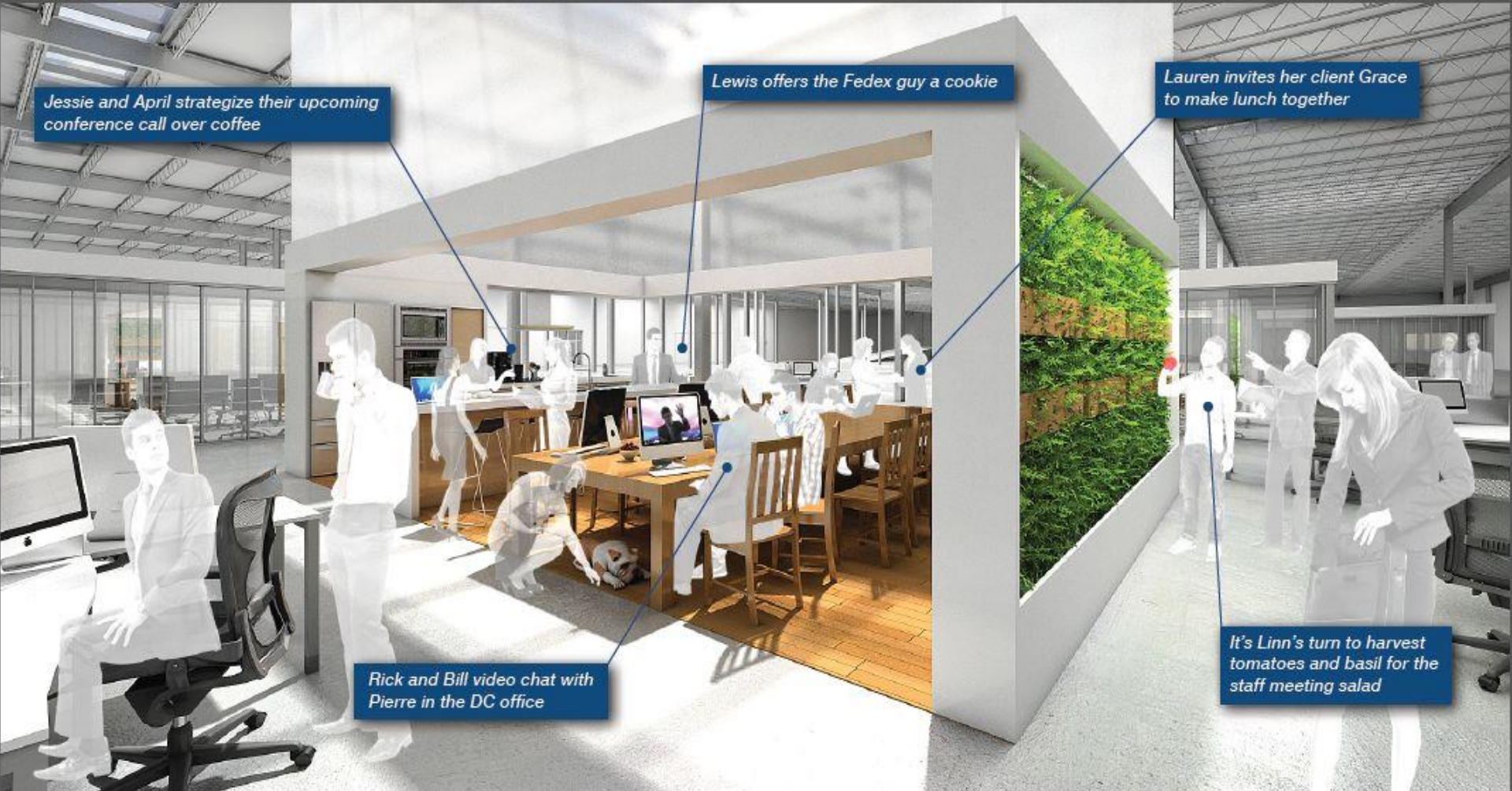
The PopUP system is available for as long as the building owner needs it for their space.



**University of Cincinnati School of Architecture and Interior Design, “NEXUS: The locomotion of business” (Team: Angie T., Matthew F., Mina L.)**

With mobile workers becoming a trend, harnessing the time spent travelling and making that time productive for passengers became a focus in the design. Nexus, the train car, improves the conditions spatially and sustainably with open spaces free to move about the train to the comfort of the worker.

The variety of spaces on this train allows for both quick commuter trips, with touch down kiosks, as well as long cross-country trips, with comfortable long-term seating options. The spaces inside the unit reflect the independent and individual workers of the future.



Jessie and April strategize their upcoming conference call over coffee

Lewis offers the Fedex guy a cookie

Lauren invites her client Grace to make lunch together

Rick and Bill video chat with Pierre in the DC office

It's Linn's turn to harvest tomatoes and basil for the staff meeting salad

**Leo A. Daly, "Working Rediscovered" (Team: Linn B., Glenn W., Jessie B., Bill B., Rick B., Joy B., Andrew R., April D., Grace V., Alan S., Lauren P., Pierre G., Jess K.)**

In our design submission, the "kitchen"—namely The Table—serves as the primary organizing feature. It is the main focal point of the office, bringing opportunities for business collaboration that is both personal and professional.

Our entry serves human needs by providing a space to integrate work and life in the everyday workplace. It is rooted in familiarity, social communion, and a connection to the earth, similar to the ethic of the popular farm-to-table movement.



**Gensler Dallas, “The ANYPLACE” (Team: Paul M., Jean W., Lindsey M., Ashley R., Stephen W., Francisco B., Gracie A., Katie C., Mark H., Michael C.):**

“Work is what I do, not where I do it. It's no longer about a place.” In order to support population growth in urban areas, this design increases functional space within an existing city without adding to its footprint. Filling unused space within the city block with multipurpose hubs allows varied amenities to be accessible within a community.

Convenient access to these amenities supports a work/life blend, ultimately resulting in a happier, healthier, more productive employee.

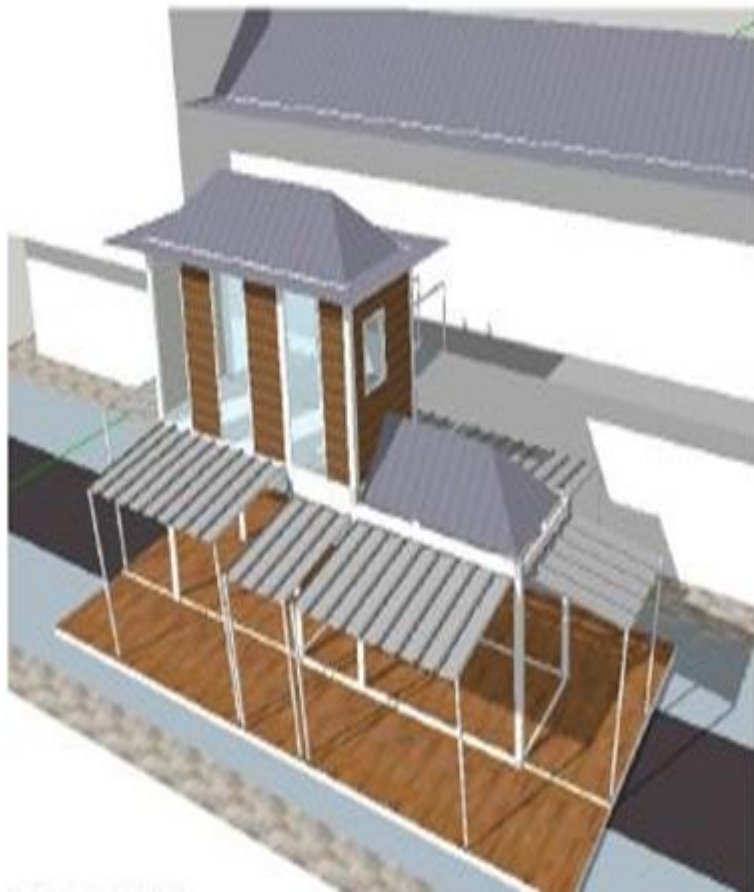




**Gensler Newport Beach, “Connect 4” (Team: Stacey O., Josjua P., Ashley W., Alison W., Ximena S., Mariela L., Mark M., Baha S., Nic B., Lisbeth M.)**

The construction of interconnecting bridges to join two high-rise towers creates new, useable space with 360 degrees of environmental exposure. These spaces will house new site amenities that bring together a variety of personnel for chance meetings, increasing connectivity between unrelated professionals.

By creating a site with greater variety of accessible amenities, people are more likely to take advantage of something the workplace offers besides a desk and computer. This means that movement throughout the space occurs, enhancing well being, and ultimately increasing productivity and financial gain.



### Chongqing University, “The City...Our Workplace” (Team: Cheng Hum Yuen)

Instead of creating the workplace in a new high-rise building office, destroying the old to make place for the new, the concept is to integrate the workplace in the existing infrastructure, bringing together the new with the old, giving the city and its citizens back their identity and pride.

The small structural addition made is very superficial; the pavilions are made from used containers (upcycle) easily mounted and dismantled (if needed). The facade, rooftop and eaves replicates the local vernacular architecture.



**TEAGUE, “INTERSECT” (Team: C. Campbell, M. Geiman, K. Kelly, K. Kim, A. Naples, L. Prins, R. Viernes, N. Vigg)**

We imagine a new work environment in which individuals, corporations, and communities can all benefit through the sharing of skills, experiences, spaces, and cultures. We envision a unique opportunity to leverage unused or redundant spaces for the good of the developing and developed world alike. The system would be manufactured with lightweight recycled LDPE plastic.

Parts are reused for a variety of functions, limiting manufacturing complexities. The system is easy to assemble and disassemble - increasing the ability to reuse in multiple configurations. Lightweight properties reduce transportation costs.



**“Network - Connecting Virtual and Physical Data Points” (Team: Brian B., Milena J., Hannah D., Kathy K., Megan N., Eric T., Zach K., Yeesan L., Kelley B.)**

Our concept vision is rooted in the desire for man to keep pace with technology while at the same time striving to stay grounded to societies roots and each other.

The solutions provide for a healthy and active workspace that will bring nature, movement, and community engagement together across all areas of the building. For business, those small and large can come together in dynamic partnerships not possible in the workplace of today which will result in cross-disciplinary partnerships forging innovation.



### Architecture, “ADDspace” (Team: Helen Bentley)

Because of ease of reservations and affordability, ADDspace is economically competitive to the real estate market and helps startups focus their resources on expanding their ideas and products. Through flexibility of moving desks and creating collaborative environments, as well as networking events and social gatherings, ADDspace addresses social needs of workspace users while simultaneously catalyzing creativity and new ideas.

ADDspace furniture is a kit-of-parts for building grassroots co-working spaces. Since any available vacant public or privately owned space can become an ADDspace, the furniture has to support a variety of needs and withstand a wide range of environmental conditions.

To share your thoughts on how we'll work in 2020, visit [blog.staplesadvantage.com](https://blog.staplesadvantage.com)