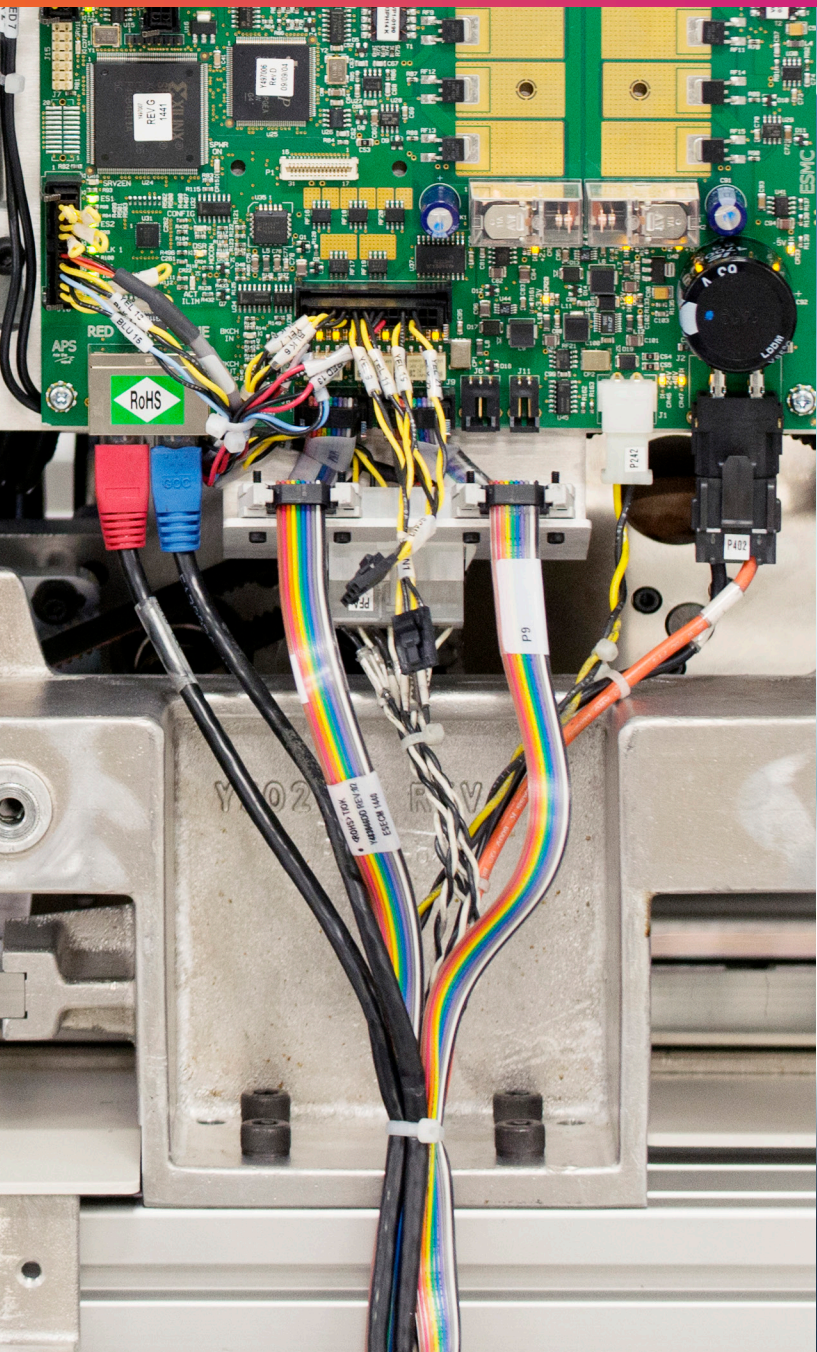


Smarter machines.  
More informed operators.  
Clarity solutions suite ushers in a new era of productivity.





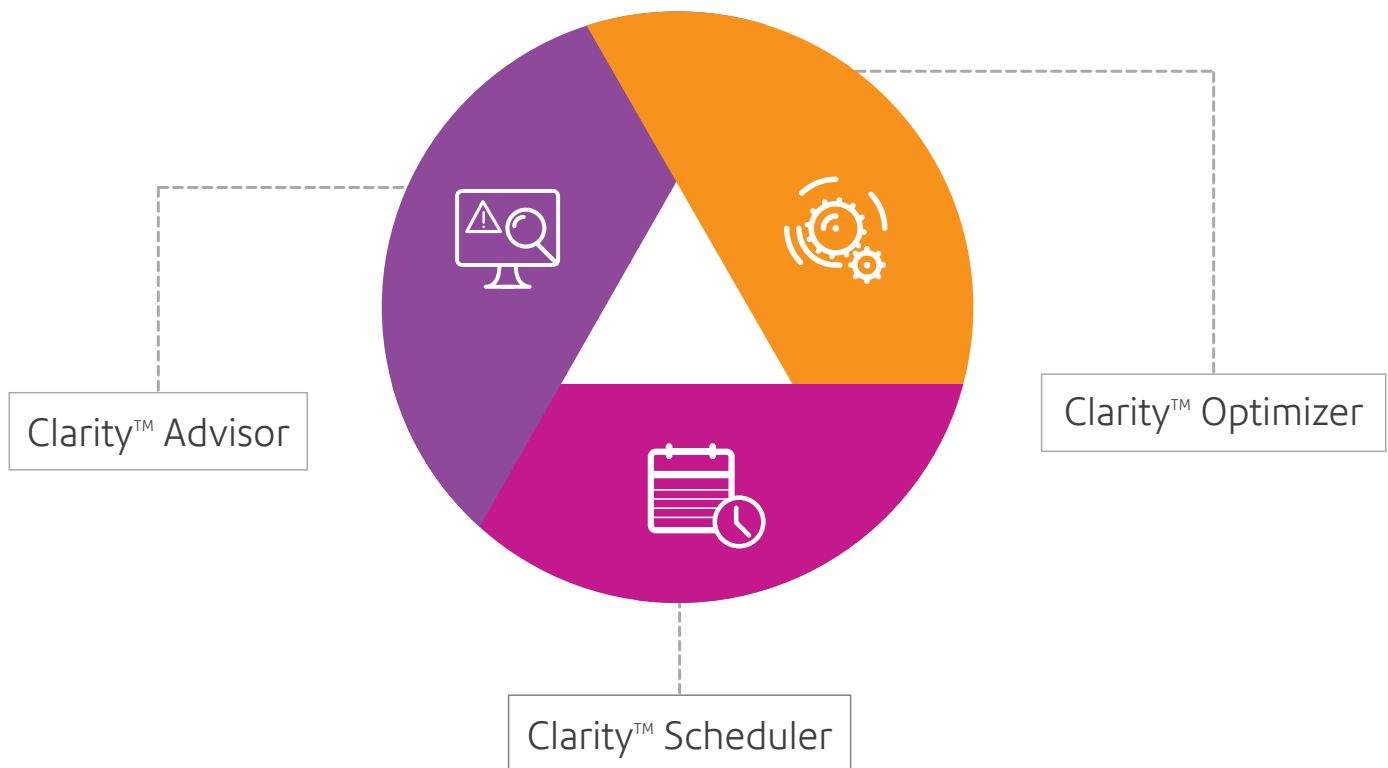
# Introducing Clarity™ solutions suite.

---

With three SaaS-based applications dedicated to improving efficiencies across multiple aspects of your business workflow, Clarity solutions suite is the ultimate tool for maximum output and minimum downtime.

Take advantage of three cutting-edge software tools that work together to work for you.

The smarter way to increase productivity.



Joining forces with GE, Pitney Bowes uses the proven technology of the GE Predix™ platform to power Clarity Solutions.

# Clarity™ Advisor

---

By analyzing your machine's critical performance information, Clarity Advisor monitors operation trends and works to predict issues before they happen.



Expert support through remote technical service team.



Improved results supported by outcome-based service support.



Quarterly reports with performance insight.

## Predictive maintenance

Operation runs with no apparent flaws.

Unseen inefficiency detected and analyzed by Advisor.

Exact replacement part recommended.

Significant downtime avoided.



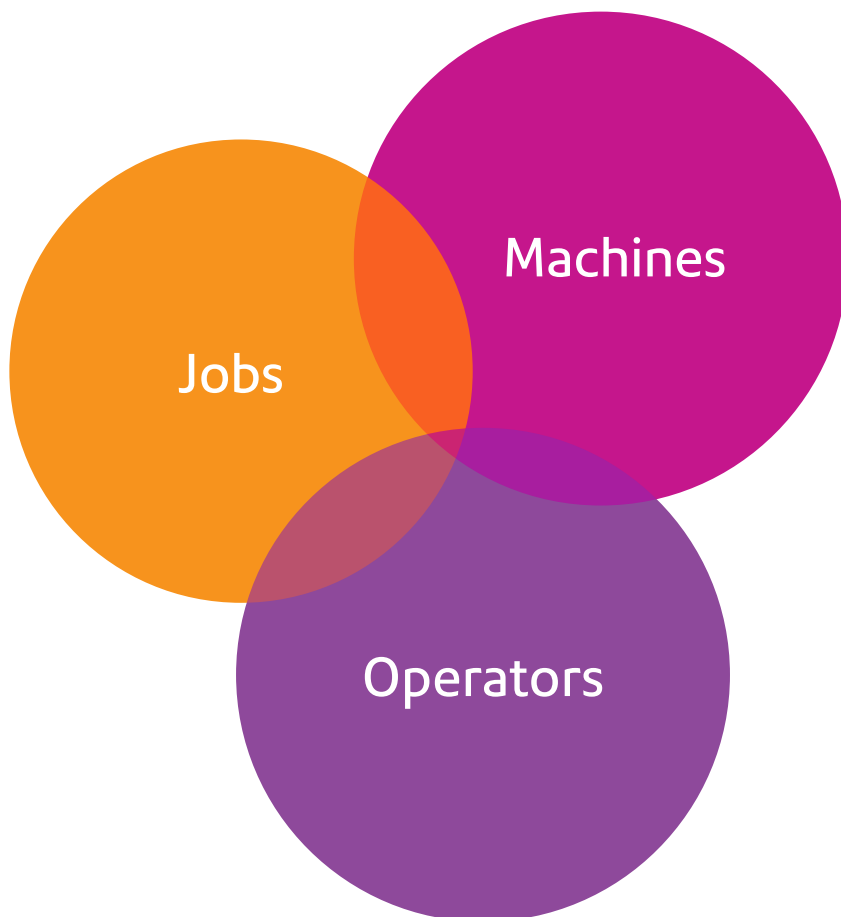
# +10%

Achieve up to 10% increased efficiency with these advanced diagnostics.

# Clarity™ Optimizer

---

The perfect blend of man and machine, Clarity Optimizer monitors the interactions between jobs, machines and operators in order to help you determine what combination of the three will produce the best yield.



Reports on production trends.



Insight into workflow deviations that may cause inefficiencies.



No major IT system upgrade or manual data collection required.



**Greater yield.**

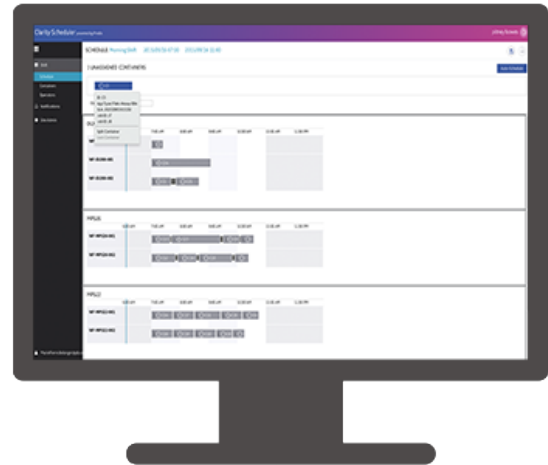
Unlock additional capacity with optimal combinations of jobs, machines and operators.

# Clarity™ Scheduler

A fully automated solution, Clarity Scheduler learns your related business operations over time to optimize your job schedule, allowing you to manage priorities and better meet deadlines easier than ever.

## Dynamic scheduling.

The intelligent scheduling tool adapts to your workflow, handling variables such as available operators, jobs in production and planned downtime to create a custom job plan.

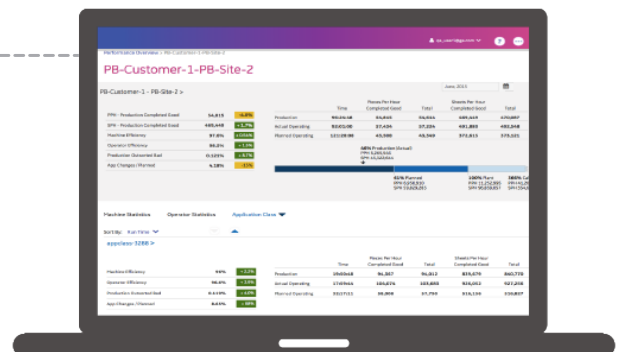


## Optimized production.

Take advantage of efficiently paired jobs, operators and machines and reduce lost seconds of productivity.

## Interactive planning.

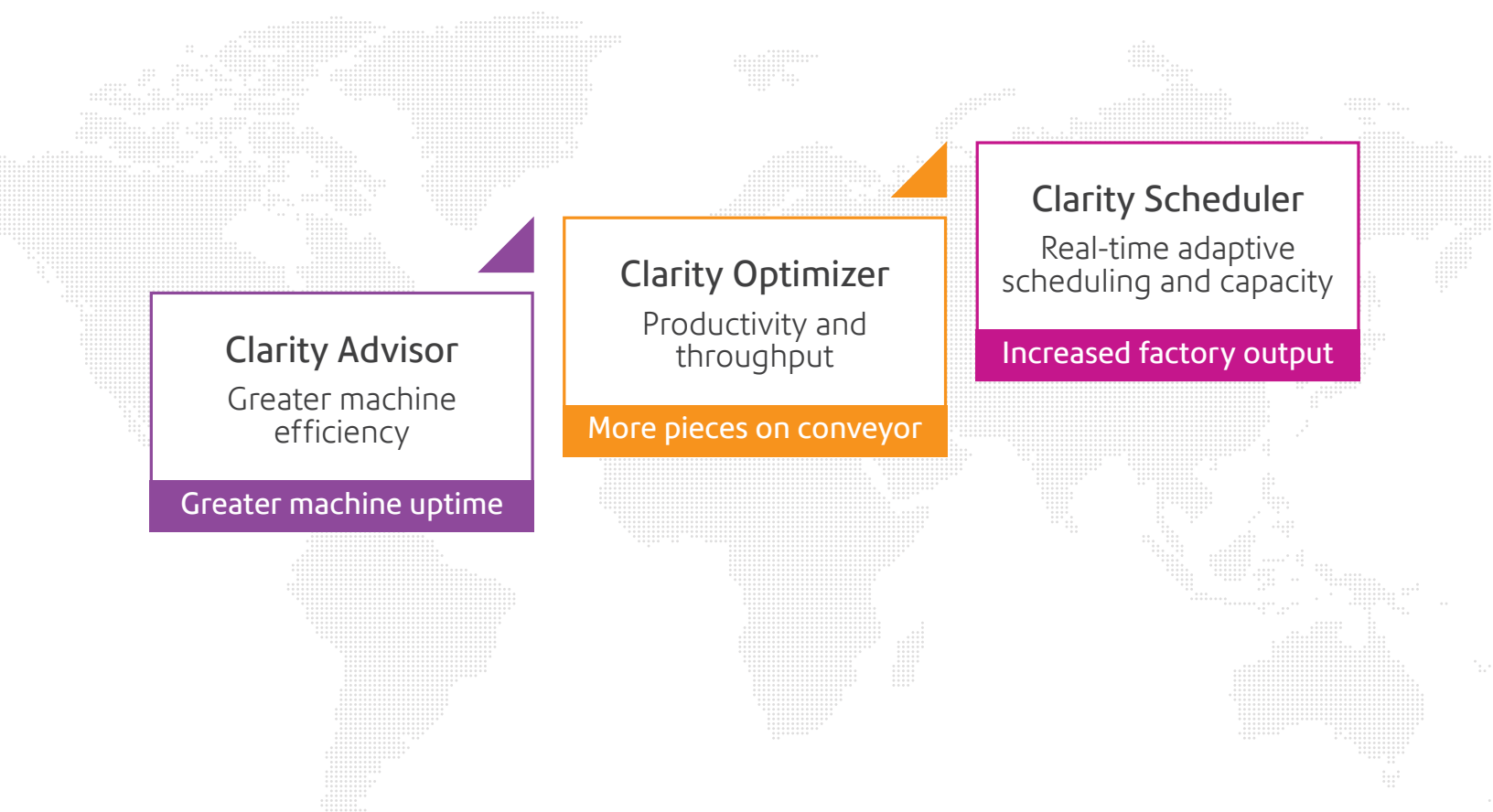
Whether you have a last-minute priority or an unexpected assignment, enjoy total control by dragging and dropping jobs on the interactive planning screens.



# Working together to work for you.

---

Not only do these systems work with each other to create unsurpassed productivity, they also securely learn from global business analytics to help ensure you're always on top of industry standards.



**Clarity Advisor**  
Greater machine efficiency  
Greater machine uptime

**Clarity Optimizer**  
Productivity and throughput  
More pieces on conveyor

**Clarity Scheduler**  
Real-time adaptive scheduling and capacity  
Increased factory output

## United for your success.

Though each performs a unique function, Advisor, Optimizer and Scheduler share information as one system, using data monitoring to enhance optimization, and production trends to inform scheduling.

It's one cohesive, comprehensive look into your daily and overall operations.

## A global connection.

Drawing from real-time insights on industry benchmarks and best practices, Clarity consistently and continuously supports your business success and growth.

It's the visibility you need to reach your operational goals.

# Your questions about Clarity, answered.

---

## What equipment is compatible with Clarity solutions?

Clarity works with your existing Pitney Bowes inserter technology. A fully integrated and connected software solution, Clarity communicates with your network of Pitney Bowes inserting machines to create an optimized workflow that is completely unique to your business.

---

## Do all three components of Clarity work separately?

Clarity solutions suite includes Advisor, Optimizer and Scheduler, each of which can be implemented individually. To achieve full benefits of Clarity capabilities, each application can work together cohesively by sharing critical operation data to maximize your productivity.

---

## How much will my operational efficiency improve?

Clarity solutions suite is designed specifically to help maximize productivity and minimize downtime. In order to reach optimal efficiencies for your specific business needs, we will baseline your operation to set an improvement target.

**United States**

37 Executive Drive  
Danbury, CT 06810-4147

For more information, call 877 406 7704  
or visit us online: [pitneybowes.com](http://pitneybowes.com)

Pitney Bowes, the Corporate logo, Clarity, Clarity Advisor, Clarity Optimizer and Clarity Scheduler are trademarks of Pitney Bowes Inc. or a subsidiary. All other trademarks are the property of their respective owners.

©2015 Pitney Bowes Inc. All rights reserved.

