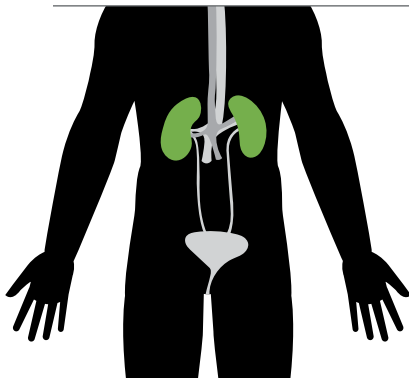
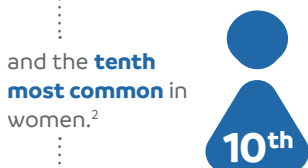


WHAT IS RENAL CELL CARCINOMA?



RENAL CELL CARCINOMA (RCC) is the most common type of kidney cancer.¹ In 2017, it is estimated that nearly **64,000** new cases will be diagnosed and approximately **14,400** people will die from RCC in the United States.²

HOW COMMON IS RCC?

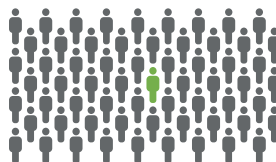


QUICK FACTS⁴



9 out of 10 cases of kidney cancers are RCC

1 in 63 people will develop kidney cancer in his or her lifetime



The average age at diagnosis is **64**

WHAT ARE THE TREATMENT OPTIONS?⁵

Five types of treatment are typically used in patients with RCC:



SURGERY



RADIATION THERAPY



BIOLOGIC THERAPY (including immunotherapy)



TARGETED THERAPY



CHEMOTHERAPY

WHAT ARE SOME COMMON RISK FACTORS?⁶



SMOKING



GENETICS



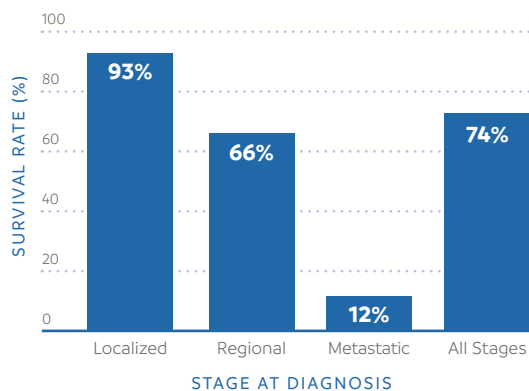
OBESITY



HIGH BLOOD PRESSURE

WHAT IS THE OUTLOOK?²

Five-year survival rates by stage at diagnosis:



MEDIA CONTACT

Lindsay Treadway
Public Affairs
Exelixis, Inc.

(650) 837-7522
ltreadway@exelixis.com



¹National Cancer Institute. Kidney Cancer - Patient Version. (<http://www.cancer.gov/types/kidney>) Accessed September 1, 2017. ²American Cancer Society. Cancer Facts & Figures 2017. Atlanta: American Cancer Society; 2017. ³National Cancer Institute. SEER Stat Fact Sheets: Kidney and Renal Pelvis Cancer. (<http://seer.cancer.gov/statfacts/html/kidrp.html>). Accessed September 1, 2017. ⁴American Cancer Society. Kidney Cancer (<http://www.cancer.org/acs/groups/cid/documents/webcontent/003107-pdf.pdf>). Accessed September 1, 2017. ⁵National Cancer Institute. Renal Cell Cancer Treatment - Patient Version (https://www.cancer.gov/types/kidney/patient/kidney-treatment-pdq#section/_50). Accessed September 1, 2017. ⁶National Cancer Institute. Genetics of Kidney Cancer. (<http://www.cancer.gov/types/kidney/hp/kidney-genetics-pdq>). Updated December 2, 2016. Accessed September 1, 2017.