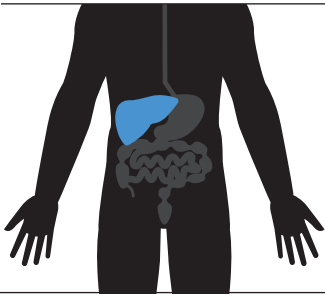
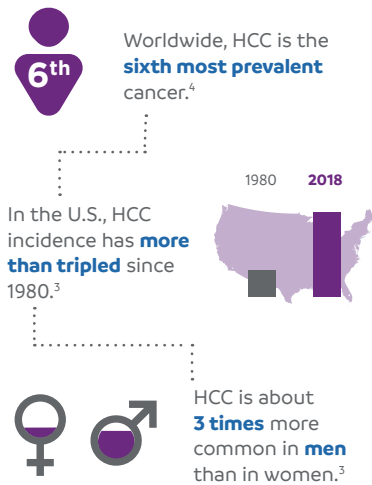


WHAT IS HEPATOCELLULAR CARCINOMA?



HEPATOCELLULAR CARCINOMA (HCC) is the most common type of liver cancer, accounting for between 85% and 90% of primary liver cancers.^{1,2} In 2018, it is estimated that **42,000** new cases of liver cancer will be diagnosed and approximately **30,000** people will die from liver cancer in the U.S.³

HOW COMMON IS HCC?



QUICK FACTS



The median age at diagnosis in the U.S. is **63** years old.⁵

This type of liver cancer is the **third leading cause** of cancer-related deaths worldwide.⁴



HCC related to hepatitis C infection has become the **fastest-rising cause** of cancer-related deaths in the U.S.⁶

Liver cancer is more common in countries in sub-Saharan Africa and Southeast Asia than in the U.S. In many of these countries, it is the **most common** type of cancer.⁷



WHAT ARE THE TREATMENT OPTIONS?

Commonly used treatment options for patients with HCC include:



SURVEILLANCE



SURGERY



LIVER TRANSPLANT



ABLATION THERAPY*



EMBOLIZATION THERAPY**



TARGETED THERAPY



RADIATION THERAPY

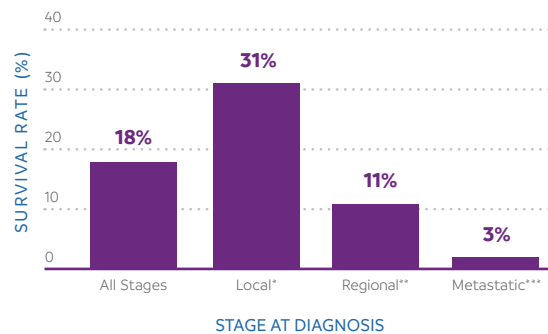
* Removes or destroys body tissue
 ** Use of substances to block or decrease the flow of blood

WHAT ARE SOME COMMON RISK FACTORS?



WHAT IS THE OUTLOOK?

Five-year survival rates by stage at diagnosis:



* The cancer has not spread beyond the liver.
 ** The cancer has spread to nearby lymph nodes, tissues or organs.
 *** The cancer has spread to distant parts of the body.

MEDIA CONTACT

Lindsay Treadway
 Public Affairs and Advocacy Relations
 Exelixis, Inc.

(650) 837-7522
ltreadway@exelixis.com



1. National Cancer Institute. Liver and Bile Duct Cancer—Patient Version. (<https://www.cancer.gov/types/liver>). Accessed January 2018. 2. El-Serag, Hashem B. et al., Hepatocellular Carcinoma: Epidemiology and Molecular Carcinogenesis. *Gastroenterology* 2007, Volume 132, Issue 7, 2557 - 2576. 3. American Cancer Society. Cancer Facts & Figures 2018. (<https://www.cancer.org/content/dam/cancer-org/research/cancer-facts-and-statistics/annual-cancer-facts-and-figures/2018/cancer-facts-and-figures-2018.pdf>). Accessed January 2018. 4. Forner A, Llovet JM, Bruix J: Hepatocellular carcinoma. *Lancet* 379 (9822): 1245-55, 2012. 5. National Cancer Institute. SEER Stat Fact Sheets: Liver and Intrahepatic Bile Duct Cancer. (<https://seer.cancer.gov/statfacts/html/livibd.html>). Accessed January 2018. 6. Blue Faery. Statistics. (<http://www.bluefaery.org/statistics/>). Accessed January 2018. 7. American Cancer Society. Key Statistics About Liver Cancer. (<https://www.cancer.org/cancer/liver-cancer/about/what-is-key-statistics.html>). Accessed January 2018. 8. National Cancer Institute. Adult Primary Liver Cancer Treatment (PDQ®)—Patient Version. (https://www.cancer.gov/types/liver/patient/adult-liver-treatment-pdq#link/_1). Accessed January 2018.