

LOOK BOOK

#MYGILLETESHAVE



Gillette

**One Size Does Not
Fit Every Man.**

One size does not fit every man.
That's true with everything from
razors to clothes. And it's why
Gillette offers a wide range
of products so every guy can
get a comfortable shave at a
comfortable price, regardless of
his style, skin needs or budget.

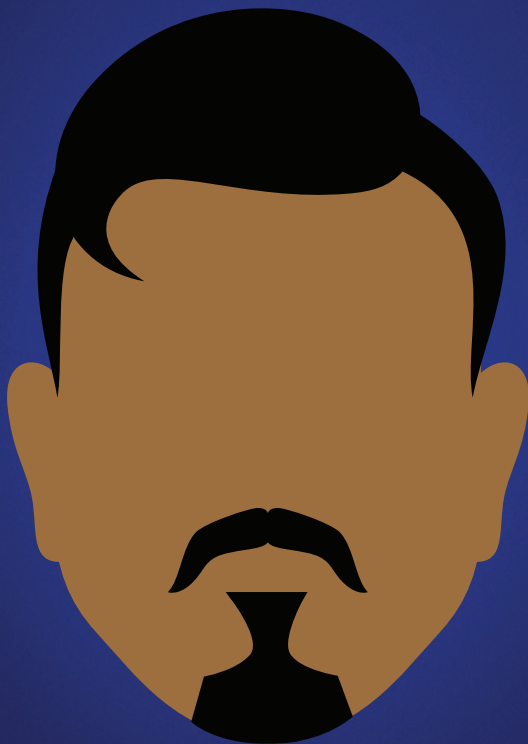


THE ORIGINAL 'STACHE LOOK



There's nothing better than a timeless classic that is both clean and bold. If you're looking for a modern take on this original look, consider the Gillette Sensor3, with its anti-slip rubber handle for total control and maneuverability. The Gillette Sensor3 offers up to 10 smooth shaves per razor.

Sensor[®]3



THE ROYALE BEARD LOOK



A look that's fit for a king (or at least named after one) can be achieved with the precision of the Gillette Fusion5 ProShield. Thanks to lubrication before and after the blades, guys are shielded from irritation. Be sure to make use of the Fusion5's Precision Trimmer on the back for hard to reach areas and to shape the mustache or define those chin strip edges to perfection.



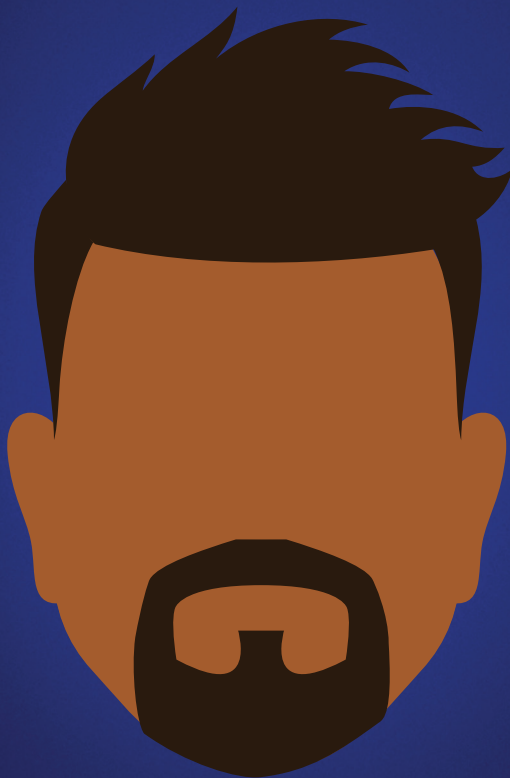


THE CHIN STRAP BEARD LOOK



The Chin Strap, a bold look for the type of guy who walks around with his chin up and head held high. You'll be aiming to achieve perfect beard-line symmetry by shaving your cheeks, neck and mustache evenly on each side. Opt for the Gillette5, a pick that gives you total control and a super smooth shave.

Gillette[®]5

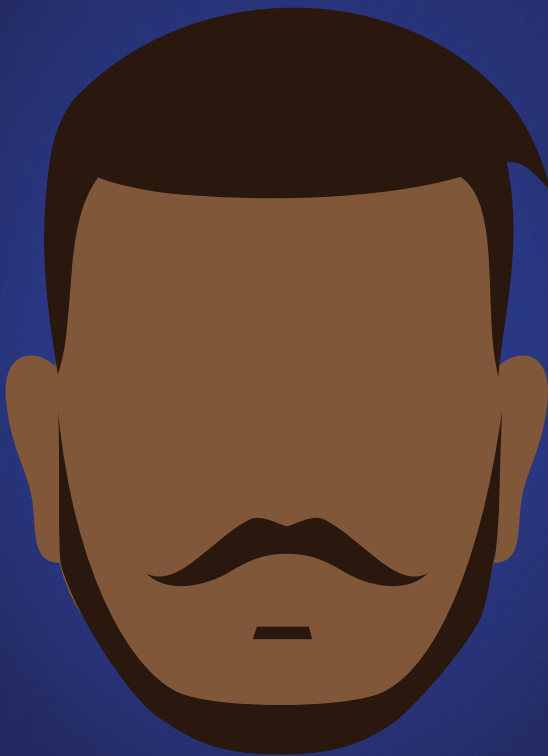


THE CIRCLE BEARD LOOK



To get a firm grip on this well-rounded look, consider using the Gillette3. With the complete control of the Aqua Grip handle, you'll be an expert at maintaining the beard's circular shape in no time. Plus, you won't have to worry about your hand slipping – especially if you prefer to shave in the shower.

Gillette[®]3

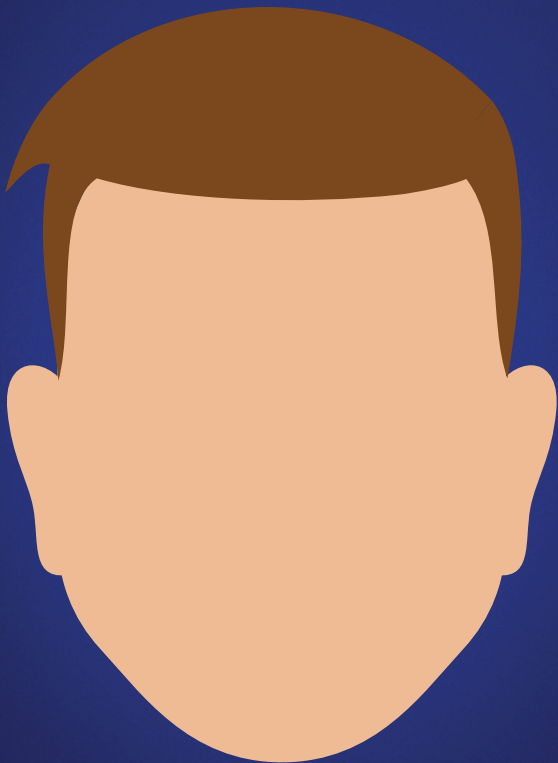


THE DISCONNECTED MUSTACHE LOOK



If you're looking to feature the hair on your jaw, upper lip and chin – but keep it all separate and distinct – this is your look. The Gillette Fusion5 delivers with every shave. The trimmer's precision edge action helps you get into tight spaces and keep those sections separate.

FUSION5™

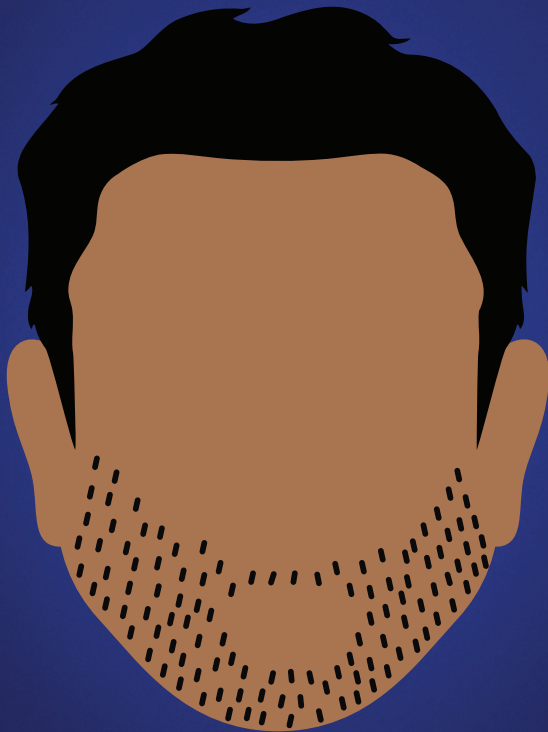


THE CLEAN-SHAVEN CONVENIENCE LOOK



If you're a guy who wants convenience in any situation, but are committed to the up-keep of a classically clean-shaven face, the MACH3 is the way to go. The Low Cutting Force blades help deliver a smoother shave time after time.

MACH3[®]



THE UNKEMPT COOL LOOK



Let's be clear – there's nothing wrong with embracing that five o'clock shadow, so long as it's being well-kept and groomed. With the Gillette Fusion5 ProGlide, you can achieve this look with minimal effort. The Precision Trimmer is great for those hard-to-reach areas and helps define the shape of your beard-line with sharp edges.

FUSION5™
PROGLIDE



THE CLASSIC GOATEE LOOK



If you prefer to rock the goatee, keep it groomed low with the Gillette3. The Aqua Grip handle allows for total control – great for those who shave in the shower. The front-pivot head helps transfer pressure from your hand away from the skin during the shave, helping you shape your goatee in comfort.

Gillette[®]3



THE CHIN BEARD LOOK



This simple yet stylish look can be all yours with the Gillette STYLER, fully removing the mustache and perfectly grooming your chin beard. With the STYLER you can easily trim and shave the mustache with any Gillette Fusion5 cartridge. Once complete, finish off the job by using the Precision Trimmer to create the crisp and defined lines around your chin.

Gillette[®]
STYLER[®]



THE 'STACHE + STUBBLE LOOK



Undecided on whether you should commit to the beard or the goatee? Maybe this is the look for you. To perfect it, you'll need to trim and even out your beard hair, and then clean up the edges and sides with a Sensor3 Cool. The convenience of this disposable will have you ready and out the door in no time.

Sensor3
COOL

Gillette[®]