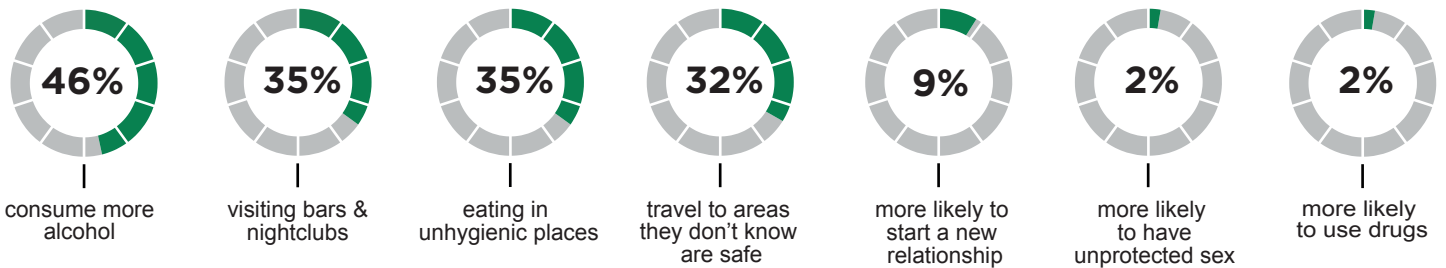


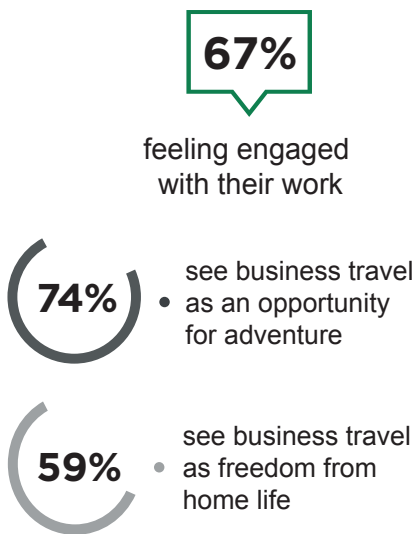
KEEPING INTERNATIONAL BUSINESS TRAVELLERS HEALTHY, HAPPY AND ENGAGED AT HOME AND AWAY

34% of IBTs are more likely to engage in a number of **RISKY BEHAVIOURS** when travelling on business

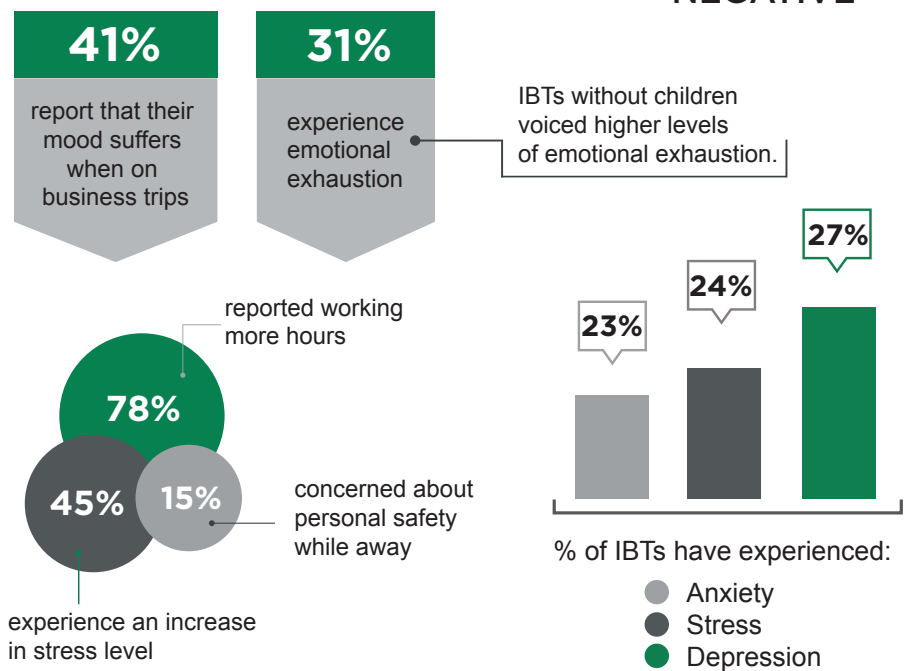


EMOTIONAL OUTCOMES

POSITIVE



NEGATIVE



PHYSICAL HEALTH IMPACT



WORK/LIFE BALANCE

