

LE PETIT THÉÂTRE DE LA FONDATION IPSEN PRESENTS



DON'T LEAVE ME NOW

NOVEMBER 21ST, 4 PM

FREE ADMISSION

A play about how Dementia
or Alzheimer's disease impacts family life

Written by

BRIAN DANIELS

Directed by

JENI DRAPER

With

BRIAN DANIELS, ALEXA EDELIST, SHENAGH
GOVAN, GILL MCVEY AND SOPHIE TURNER

Performance in english

REGISTRATION:

www.fondation-ipsen.org



FONDATION
IPSEN

Science for
People

Location:

65 quai George Gorse, Boulogne-Billancourt



ABOUT THE PROJECT

Our “**Science for People**” program is composed of accessible meetings and webinars to provide access to science to the largest audience.

Brian Daniels’ play “Don’t leave me now” is about caregivers of people with Alzheimer’s Disease or dementia

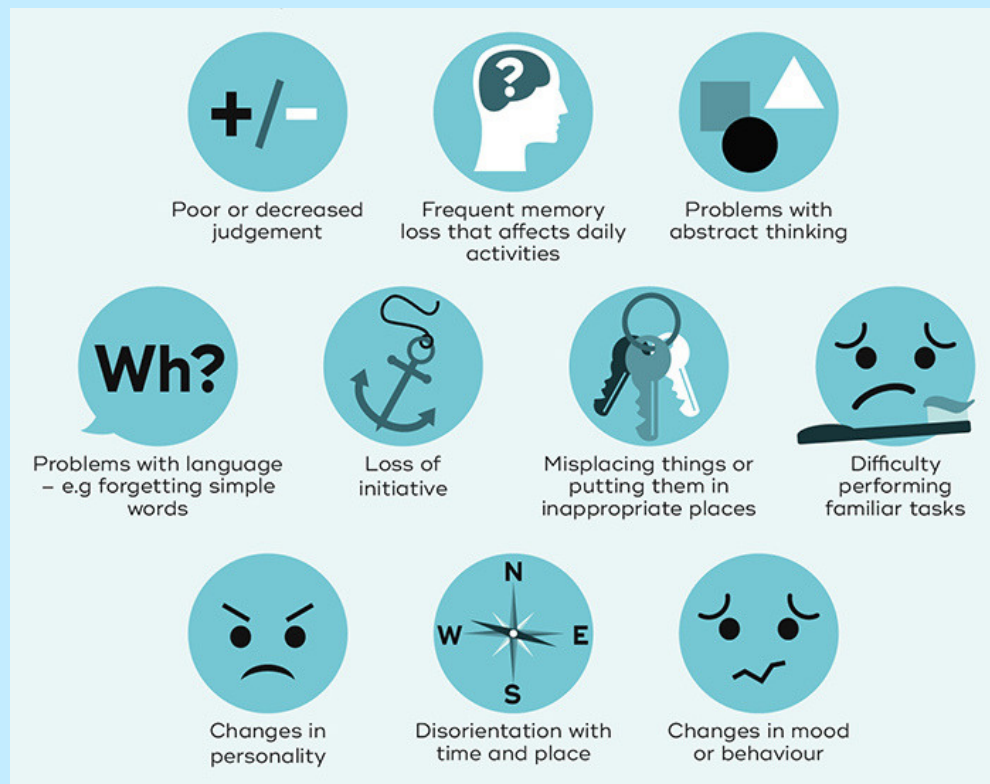
ABOUT DEMENTIA

Dementia is a syndrome – usually of a chronic or progressive nature – which deteriorates cognitive function (i.e. the ability to process thought) beyond what might be expected from normal ageing. It affects memory, thinking, orientation, comprehension, calculation, learning capacity, language, and judgement. Consciousness is not affected. The impairment in cognitive function is commonly accompanied, and occasionally preceeded, by deterioration in emotional control, social behaviour, or motivation.

Dementia results from a variety of diseases and injuries that primarily or secondarily affect the brain, such as **Alzheimer's disease** or stroke.

Dementia is one of the major causes of disability and dependency among older people worldwide. It is overwhelming not only for the people who have it, but also for their carers and families. There is often a lack of awareness and understanding of dementia, resulting in stigmatization and barriers to diagnosis and care. The impact of dementia on carers, family and societies can be physical, psychological, social and economic.

Recognize the first signs



Sources: World Health Organization and the University of Queensland (Australia)

ABOUT "DON'T LEAVE ME NOW"



"Don't Leave Me Now" written by playwright Brian Daniels and inspired by two real stories, explores with insight and humour the impact of early onset dementia on family life. Where does love end and duty begin? or does it?

"Don't Leave Me Now" is endorsed by all major Dementia Charities including Dementia UK, The Alzheimer's Society, Dementia Pathfinders, Cruse Bereavement Care, Hospice UK (formerly the National Council for Palliative Care).

The play has been widely performed throughout the UK and Northern Ireland in theatres, hospitals, hospices, community centres, libraries, care homes, churches, mosques, synagogues, universities and schools. The play has been seen in the UK Parliament.

Don't Leave Me Now is a valuable educational tool and resource for in-house staff awareness training.

ABOUT BRIAN DANIELS



Brian Daniels is a U.K. playwright, producer and actor/manager. He was Artistic Director of Off-West End Theatres for 14 years. He has written 12 plays including the award winning 'Homeward Bound' and 'The Good and the True'. He has performed for the

'She' Festival in Tel Aviv and in Eva Hoffman's acclaimed play 'The Ceremony'. He has performed the role of 'Chris' in the hugely successful play 'Don't Leave Me Now' more than 150 times and he appears in his new play 'Fighting For Life' which have its London premiere in January 2018.

ABOUT THE CREW

DIRECTOR



JENI DRAPER

CASTING



BRIAN DANIELS



SHENAGH GOVAN



ALEXA EDELSTEIN



GILL MCVEY



SOPHIE TURNER

ABOUT THE FONDATION IPSEN

Established in 1983 under the aegis of the Fondation de France, Fondation IPSEN seeks to promote interactions between specialists in different fields of research, and to spread Science to people.



FONDATION
IPSEN

**Science for
People**

www.fondation-ipsen.org



65 quai George Gorse
92650, Boulogne-Billancourt

CONTACT



Dr. Yannick TANGUY
Scientific Communication, Fondation IPSEN
yannick.tanguy@ipsen.com
+33 1 58 33 59 46
+33 6 81 18 78 60

