

CareSelect™ Open Access

Equip providers without integrated decision support to consult AUC and drive quality improvement

CareSelect Open Access enables widespread access to the tools needed for compliance with the the Protecting Access to Medicare Act (PAMA).

A Web Portal Consultation

The standalone web portal ensures that all providers are able to consult a compliant Clinical Decision Support Mechanism for the ordering of advanced imaging to meet PAMA requirements.

The portal is easy to access and use and is open to all ordering providers at no cost.

Create a Pathway to Compliance

Effective January 1, 2020, the Protecting Access to Medicare Act (PAMA) requires providers to consult Appropriate Use Criteria (AUC), authored by qualified provider-led entities (qPLE), through a qualified Clinical Decision Support Mechanism (CDSM) for all advanced imaging ordered under Medicare Part B.

CareSelect Open Access is fully qualified by CMS as a CDSM and generates the consultation session and data you need to be compliant.

Educate and Enroll your External Providers

Change Healthcare's Provider Engagement Services program for PAMA works with CareSelect Open Access to educate your external providers about PAMA and enable pathways to enroll and encourage participation with the Open Access portal.

Leveraging your lists of external ordering providers, Change Healthcare provides outreach and registration services to maximize engagement and compliance with your referring provider base.

Rely on Society Authored Criteria

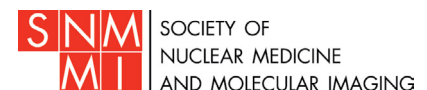
We partner with CMS-qualified, provider-led entities including the American College of Radiology, the American College of Cardiology, and the National Comprehensive Cancer Network.

These comprehensive sets of interventions ensure that criteria are available to leverage against your local practice imperatives including all Priority Clinical Areas outlined by CMS.

The Impact of High-Value Imaging

The results of implementing CareSelect Imaging have been published in case studies and journals:

- In a randomized controlled trial, Aurora Health used CareSelect Imaging to reduce targeted imaging orders by a statistically significant 6%.¹
- The University of Virginia used CareSelect Imaging to reduce the relative frequency of low-utility studies from 11% to 5.4%. The university also increased the relative frequency of indicated studies from 64.5% to 82%.²
- Using a CareSelect Imaging sub-routine, Einstein Healthcare improved adherence to Pediatric Emergency Care Applied Research Network (PECARN) guidelines to more than 79%.³



AMERICAN COLLEGE of CARDIOLOGY

National Comprehensive Cancer Network™



CareSelect™ Open Access Consultation

CareSelect™ [Consult CDS](#) [Search My CDS Consultations](#) [User Guide](#) [FAQ](#) Sign Out

36 year old Female Edit

Service:
CT HEAD/BRAIN W WO CONTRAST Edit

Indication(s):
Headache, chronic, with new features Edit

Appropriateness rankings for a 36 year old Female Cancel CDS Consult

Appropriateness	Service	Cost	RRL	Display Evidence...
5	CT HEAD/BRAIN W WO CONTRAST	\$\$	⚠⚠⚠⚠	Select this service
8	MR HEAD/BRAIN (ALL CONTRASTS)	\$\$\$		Select this service
8	MR HEAD/BRAIN W CONTRAST	\$\$\$		Select this service
8	MR HEAD/BRAIN W WO CONTRAST	\$\$\$		Select this service
7	CT HEAD/BRAIN (ALL CONTRASTS)	\$\$	⚠⚠⚠	Select this service
7	CT HEAD/BRAIN WO CONTRAST	\$\$	⚠⚠⚠	Select this service
7	MR HEAD/BRAIN WO CONTRAST	\$\$		Select this service

Complement Your Ordering Workflows

- **Consult criteria through an easy to access web portal** — Place an advanced imaging order in CareSelect Open Access to validate the appropriateness of the order against the latest clinical standards.
- **Deliver actionable feedback in the ordering workflow** — Providers receive an Appropriateness Score (1-9) based on their order and if applicable, are presented with alternative exam choices.
- **Transmit AUC consultation information downstream** — Consultation data is generated for the ordering provider to send downstream for compliance and billing.

1. Joseph Doyle, "Clinical Decision Support for High-Cost Imaging: A Randomized Clinical Trial." PLOS ONE, March 15, 2019. <https://journals.plos.org/plosone/article?id=10.1371/journal.pone.0213373>

2. Timothy C. Huber, et al. "Impact of a Commercially Available Clinical Decision Support Program on Provider Ordering Habits." Journal of the American College of Radiology, Volume 15, Issue 7, Pages 951-957. July 2018. [https://www.jacr.org/article/S1546-1440\(18\)30387-9/abstract](https://www.jacr.org/article/S1546-1440(18)30387-9/abstract)

3. Linda G. Sowers, "Case Study: Ahead of the Curve." The American College of Radiology, March 2018. https://www.acr.org/-/media/ACR/Files/Case-Studies/IT/AheadoftheCurve/Imaging3_AheadoftheCurve_March2018