



SafePath[®] IOT

**CONTROL THE ENTIRE CONNECTED
DEVICE ECOSYSTEM**



CONNECTIVITY MANAGEMENT PLATFORM

SafePath provides **smart, secure, and efficient** onboarding of **IoT devices**, enabling fast market launches.



GPS Trackers

Track nearly ANYTHING! Collect real-time location information for kids, pets, bikes, bags and everything that is valuable to consumers.



Children's Wearables

Keep children safe with a wearable designed to deliver the safety benefits of a smartphone, but with none of the risks for young children.



Elderly Devices

Ensure safety and peace of mind for seniors with a comprehensive solution for aging independently that offers fall detections, vitals monitoring, interactive reminders, and more!



Pet Lifestyle

Keep furry friends safe, active, and healthy with wearables designed specifically to monitor location, activity, and health information of pets.



IOT SERVICES

SafePath IoT Includes the Following Services*

Real-Time Tracking

Locate family members, pets, and valuables in real time as they move to different locations.

Safety Areas & Automatic Notifications

Create virtual fences around areas you designate and receive automatic notifications when an IoT device enters or exits the area.

Monthly Reports

Access monthly activity history, app highlights, parenting tips, and more with SafePath's reporting tools.

Activity History & Timeline

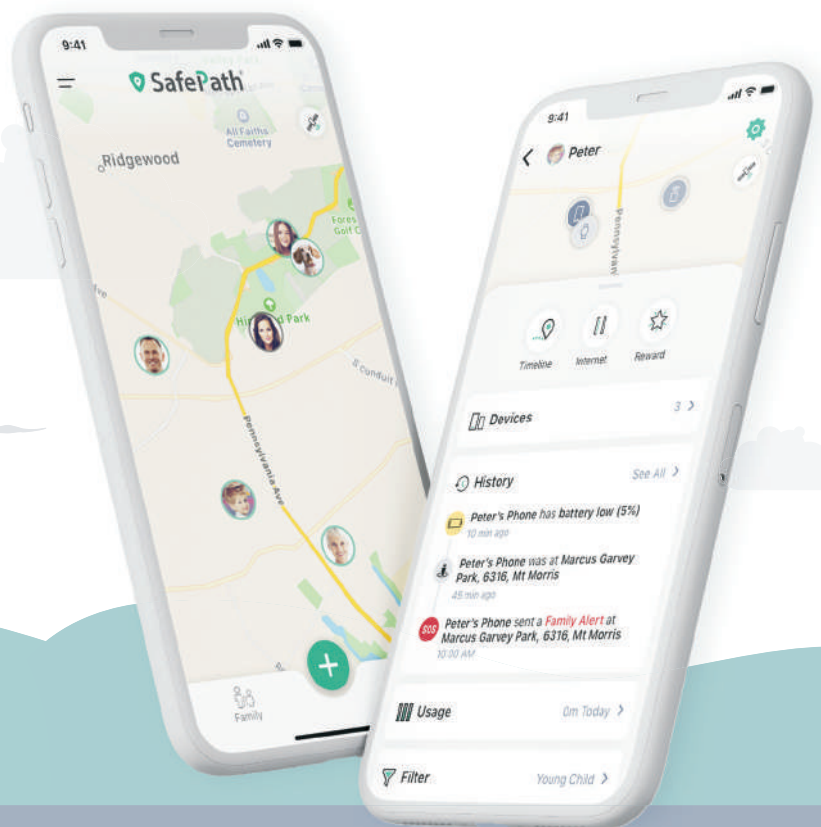
Safeguard your family members and valuables by knowing where they have been and the path they took to get there.

Family Alerts

Send emergency alerts with location information from your tracker and wearables to all family members connected to SafePath.

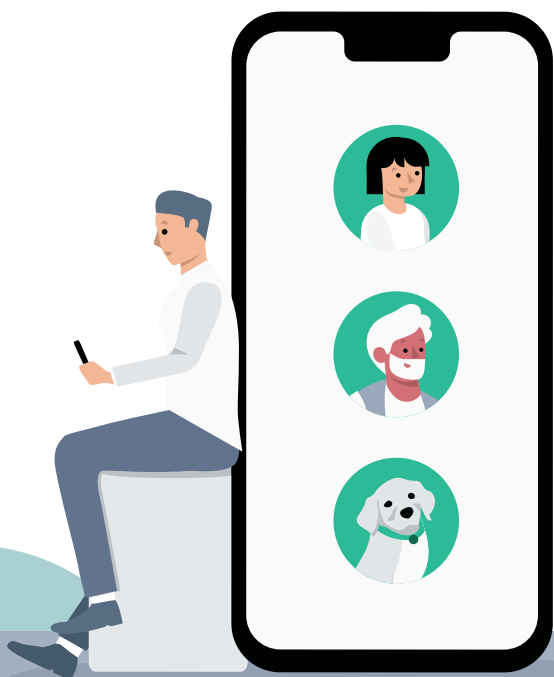
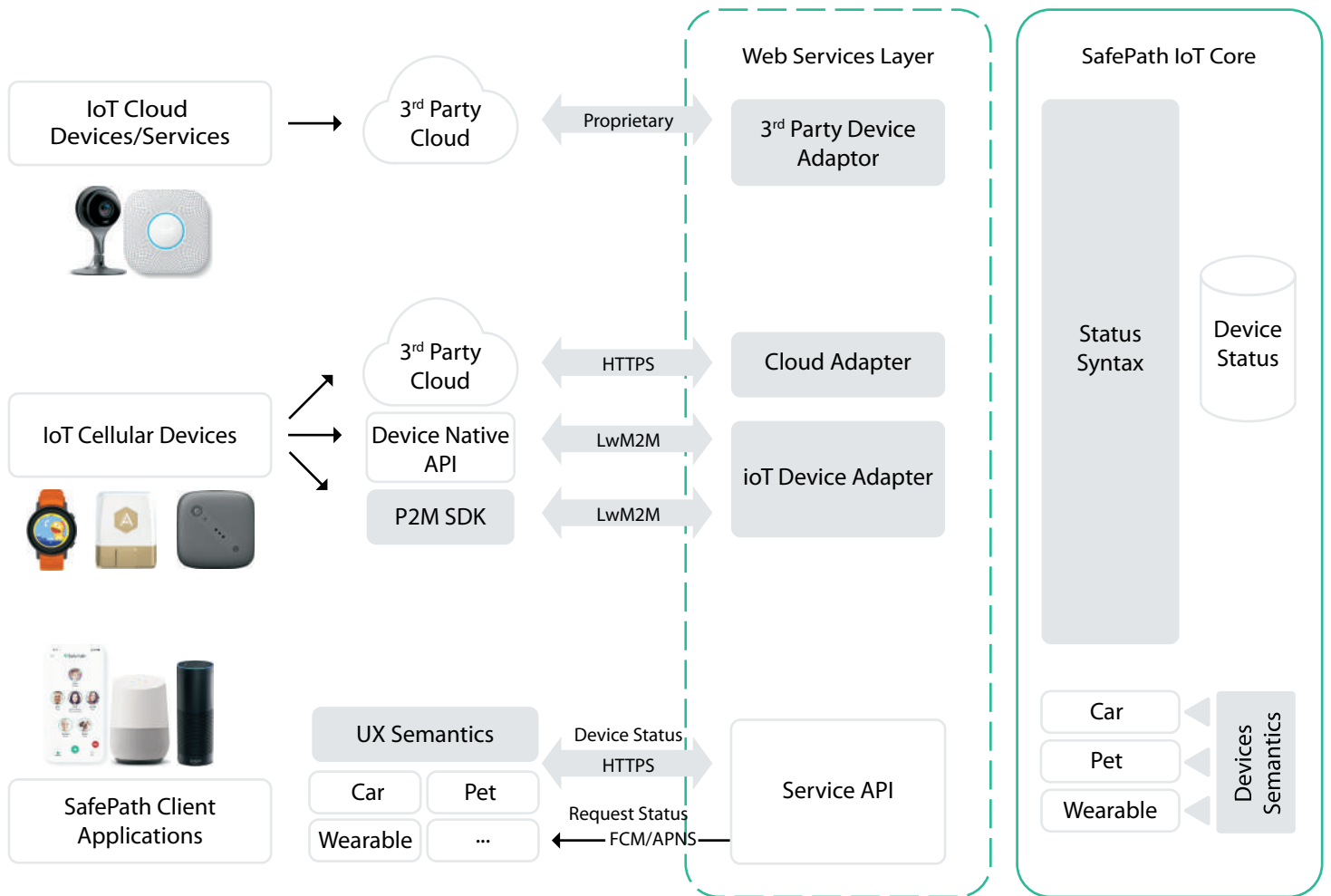
Gamification

Increase app engagement with gamification elements and celebrate good behaviors with rewards.



*services available when applicable

SAFEPATH IOT ARCHITECTURE



SafePath IoT SDK

- Operationally Efficient and Secure
- Standards-Based LwM2M Interface
- Available as Android AOSP and Linux SDK