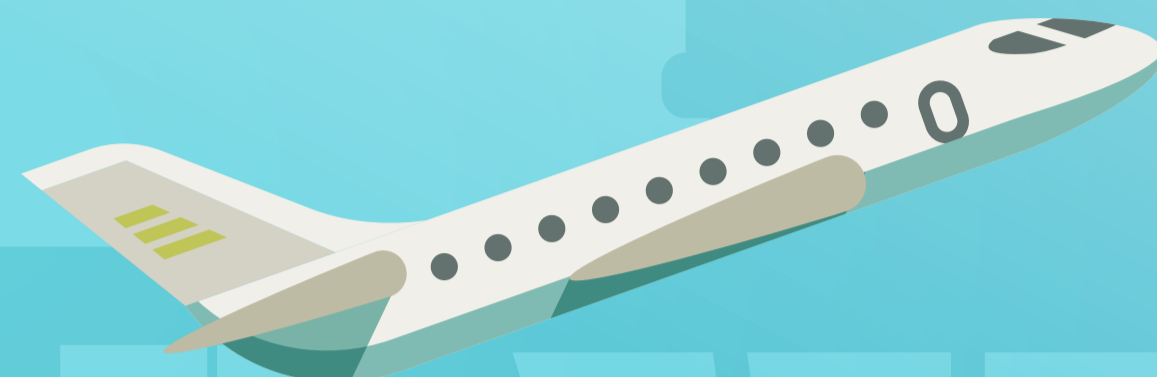


JAPAN DOMESTIC FLIGHTS SCHEDULED FOR RECOVERY IN Q1 2022



83%

cited domestic leisure as reason for travel

93%

domestic flights could reach 93% of pre-pandemic levels by Q1 2022

80%

plan to travel within the next 12 months

78%

intend to get back to the skies

TOP REGIONS AND DESTINATIONS



TOP DOMESTIC DESTINATIONS

TOP INTERNATIONAL REGIONS

01	SAPPORO	01	EUROPE
02	OKINAWA	02	AUSTRALIA/NEW ZEALAND
03	TOKYO	03	SOUTH EAST ASIA
04	FUKUOKA	04	NORTH AMERICA
05	OSAKA	05	EAST ASIA

“The challenge is for airlines to make travelers feel safe about air travel and provide attractive and targeted offers to Japanese holiday makers to encourage travel.”

Jeremy Bowen, CEO at Cirium

Top airline choices: All Nippon Airways - Japan Airlines - Peach Aviation - Skymark Airlines

THE TOP THREE HYGIENE MEASURES THAT COULD INFLUENCE AIRLINE CHOICE

