

# A DIFFERENT WAY TO TREAT PLAQUE PSORIASIS:

## ABOUT PLAQUE PSORIASIS

### IMPACTING



~8 MILLION PEOPLE IN THE U.S.

and 125 MILLION PEOPLE WORLDWIDE



Psoriasis is a complex and chronic inflammatory disease caused by dysfunction of the immune system.<sup>1,2</sup>

10% 20% 30% 40% 50% 60% 70% **80-90%**



The most common form of psoriasis is plaque psoriasis, which affects about **80-90%** of people with psoriasis and is characterized by raised patches of skin, often with silvery scales that can be itchy, painful, and potentially disfiguring.<sup>2,3</sup>

## ABOUT VTAMA® (TAPINAROF) CREAM, 1%

### VTAMA CREAM

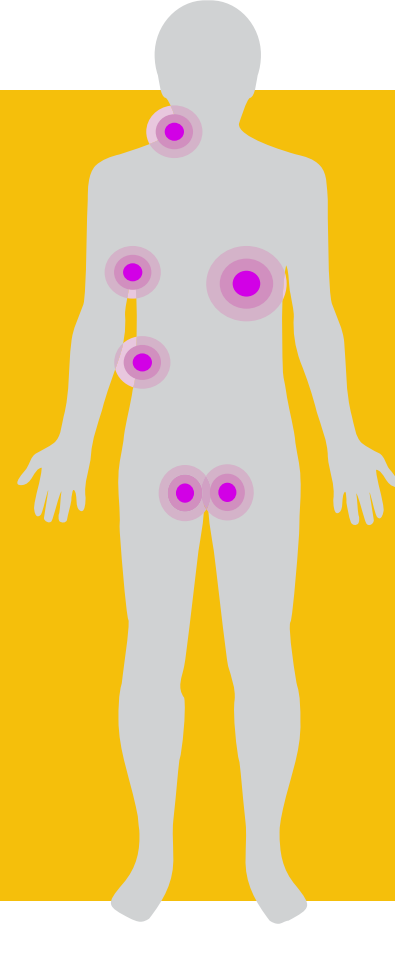
is a prescription medicine used once daily to treat plaque psoriasis in adults.<sup>4</sup> It is the first and only FDA-approved steroid-free topical medication in its class.

### VTAMA CREAM

contains tapinarof as the active ingredient. Tapinarof is an aryl hydrocarbon receptor (AhR) agonist. The specific mechanisms by which VTAMA cream exerts its therapeutic action in psoriasis patients are unknown.<sup>4</sup>

### VTAMA CREAM

is backed by extensive data from the pivotal Phase 3 clinical trial program comprised of PSOARING 1 and PSOARING 2.<sup>5</sup> A long-term, open-label extension study, PSOARING 3, demonstrated consistent results seen in PSOARING 1 and PSOARING 2, supporting its favorable efficacy and safety profile — even with long-term use up to 52 weeks and on sensitive and difficult-to-treat areas, such as the face, groin, and underarms.<sup>5,6</sup>

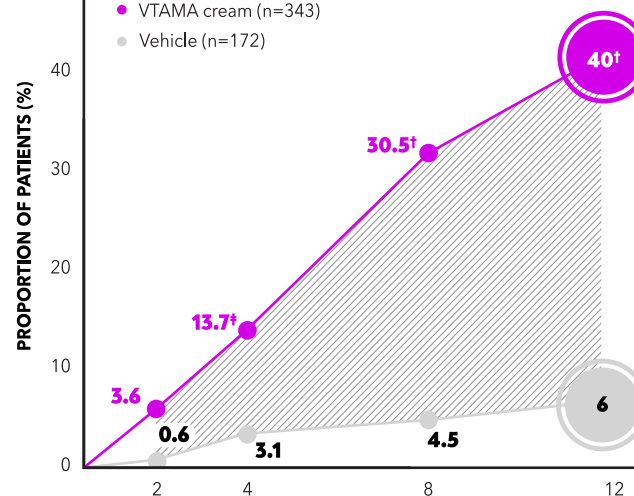
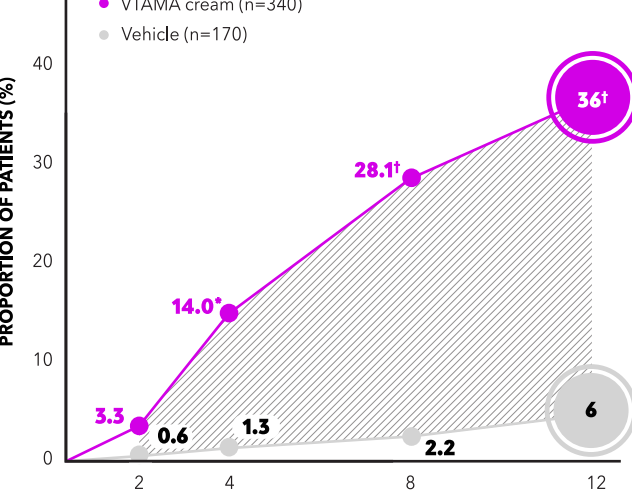


## CLINICAL TRIAL DATA

PSOARING 1 and PSOARING 2, which enrolled 1,025 patients in total, were identical, multi-center, randomized (2:1), vehicle-controlled, double-blind, parallel group studies that evaluated the efficacy and safety of VTAMA cream dosed once daily versus vehicle for 12 weeks.<sup>5</sup>

The primary endpoint in both PSOARING 1 and PSOARING 2 was the proportion of patients who achieved treatment success — defined as a Physicians Global Assessment (PGA) score of clear (0) or almost clear (1) and at least a 2-grade improvement at week 12 from baseline.<sup>5</sup>

**PGA treatment success: PGA score of 0 or 1 and ≥ 2-grade improvement at week 12 from baseline<sup>5</sup>**



Doctors often use assessment tools such as PGA to evaluate patient response to treatment. PGA is a measurement of the clinical signs of psoriasis, such as thickness of the psoriasis plaque, redness, and scaling, with score assignments (grades) of clear (0), almost clear (1), mild (2), moderate (3) and severe (4).<sup>7</sup>



## Treatment success



**36%** of patients achieved treatment success in PSOARING 1 compared with 6% for patients using vehicle<sup>5</sup>

**40%** of patients achieved treatment success in PSOARING 2 compared with 6% for patients using vehicle<sup>5</sup>



In PSOARING 3, patients who achieved complete disease clearance (PGA=0) and then stopped using VTAMA cream maintained clear (PGA=0) or almost clear (PGA=1) skin for a median time of approximately four months.<sup>6</sup>

### The most common side effects (incidence ≥ 1%) of VTAMA cream include:<sup>4</sup>

- ▶ folliculitis (red raised bumps around the hair pores)
- ▶ nasopharyngitis (pain or swelling in the nose and throat)
- ▶ contact dermatitis (skin rash or irritation, including itching and redness, peeling, burning, or stinging)
- ▶ headache
- ▶ pruritus (itching)
- ▶ influenza (flu)

# WE ARE ALL IN ON SKIN

Dermavant Sciences, a subsidiary of Roivant Sciences, is a biopharmaceutical company committed to fostering unprecedented change and unparalleled impact in immuno-dermatology. Our mission is to make healthier skin a reality for the millions of people around the world living with chronic skin conditions. That's why we're here at work developing new therapies that deliver groundbreaking science exactly where patients need it — **THEIR SKIN.**

Because skin is more than superficial — it's where we live every moment of every day.

## IMPORTANT SAFETY INFORMATION

**Indication:** VTAMA® (tapinarof) cream, 1% is an aryl hydrocarbon receptor agonist indicated for the topical treatment of plaque psoriasis in adults. **Adverse Events:**

The most common adverse reactions (incidence ≥ 1%) in subjects treated with VTAMA cream were folliculitis (red raised bumps around the hair pores), nasopharyngitis (pain or swelling in the nose and throat), contact dermatitis (skin rash or irritation, including itching and redness, peeling, burning, or stinging), headache, pruritus (itching), and influenza (flu).

**You are encouraged to report side effects of prescription drugs to the FDA.**

Visit [FDA.gov/medwatch](https://www.fda.gov/medwatch) or call 1-800-FDA-1088 or report side effects to Dermavant Sciences at 1-8 DERMAVANT (1-833-762-8268).

## REFERENCES

- 1 National Psoriasis Foundation. Psoriasis statistics. Available at: <https://www.psoriasis.org/psoriasis-statistics/>. Accessed May 23, 2022.
- 2 National Psoriasis Foundation. About Psoriasis. Available at: <https://www.psoriasis.org/about-psoriasis/>. Accessed May 23, 2022.
- 3 Menter A, Gottlieb A, Prater SR, et al. Guidelines of care for the management of psoriasis and psoriatic arthritis. *J Am Acad Dermatol*. 2008;58(5):826-850.
- 4 VTAMA® (tapinarof) cream prescribing information, Dermavant Sciences.
- 5 Lebwohl M, et al. *N Engl J Med*. 2021;385:2219-2229.
- 6 Strober B, et al. Poster presentation at the Innovations in Dermatology 2021, Mar 16-20, 2021.
- 7 Elmetts CA, Korman NJ, Prater EF, et al. Joint AAD-NPF Guidelines of care for the management and treatment of psoriasis with topical therapy and alternative medicine modalities for psoriasis severity measures. *J Am Acad Dermatol*. 2021; 84:432-70.