

Exscientia 1H 2022 Business Update

CASH AND CASH EQUIVALENTS

OPERATING CASH FLOW

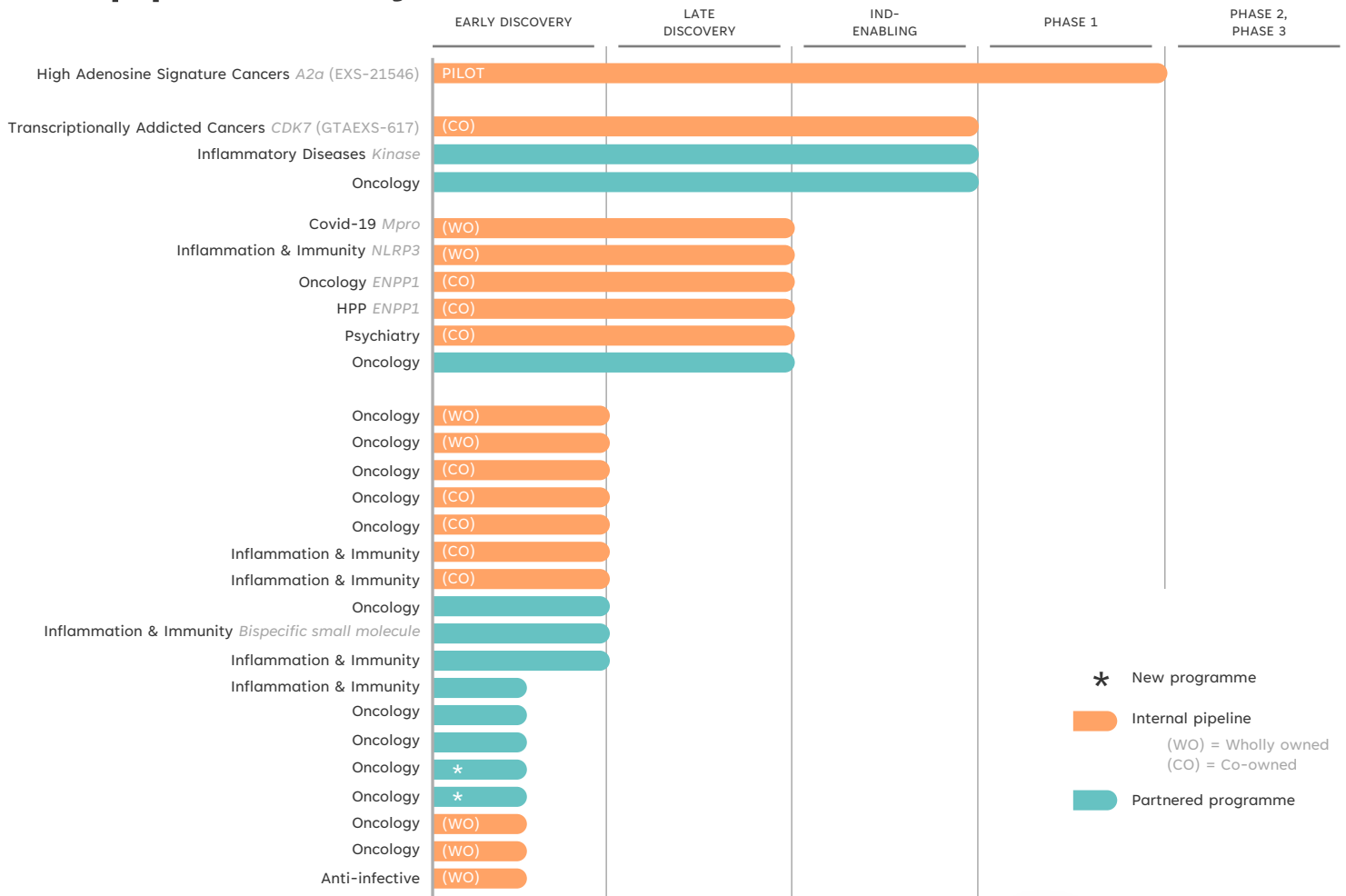
Cash and cash equivalents
as of June 30, 2022:
\$732.0 million*

Cash inflows from
collaborations in 1H 2022:
\$117.3 million

1H 22 net cash inflows
from operations:
\$63.3 million

USD values based on constant currency, *includes fixed term bank deposits

Our pipeline today



Creating a consistent flow of high-quality targets

Integrated capabilities drive new discoveries

>35%

of pipeline generated using
Exscientia target ID platforms

AI
CENTAUR BIOLOGIST®



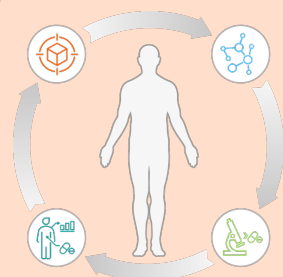
Applies deep learning to genome-scale datasets to identify connections and predict target-disease associations
Global knowledge graphs

Experimental
XCELLOMICS™

Launched 2022, open-source programme in collaboration with the University of Oxford

Focus on phenotypic assays

Experimental + AI
PRECISION MEDICINE



Proprietary human tissue platform
Single cell phenotypic screening to ID novel targets

70%
of oncology targets tested on platform