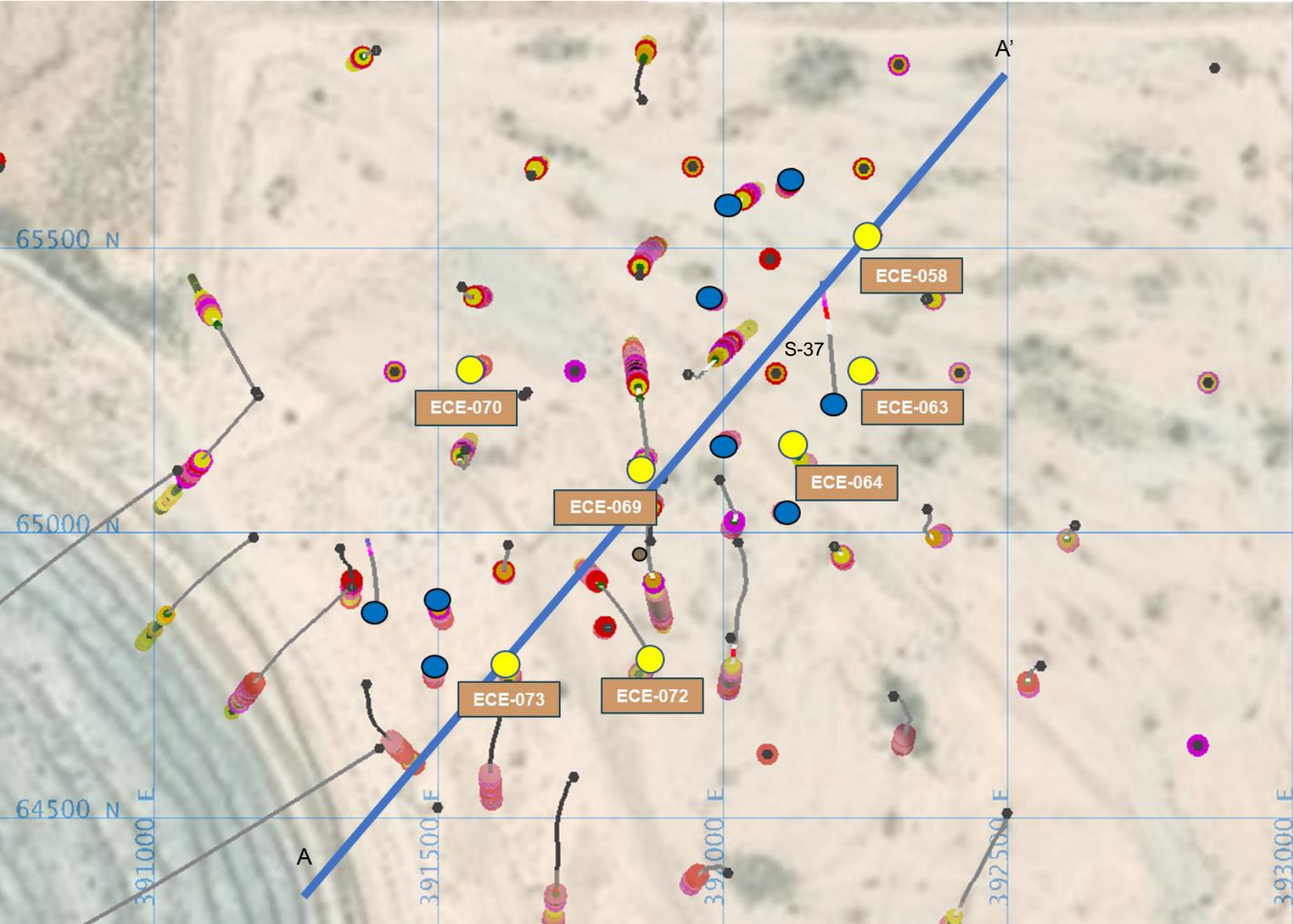




Cactus East Plan View



● August 30 Press Release
● Assays Pending

250 ft (76 m)
 500 ft (152.4 m)

Cactus East Cross Section, Looking Northwest

Press Release dated August 30, 2022



ECE-073

344.0 ft @ 1.07% CuT,
0.82% Cu TSol
Incl. 101.7 ft @ 1.95% CuT,
1.89% Cu TSol

ECE-072

90.9 ft @ 0.78% CuT,
0.74% Cu TSol

270.4 ft @ 1.77% CuT,
1.66% Cu TSol
Incl. 100.0 ft @ 3.45% CuT,
3.36% Cu TSol

ECE-069

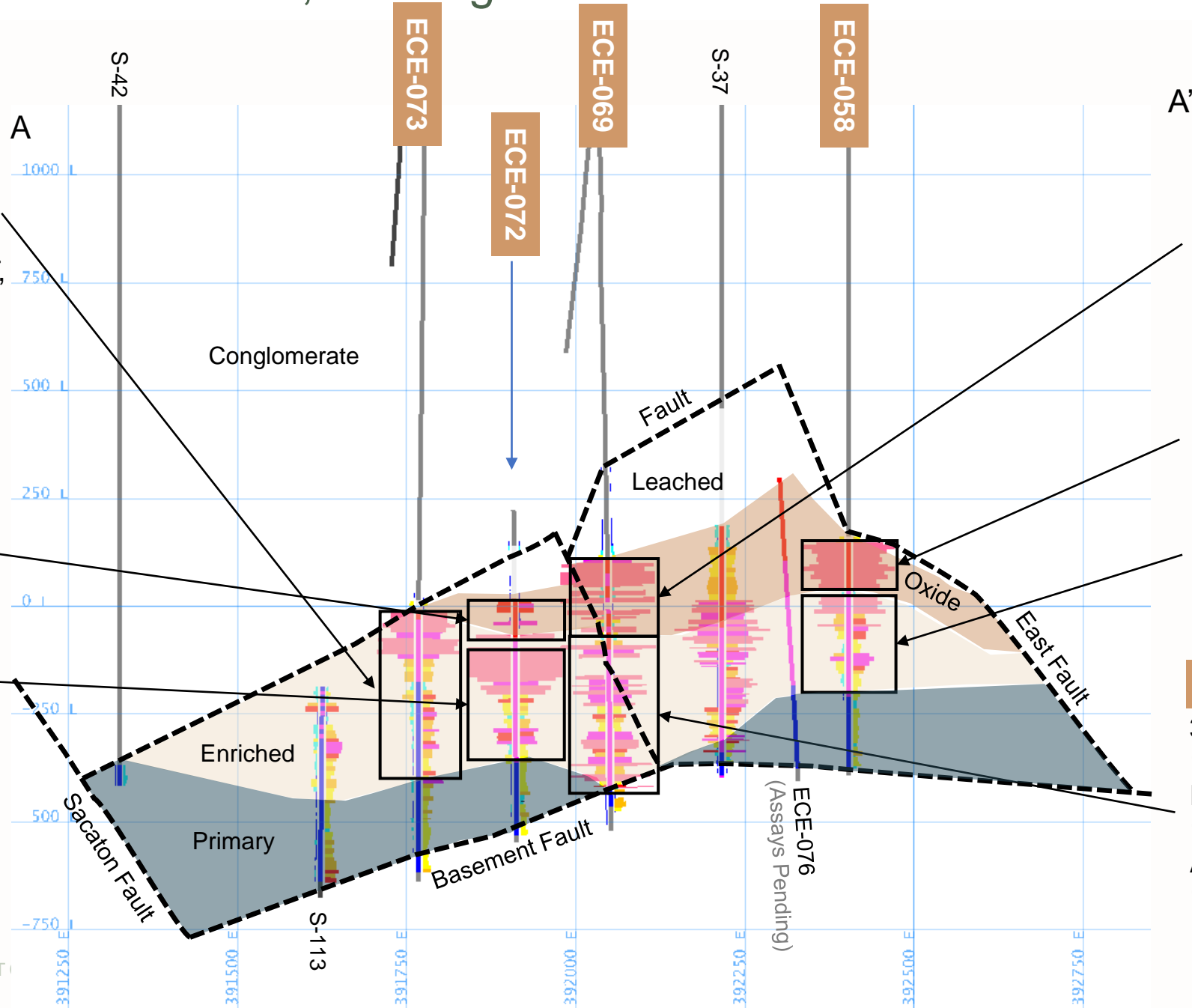
247.0 ft @ 1.73% CuT,
1.63% Cu TSol
Incl. 90.0 ft @ 2.99% CuT,
2.80% Cu TSol

ECE-058

120.0 ft @ 2.01% CuT,
1.96% Cu TSol
210.0 ft @ 1.05% CuT,
0.76% TSol
Incl. 70.0 ft @ 1.56% CuT,
1.42% Cu TSol

ECE-069

388.0 ft @ 1.24% CuT,
1.13% Cu TSol
Incl. 127.0 ft @ 1.91% CuT,
1.72% Cu TSol
And 91.0 ft @ 1.70% CuT,
1.61% Cu TSol





ECE-058 Oxide Copper Mineralization



2.92% TCu
2.91% Cu Tsol

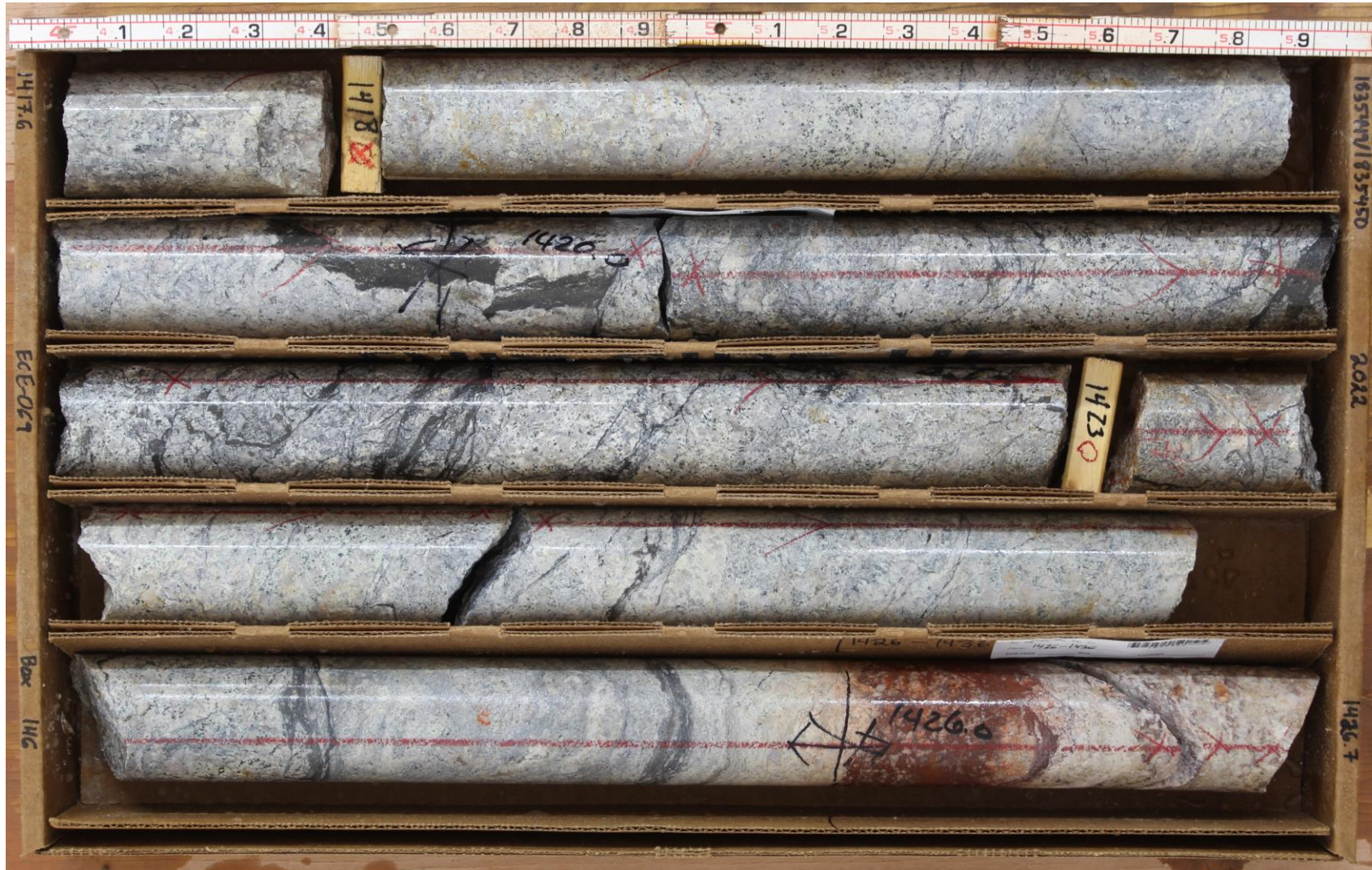
10 ft Interval
1,418 – 1,28 ft
(3.0 m, 432.2 – 435.3 m)

Within:
2.01% TCu
1.96% Cu TSoI

120.0 ft interval
1,348.0 – 1,468.0 ft
(36.6 m, 410.9 – 447.4 m)



ECE-069 Enriched Copper Mineralization



5.71% TCu
4.77% Cu Tsol

6 ft Interval
1,420 – 1,426 ft
(1.8 m, 432.8– 434.6 m)

Within:
1.24% TCu
1.13% Cu TSol

388.0 ft interval
1,400 – 1,788 ft
(118.3 m, 425.7 – 545.0 m)



ECE-072 Enriched Copper Mineralization



4.93% TCu
4.92% Cu Tsol

10 ft Interval
1,660 – 1,670 ft
(3.0 m, 506.0 – 509.0 m)

Within:
1.77% TCu
1.66% Cu TSol

270.4 ft interval
1,600 – 1,870.4 ft
(82.4 m, 487.7 – 570.1 m)



ECE-073 Enriched Copper Mineralization



2.65% TCu
2.56% Cu Tsol

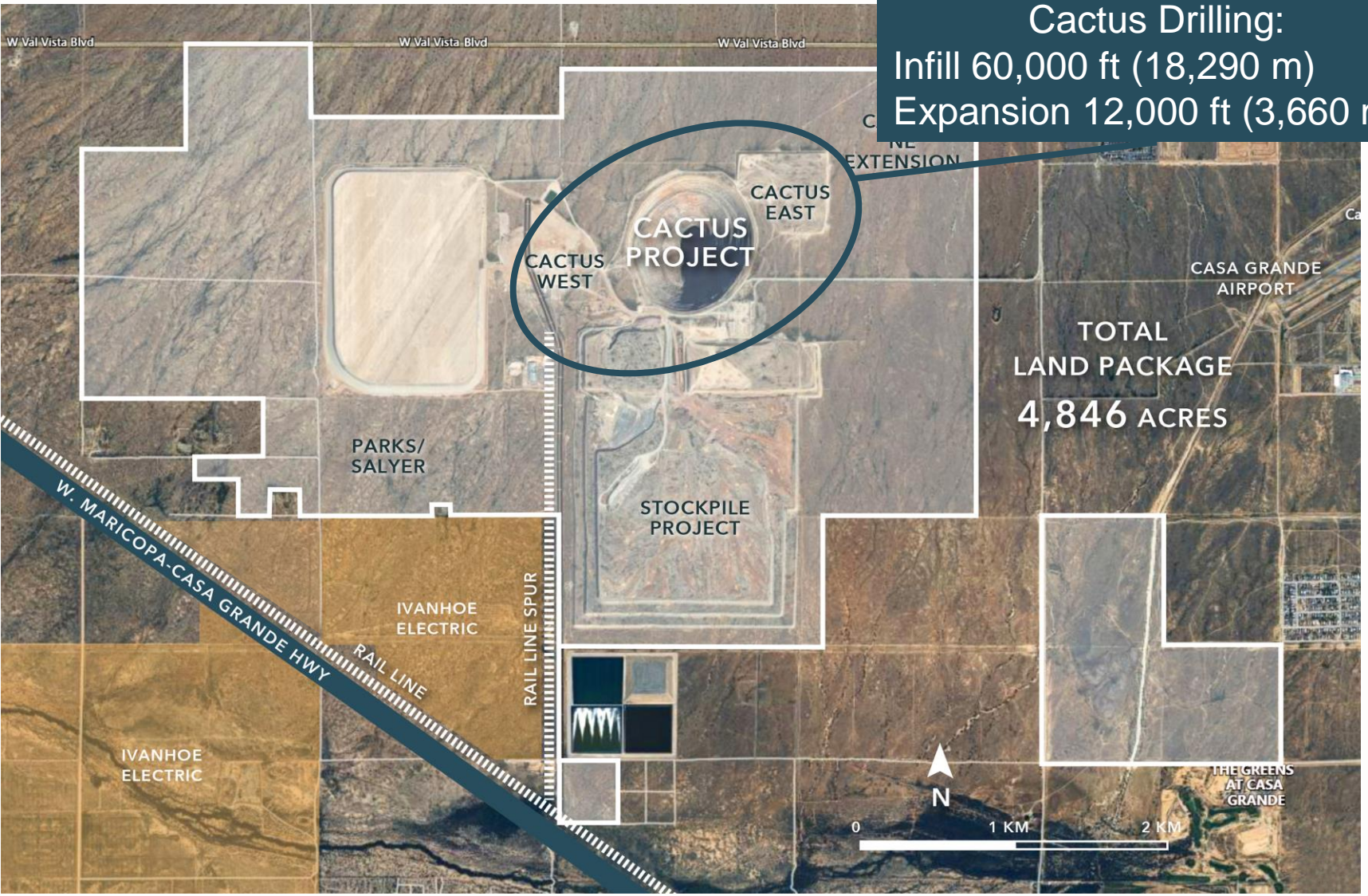
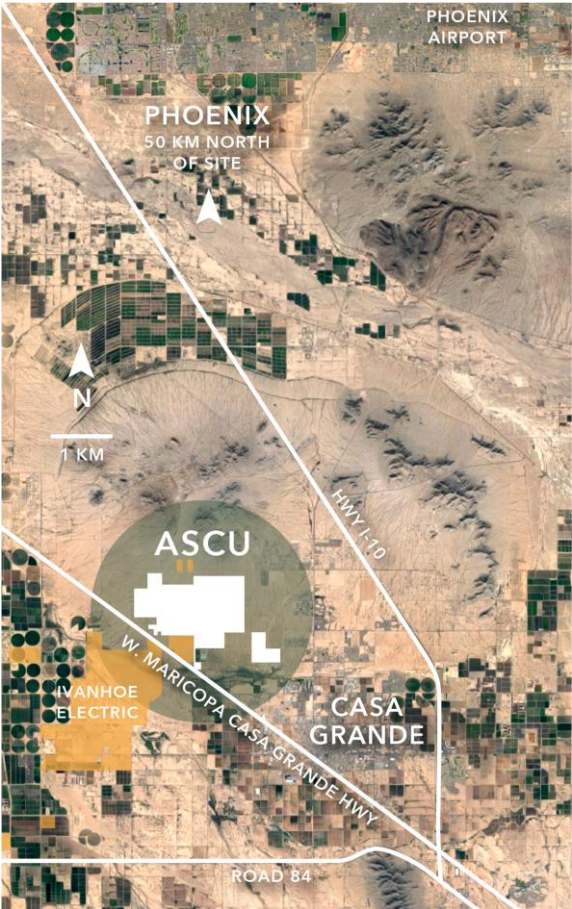
10 ft Interval
1,567 – 1,577 ft
(3.0 m, 477.6 – 480.7 m)

Within:
1.07% TCu
0.82% Cu TSol

344.0 ft interval
1,453.0 – 1,797.0 ft
(104.9 m, 442.9 – 547.7m)



Cactus and Parks/Salyer Project Overview



Cactus Drilling:
 Infill 60,000 ft (18,290 m)
 Expansion 12,000 ft (3,660 m)