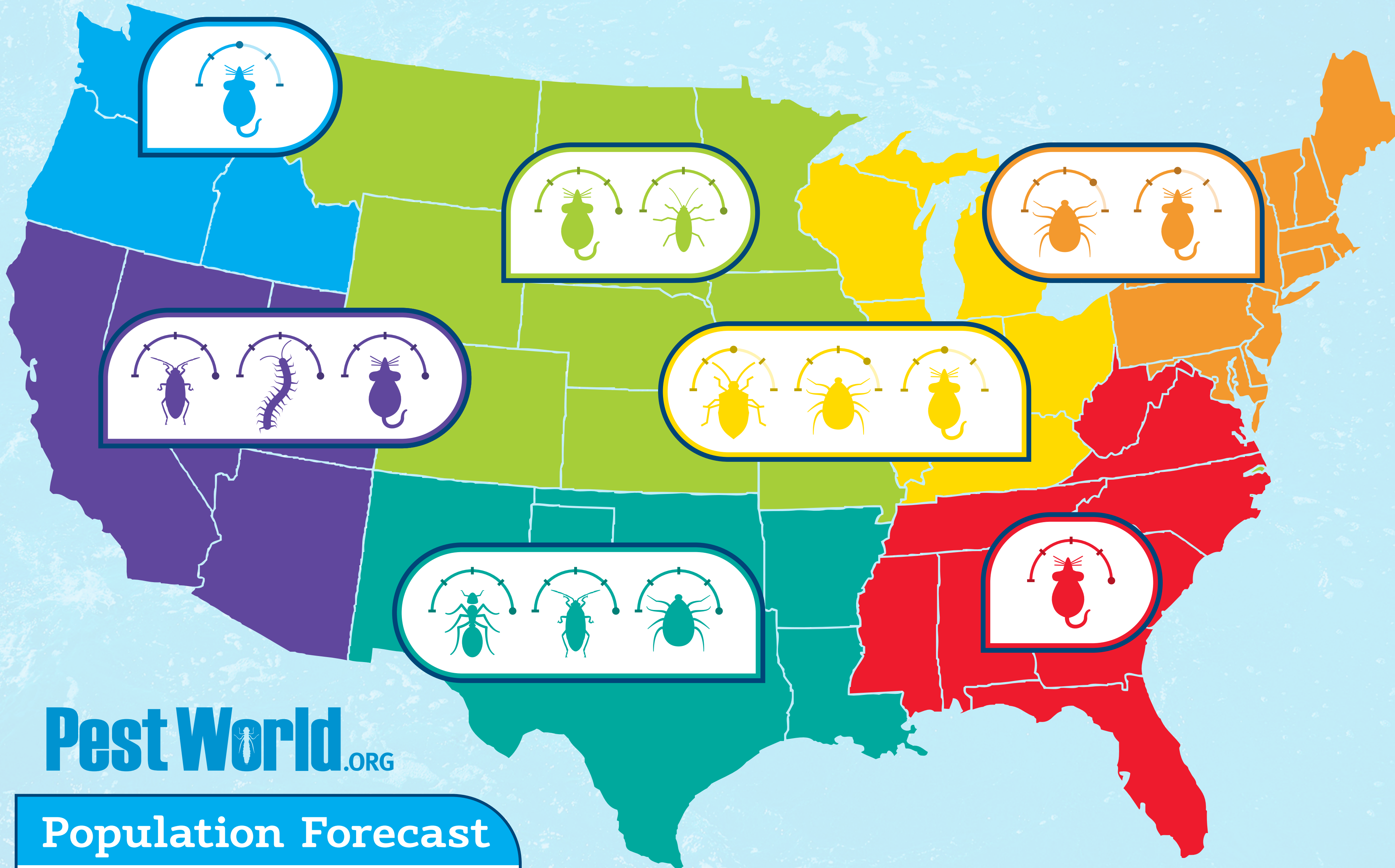


Forecasted by the National Pest Management Association

Fall & Winter 2022

temperatures



PestWorld.ORG

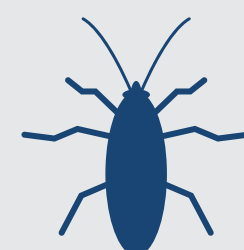
Population Forecast



Pest Key



ANTS



BOXELDER BUGS



CENTIPEDES



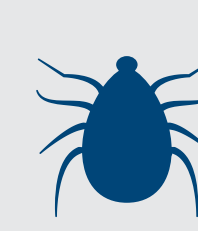
COCKROACHES



RODENTS



STINK BUGS



TICKS

Northeast & New England:

Expect relief from mosquitoes and stinging insects when cooler fall temperatures move into the region. However, average fall temperatures could allow **tick** activity to remain high into the early winter months. Look for **rodents** to begin moving indoors in search of shelter and resources as temperatures continue to drop.

Southeast:

If fall and winter temperatures are colder than average as predicted, expect **rodent** activity to increase sooner than usual as rodents look to find shelter indoors.

Great Lakes, Ohio Valley & Midwest:

Prepare for overwintering pests such as **stink bugs** to begin invading structures as fall temperatures move into the region. Average temperatures and precipitation could also allow **tick** activity to remain high throughout fall. Significantly below-average temperatures predicted this winter will likely drive **rodents** indoors early.

North Central U.S.

Below-average fall temperatures could drive occasional invaders like **boxelder bugs** into structures early in search of shelter. Similarly, prepare for an increase in **mouse** activity sooner if temperatures drop earlier this fall.

South Central U.S.

Warmer-than-average fall temperatures could allow **ant** and **cockroach** activity to persist well into the fall months. This region should also prepare for **tick** activity to remain high until temperatures drop below freezing.

Southwest

If warm fall temperatures persist, expect insects such as **cockroaches** and **centipedes** to remain active well into fall. As cooler temperatures finally settle into the region, prepare for an increase in **rodent** activity.

Northwest

Despite the prediction of a mild winter in this region, expect to see **mouse** activity increase this fall as **rodents** look to homes, sheds, and even vehicles for shelter ahead of winter.