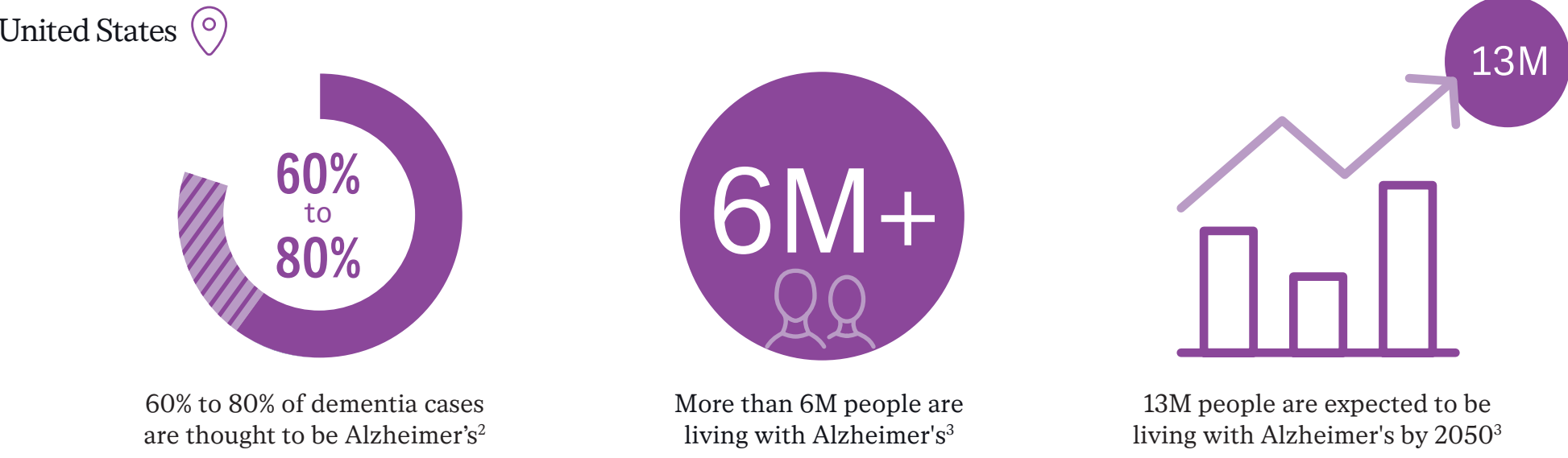


# ALZHEIMER’S DISEASE BY THE NUMBERS

Alzheimer’s is a chronic, progressive brain disease that slowly gets worse over time and affects memory, behavior, problem-solving and daily activities. It is a medical condition and is not a part of normal aging.<sup>1</sup>

## ALZHEIMER’S IS THE MOST PREVALENT FORM OF DEMENTIA<sup>1</sup>



## DIAGNOSIS IS OFTEN DELAYED

Reasons for missed diagnosis or delays include:<sup>3-5</sup>

- Stigma of dementia and fear of diagnosis, lack of awareness
- Difficulty in distinguishing Alzheimer’s from typical age-related changes
- Lack of access to specialist practitioners and equipment



On average it can take two years or more to get a diagnosis of Alzheimer’s<sup>6</sup>



About one-third of people with mild cognitive impairment due to Alzheimer’s disease develop dementia within 5 year years of diagnosis<sup>3</sup>

## THE ECONOMIC IMPACT IS A GROWING GLOBAL HEALTHCARE CHALLENGE

Alzheimer’s disease represents one of the biggest global healthcare crises.



### Direct / tangible costs

Goods and services for which money is exchanged



#### Medical costs:

- Doctor’s visits
- Hospital care
- Medicine
- Specialized aids and equipment



#### Social care and non-medical costs:

- Community and social services such as transportation and non-medicine interventions
- Private and publicly funded home care
- Nursing home accommodation
- Income and welfare support



### Indirect / intangible costs

Resources lost or invested for which no money is exchanged

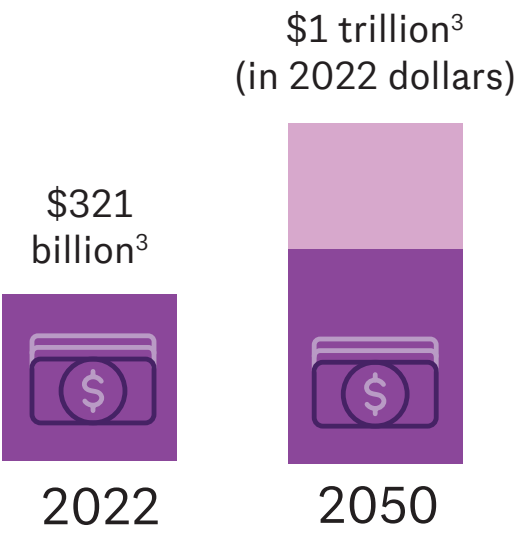


#### Care and non-medical costs:

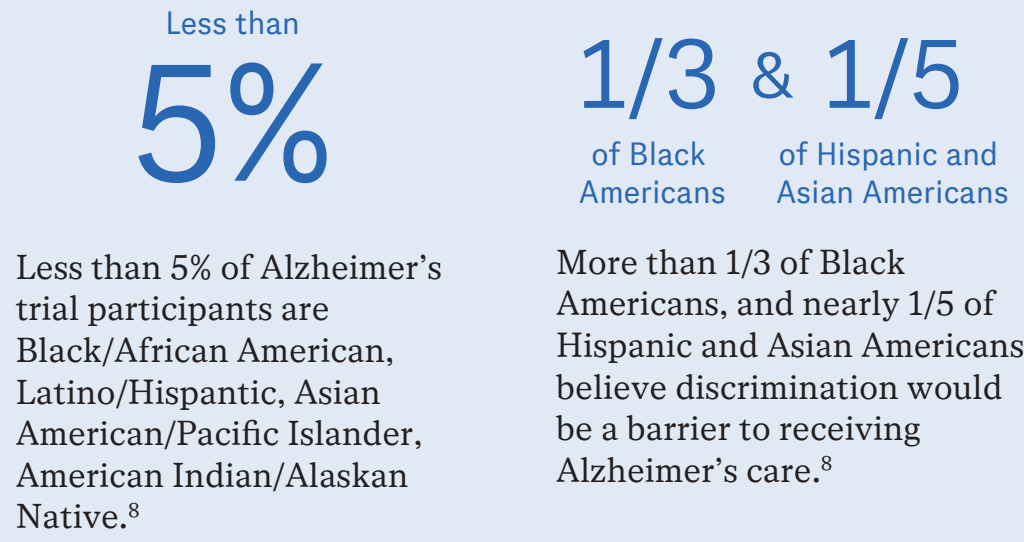
- Unpaid (informal) care provided by family and friends
- Productivity losses of those providing informal care
- Productivity losses in people with Alzheimer’s due to being unable to work, on sick leave or early retirement

Alzheimer’s costs forecasted to increase to levels that are not sustainable for unprepared healthcare systems<sup>4</sup>

Total payments in 2022 for health care, long-term care and hospice services for people age ≥65 years with dementia are estimated to be \$321 billion.<sup>7</sup>



## DIVERSITY, EQUITY, AND INCLUSION IN ALZHEIMER’S DISEASE



## STIGMA ASSOCIATED WITH ALZHEIMER'S DISEASE

