

The background of the slide is a composite image. On the left, there is a dark blue gradient with faint, curved white lines. On the right, there is a photograph of a winding road at night, illuminated by light trails from cars, set against a backdrop of mountains and a colorful sunset sky. The overall aesthetic is modern and tech-oriented.

arcserve®

RECOVERY | CLOUD WORKLOADS | STORAGE | RANSOMWARE REMEDIATION

How data resilience has focused disparate functions into a single **business critical mission**

A study comprising 75 interviews of large organizations in North America, UK and Australia documenting changing views on data resilience



A total of **75 IT executives** of large organizations completed the survey

All had budget and/or technical decision-making responsibility for data management, data protection and storage solutions at a company with 500 to 5,000 employees and at least 100 TB of data

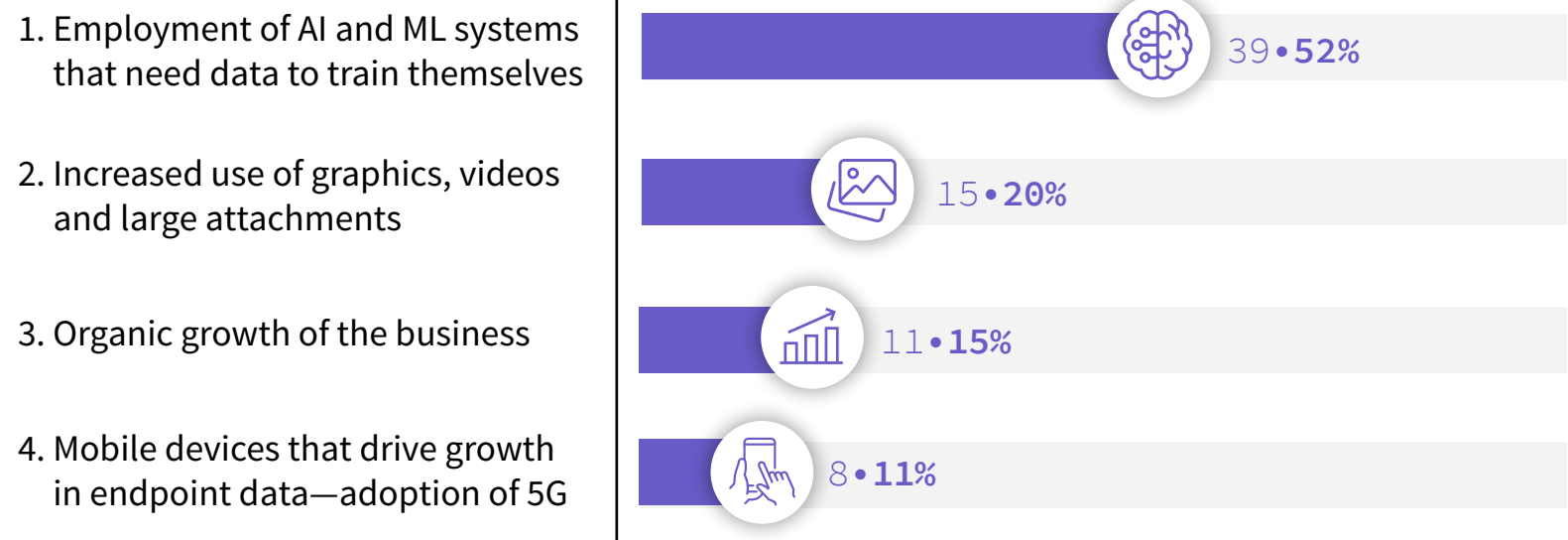
REPRESENTATIVE SAMPLE OF COMPANIES IN THE GLOBAL STUDY

- Magellan Health Systems
- Utah State University
- US Dept of the Interior
- Ford Motor Company
- University of Connecticut Health Center
- NSW Department of Education
- BAE Systems
- The City of Liverpool College
- University of Cambridge
- Starling Bank
- Children's Hospices Across Scotland
- Monzo Bank
- Royal Hospital for Neuro-disability
- Emtec
- United Overseas Bank
- Australian Industry Group

Data growth is leading companies to reconsider their data resilience strategy.

Massive volumes of data are required to support mission critical business processes in an increasingly complex environment.

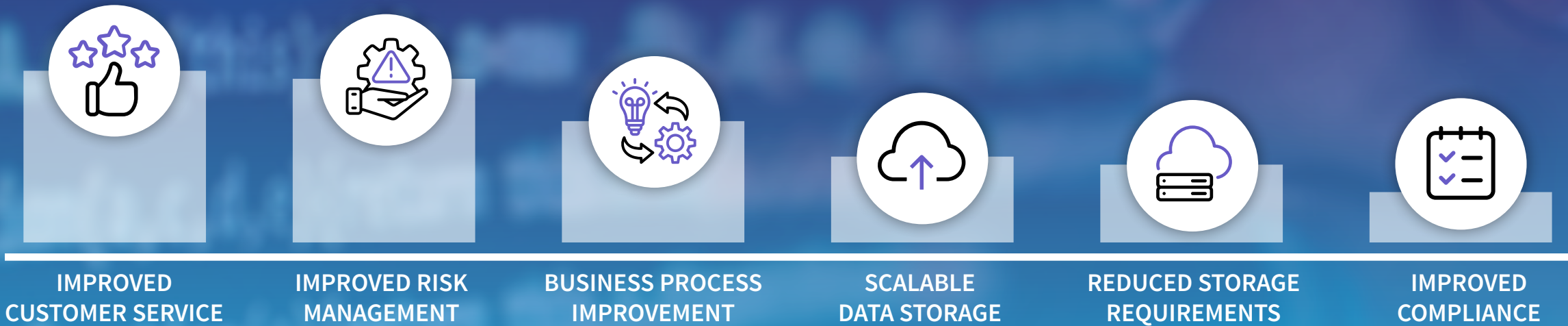
TOP 4 DRIVERS OF DATA GROWTH



PASSWORD(*****)

Critical business functions are **increasingly vulnerable** to compromised data.

Respondents' Top Business Processes Protected by Data Resilience Programs in 2022-2023



Preference for a software-only data resilience solution comes with a cost.



PUBLIC CLOUD

87%

of respondents prefer a cloud based software only solution to protect cloud based services including IaaS PaaS and SaaS Workloads (managing it internally or through an MSP)



TIER DATA BACKUP

79%

of respondents prefer a cloud based software only solution for tiered data backup to the cloud (managing it internally or through an MSP)



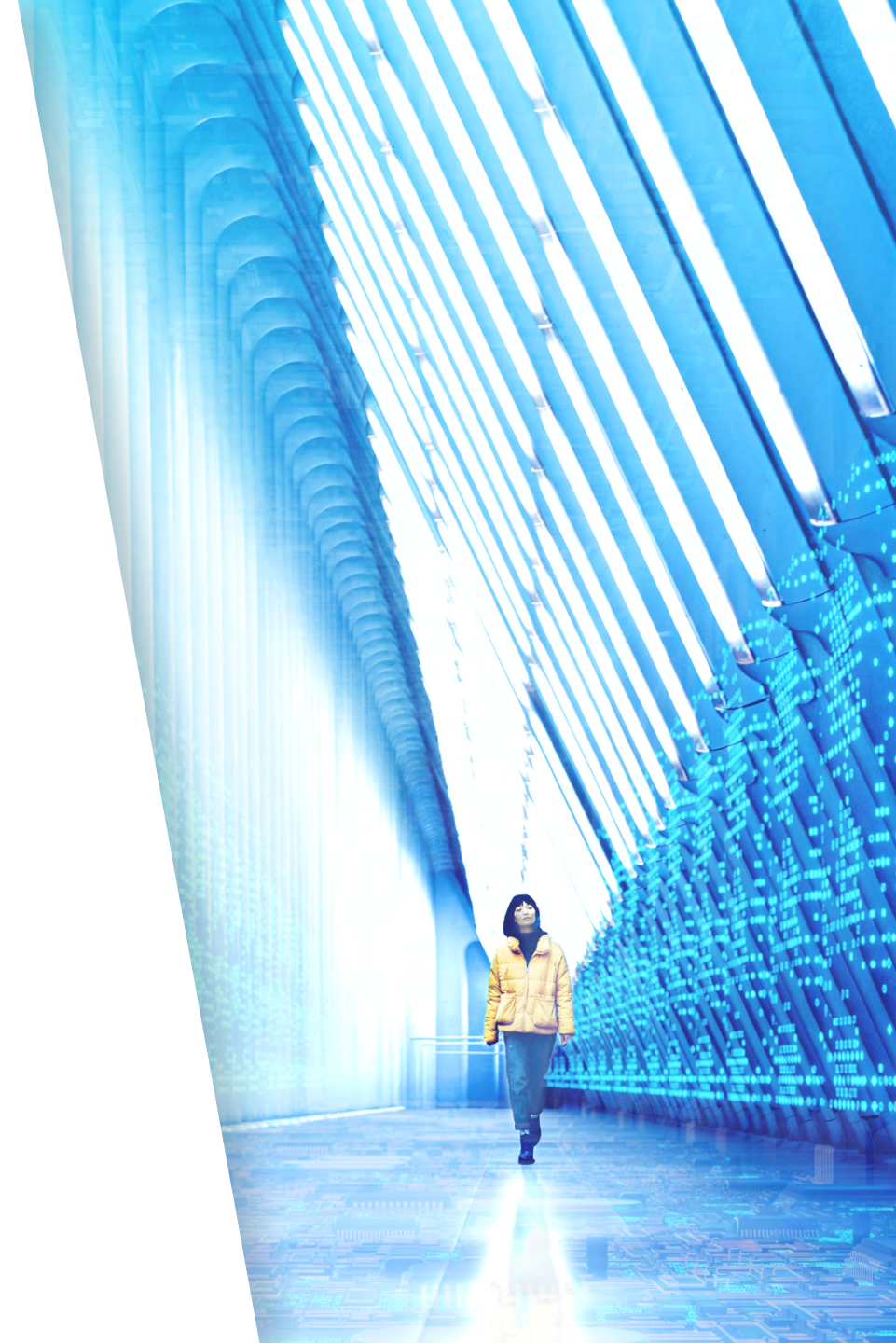
OPERATING SYSTEMS

64%

of respondents prefer a cloud based software only solution to recover operating systems, files, data bases and applications (managing it internally or through an MSP)

Respondents compromise on **key preferences that are often unmet** by most software-only data resilience solutions.

- 72%** Prefer a cloud-agnostic solution
- 64%** Prefer a converged solution where a single device provides back up and ransomware solution
- 60%** Prefer continuous back up capturing every version of the data saved
- 55%** Prefer built-in Wan optimization
- 50%** Are striving for a near-zero RPO



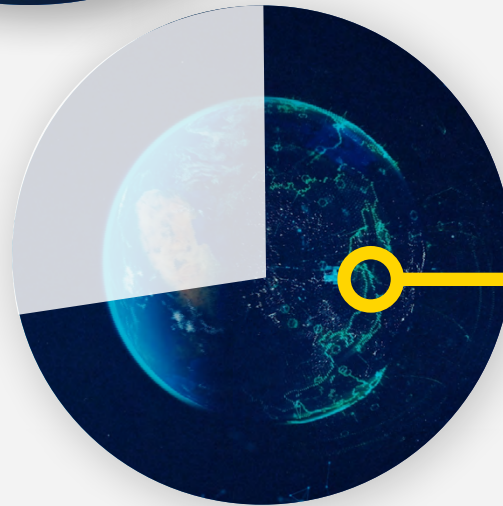


Concerns Relative to Changing Computing Environments



96%

of respondents say **the convergence of data recovery software, cloud storage and ransomware remediation** is consistent with plans to become an efficient, digitally-enabled business.



72%

of respondents find compliance with new requirements re: “country restricted data” where cloud data is restricted to servers located in the country of origin difficult to insure

TAKE THE ARCSERVE

Data Resilience Evaluation

Using the checklist, rate your resilience technology on a scale of 1-5 for each category.

USABILITY		COST OF OWNERSHIP		TECHNICAL PITFALLS		FUTURE PROOF		ON MISSION	
	Recover files easily		Customization required		Cloud vendor agnostic		Scalable		Cloud Snapshots
	RTO & RPO Goals		Technical debt		CDP continuous back-up		Remote site self-service		Data protection delivered as a service
	Office 365 (90 day) data limit		Data integration		Tape support		Flexibility relative to business complexity		Centralized Monitoring and intuitive UI
	Integration of DR software, cloud storage & ransomware protection		Fees for bringing data in and out of the cloud or for recovering files		Cloud-native protection for IAAS, PAAS and SAAS workloads		Support of Kubernetes managed container based applications		Assign multiple backup policies that align with the multiple missions
	Built-in Wan optimization		Time required from IT staff		Remote site data protection		Protects data against attack, no matter where it resides		Remote site data protection
	USABILITY SCORE		COST TO OWN SCORE		TECH PITFALLS SCORE		FUTURE PROOF SCORE		ON MISSION SCORE

CUMULATIVE SCORE



Is your score **Less than 25?**

Does your scoring make
you wonder if there is
something better?

94%

of CIOs stated that the
functionality of data recovery
systems *directly impacts*
customer satisfaction.





arcserve®

Opportunities for
improvement in
data resilience

Intuitive Central Management Console

Save time with a unified user interface to manage local and remote servers and locations.



INFRASTRUCTURE VISUALIZATION

Simplify system management with an easy-to-read network diagram view of your entire environment



DASHBOARD WITH SRM REPORTING

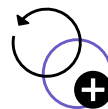
Proactively avoid downtime with graphical insight into your backup environment to monitor the status of all backup activities



MODULAR ARCHITECTURE

Scale the protection to thousands of systems with a multi-tier modular architecture

Quick Recovery



GRANULAR RECOVERY

Restore individual files, emails, Active Directory, Microsoft Exchange, Microsoft SQL Server and Microsoft SharePoint



BARE-METAL RECOVERY

Restore entire Windows systems after disaster on the same or dissimilar hardware

arcserve®

Protect what's **priceless.**

Continue Your Learning Experience



Guided Case
Study Review



Personalized
Demonstration



Evaluation
and Road Map



Q&A with
an Expert



An aerial night view of a city, likely Dubai, with a blue color overlay. The image shows a complex network of roads and buildings, with palm trees visible on the left side. The overall scene is illuminated by city lights, creating a vibrant blue atmosphere.

arcserve®

Protect what's **priceless.**

arcserve.com