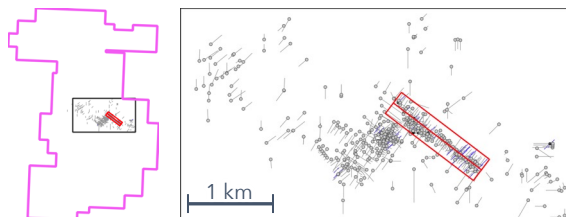
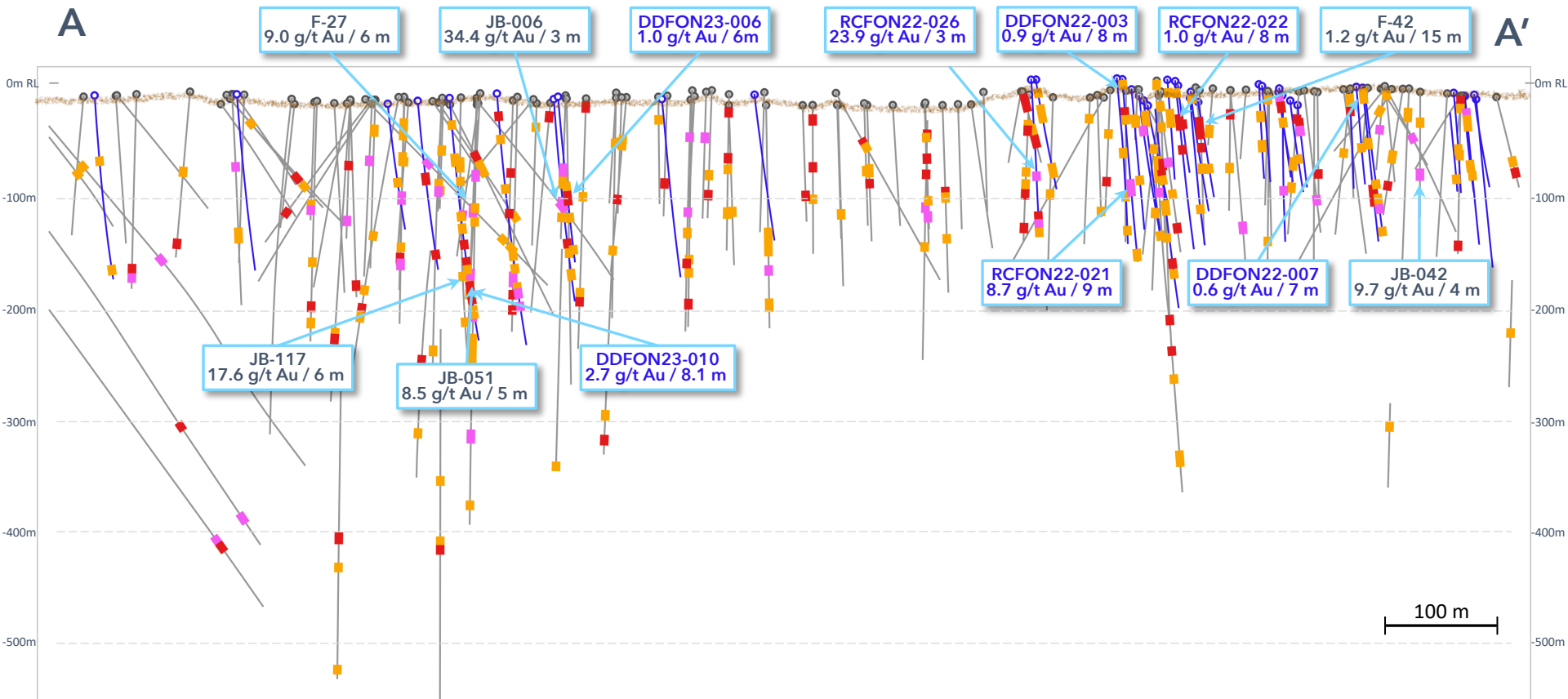


Marcotte Zone

Drillhole Composite Interval Long Section - Looking N035°



Drillhole Composite Grades
(g/t Au)

- 0.4 to 1 g/t Au
- 1 to 3 g/t Au
- >3 g/t Au

- Kiboko drillhole trace
- Historical drillhole trace



For illustration purposes only. Drillhole composites are above a cut-off grade of 0.40 g/t Au over a minimum width of 1m, may contain up to 4m of internal dilution, and are not to scale. Due to the exploratory nature of this drill program and the variable orientations of the mineralized zones the composite intervals may not represent true width.