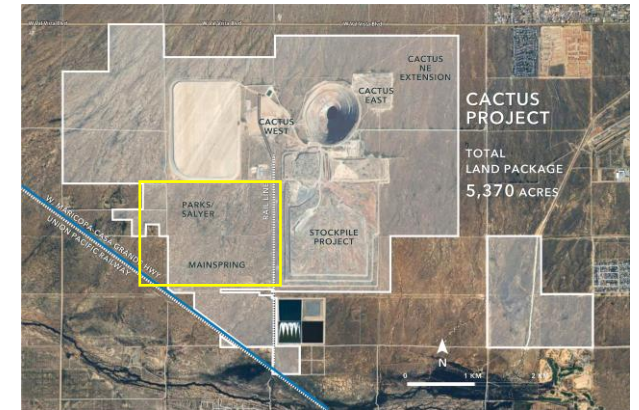
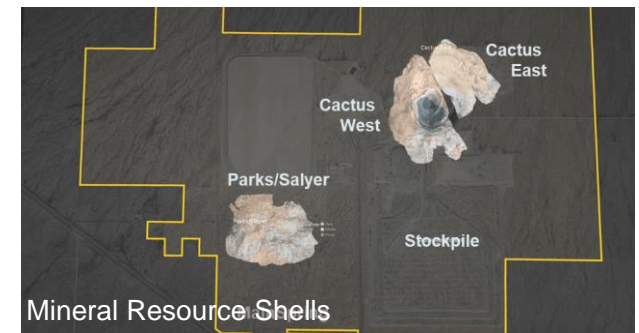


- ECP-184
- ECP-140
- ECP-172
- ECP-174
- ECP-176
- ECP-180
- ECP-181
- ECP-178
- ECP-170
- ECP-173
- ECP-175



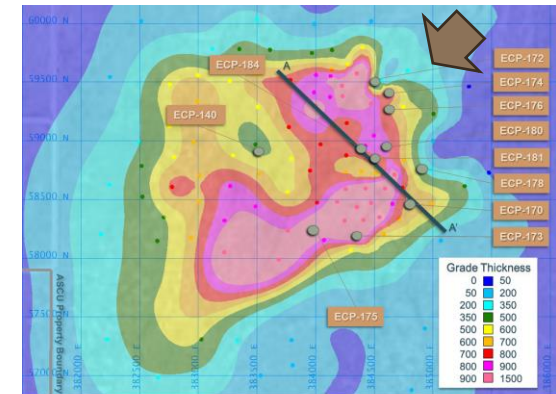
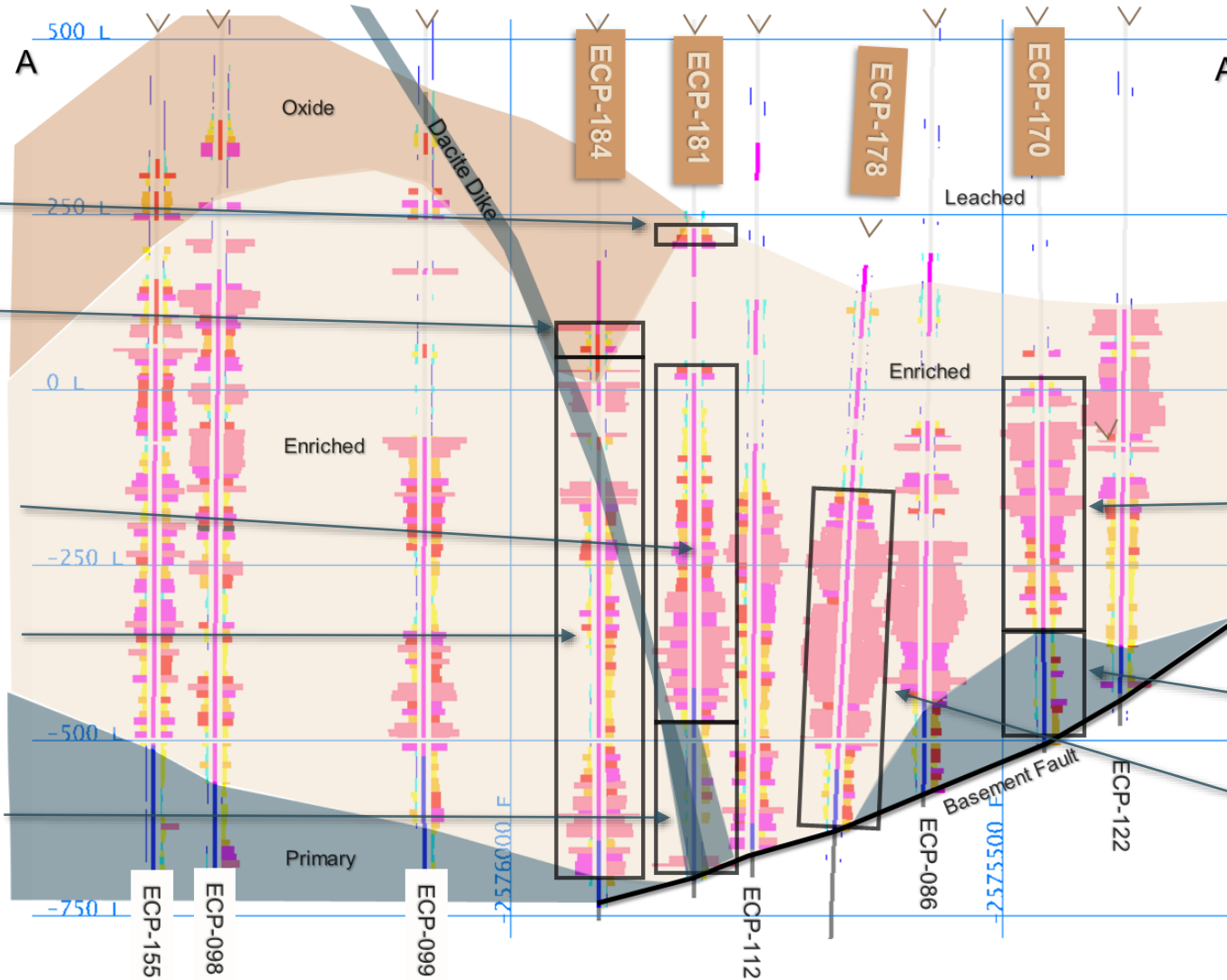
- January 16 Press Release
- Assays Pending



Grade Thickness = $CuT \% \times Vertical\ Thickness\ (ft)$
 Grade thickness calculations include the entire assayed mineralization package down hole
 No grade cutoffs or grade capping has been applied

Parks/Salyer A-A' Cross Section, looking SW *January 16, 2024*

Hole collars are approximately 880 ft above the 500L displayed in this cross section



28.2 ft @ 0.97% CuT, 0.95% Cu TSol

80.0 ft @ 0.87% CuT, 0.81% Cu TSol

536.0 ft @ 1.12% CuT, 1.00% Cu TSol
Incl. 168.0 ft @ 2.08% CuT, 1.86% Cu TSol

721.2 ft @ 1.02% CuT, 0.75% Cu TSol
Incl. 42.5 ft @ 2.15% CuT, 2.11% Cu TSol
And 33.3 ft @ 2.33% CuT, 2.27% Cu TSol
And 133.0 ft @ 1.64% CuT, 1.49% Cu TSol

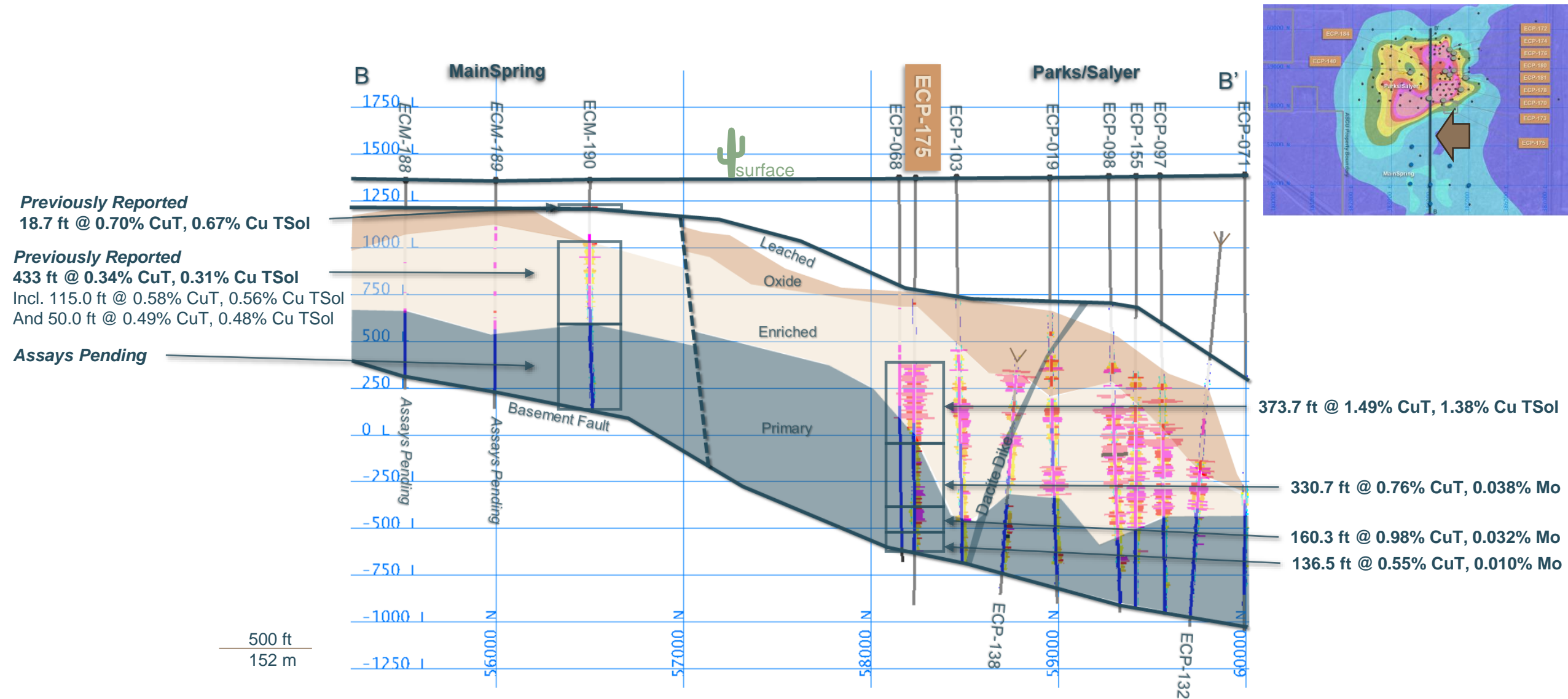
206.2 ft @ 0.65% CuT, 0.006% Mo
Incl. 36.5 ft @ 0.87% CuT, 0.012% Mo
And 15.0 ft @ 2.62% CuT, 0.001% Mo

362.0 ft @ 1.49% CuT, 1.41% Cu TSol
Incl. 134.0 ft @ 2.40% CuT, 2.32% Cu TSol

157.0 ft @ 0.65% CuT, 0.027% Mo
Incl. 30.0 ft @ 0.82% CuT, 0.026% Mo

521.8 ft @ 1.78% CuT, 1.61% Cu TSol
Incl. 220.0 ft @ 2.67% CuT, 2.53% Cu TSol

Parks/Salyer B-B' Cross Section, looking West January 16, 2024



ECP-173 Enriched: Native Copper

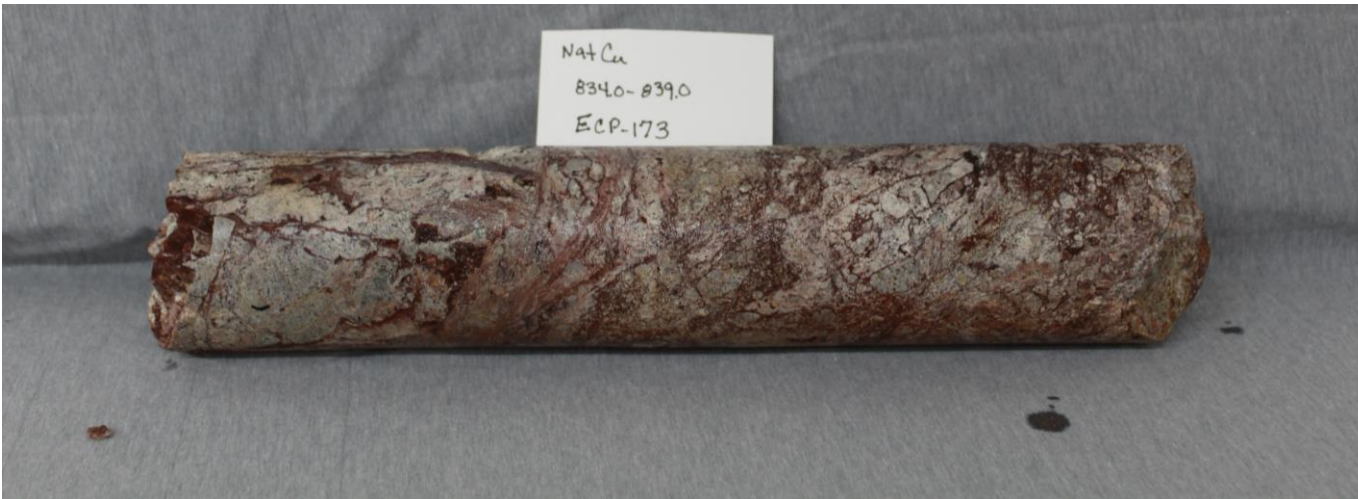


3.15% CuT
2.41% Cu TSol
0.004% Mo

9 ft Interval
831 ft – 840 ft
(2.7 m, 253.3 m – 256.0 m)

Within:
1.46% CuT
1.21% Cu TSol
0.009% Mo

492 ft interval
830.8 ft – 1,323 ft
(150 m, 253 m – 403 m)





1.94% CuT
1.90% Cu TSol
0.004% Mo

10.3 ft Interval
873.7 ft – 884 ft
(3.1 m, 266.2 m – 269.4 m)



— **ECP-173: Enriched, Covelite**

Within:

1.46% CuT	492.2 ft interval
1.21% Cu TSol	830.8 ft – 1,323 ft
0.009% Mo	(150 m, 253.2 m – 403.3 m)

ECP-174 Enriched: Disseminated and Veinlet Chalcocite in Granite Breccia



5.67% CuT
4.04% Cu TSol
0.007% Mo

6.3 ft Interval
1,479.7 ft – 1,486.0 ft
 (1.9 m, 451.0 m – 452.9 m)

Within:
1.37% CuT
1.30% Cu TSol
0.033% Mo

530.3 ft interval
1,479.7 ft – 2,010 ft
 (161.6 m, 451.0 m – 612.6 m)



1.00% CuT
0.99% Cu TSol
0.023% Mo

10 ft Interval
1,410 ft – 1,420 ft
(3.0 m, 429.8 m – 432.8 m)



— **ECP-174:Oxides**

Within:

1.03% CuT	67.5 ft interval
1.02% Cu TSol	1,386 ft – 1,453 ft
0.029% Mo	(20.4 m, 422.5 m – 442.9 m)

January 16, 2024



5.00% CuT
4.62% Cu TSol
0.056% Mo

10 ft Interval
1,276 ft – 1,286 ft
(3.0 m, 388.9 m – 392.0 m)



— **ECP-175: Enriched, Covellite**

Within:

1.49% CuT	373.7 ft interval
1.38% Cu TSol	993.3 ft – 1,367.0 ft
0.010% Mo	(113.9 m, 302.8 m – 416.7 m)

ECP-175 Primary: Disseminated Chalcopyrite in MP Breccia



0.78% CuT
0.024% Mo

10.0 ft Interval
1,545.0 ft – 1,555.0 ft
(3.0 m, 470.9 – 474.0 m)

Within:
0.76% CuT
0.038% Mo

330.7 ft interval
1,367.0 ft – 1,697.7 ft
(100.8 m, 416.7 m – 517.5 m)



1.39% CuT
1.34% Cu TSol
0.010% Mo

10 ft Interval
1,180 ft – 1,190 ft
(3.0 m, 359.7 m – 362.7 m)



— **ECP-176: Oxides**

Within:

1.26% CuT	32.2 ft interval
1.20% Cu TSol	1,170.2 ft – 1,202.4 ft
0.009% Mo	(9.8 m, 356.7 m – 366.5 m)

ECP-178 Enriched: Disseminated Chalcocite and Pyrite in Mixed Breccia



1.80% CuT
1.70% Cu TSol
0.016% Mo

10.0 ft Interval
1,832 ft – 1,842 ft
 (3.0 m, 558.4 m – 561.4 m)

Within:
1.78% CuT
1.61% Cu TSol
0.011% Mo

521 ft interval
1,502.5 ft – 2,024.3 ft
 (159.0 m, 458.0 m – 617.0 m)

ECP-170 Enriched: Disseminated and Vein Chalcocite in Mixed Breccia



5.97% CuT
5.73% Cu TSol
0.025% Mo

10.0 ft Interval
1,537.0 ft – 1,547.0 ft
 (3.0 m, 468.5 m – 471.5 m)

Within:
1.49% CuT
1.41% Cu TSol
0.010% Mo

362.0 ft interval
1,365 ft – 1,727 ft
 (110.3 m, 416.1 m – 526.4 m)

ECP-172 Enriched: Disseminated Chalcocite and Pyrite in Granite



1.62% CuT
1.55% Cu TSol
0.015% Mo

10.1 ft Interval
1,775.9 ft – 1,786.0 ft
(3.1 m, 541.3 m – 544.4 m)

Within:
0.87% CuT
0.78% Cu TSol
0.027% Mo

194 ft interval
1,770 ft – 1,964 ft
(59.1 m, 539.5 m – 598.6 m)

ECP-180 Enriched: Patchy and Disseminated Chalcocite in Mixed Breccia



2.33% CuT
2.33% Cu TSol
0.005% Mo

10.0 ft Interval
1,207.0 ft – 1,217.0 ft
 (3.0 m, 367.9 m – 370.9 m)

Within:
 1.12% CuT
 0.92% Cu TSol
 0.008% Mo

643.0 ft interval
1,448.0 ft – 2,091.0 ft
 (196.0 m, 441.4 m – 637.3 m)

ECP-181 Enriched: Patchy and Disseminated Chalcocite in Mixed Breccia



4.39% CuT
4.37% Cu TSol
0.015% Mo

10.0 ft Interval
1,746.0 ft – 1,756.0 ft
 (3.0 m, 532.2 m – 535.2 m)

Within:
 1.12% CuT
 1.00% Cu TSol
 0.009% Mo

536.0 ft interval
1,336.0 ft – 1,872.0 ft
 (163.4 m, 407.2 m – 570.6 m)

ECP-184 Enriched: Disseminated Chalcocite and Pyrite in Mixed Breccia



1.63% CuT
1.56% Cu TSol
0.006% Mo

9.9 ft Interval
1,987.1 ft – 1,997 ft
 (3 m, 605.7 m – 608.7 m)

Within:
 1.02% CuT
 0.75% Cu TSol
 0.011% Mo

721.2 ft interval
1,365.0 ft – 2,086.2 ft
 (219.8 m, 416.1 m – 635.9 m)