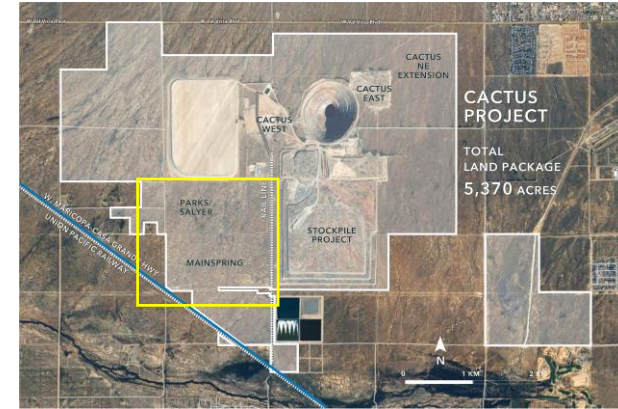
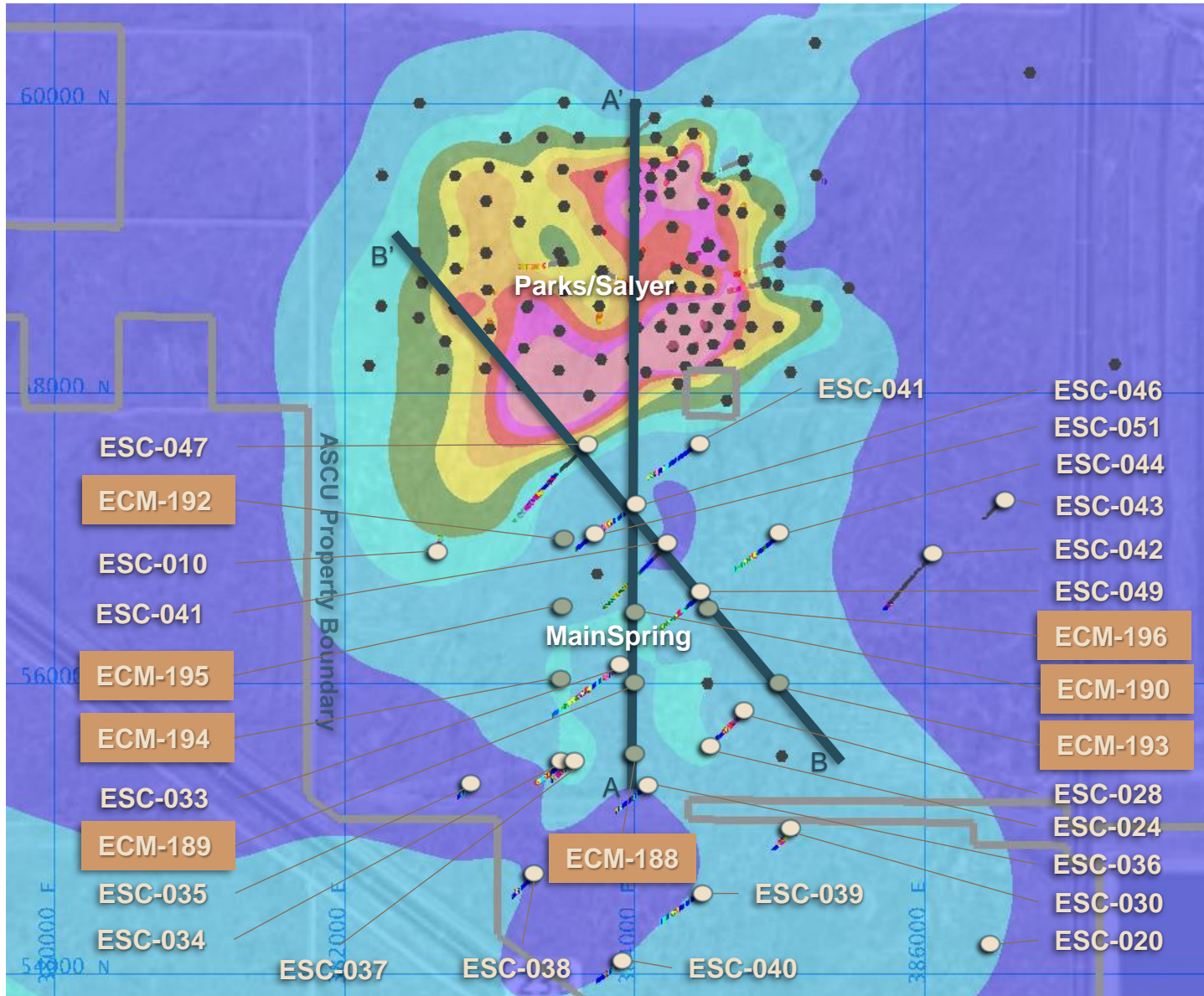
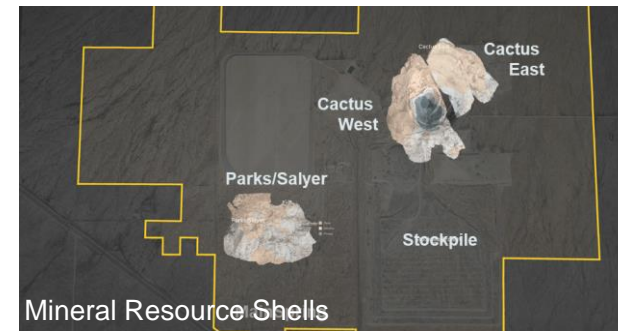


Parks/Salyer and MainSpring Plan View January 25, 2024

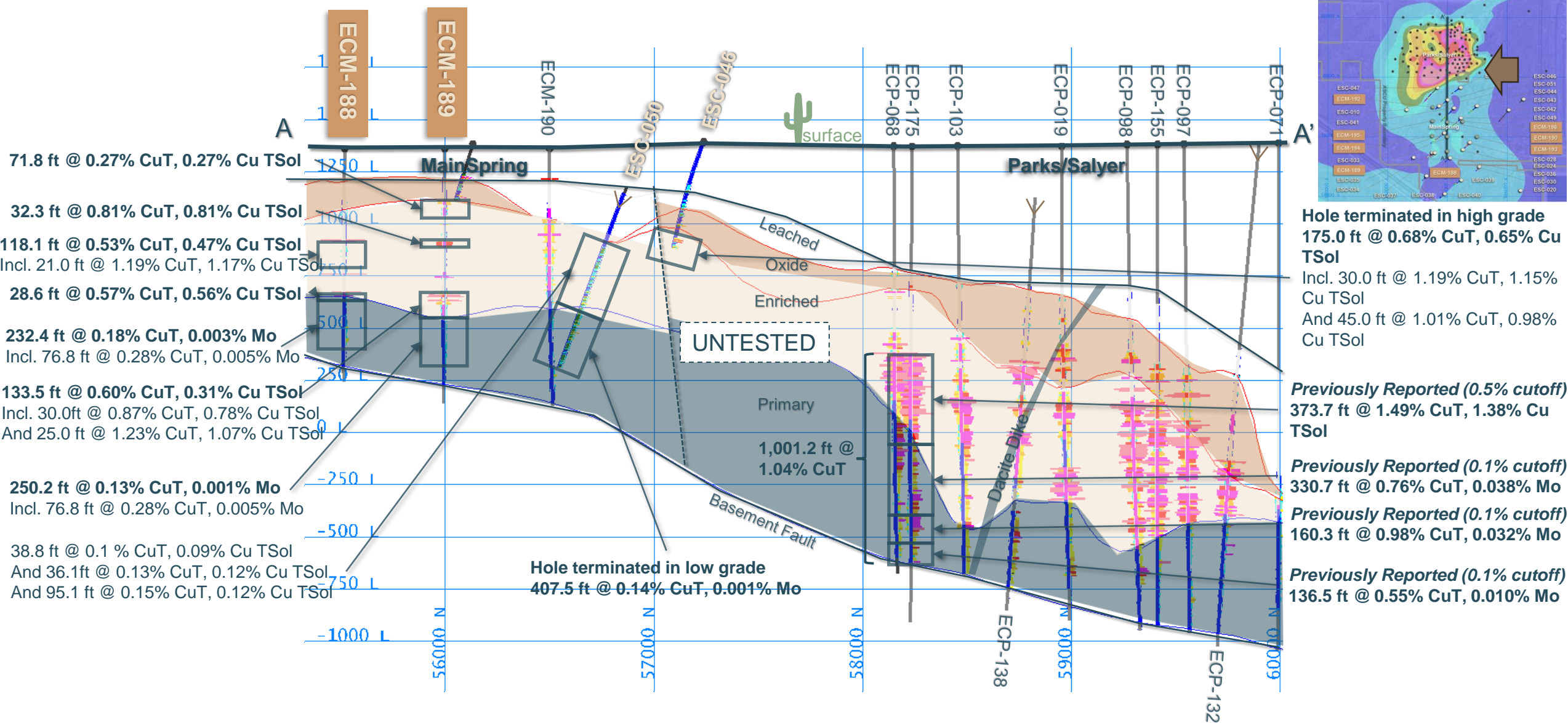


- January 25 ASCU Holes
- January 25 Legacy Holes

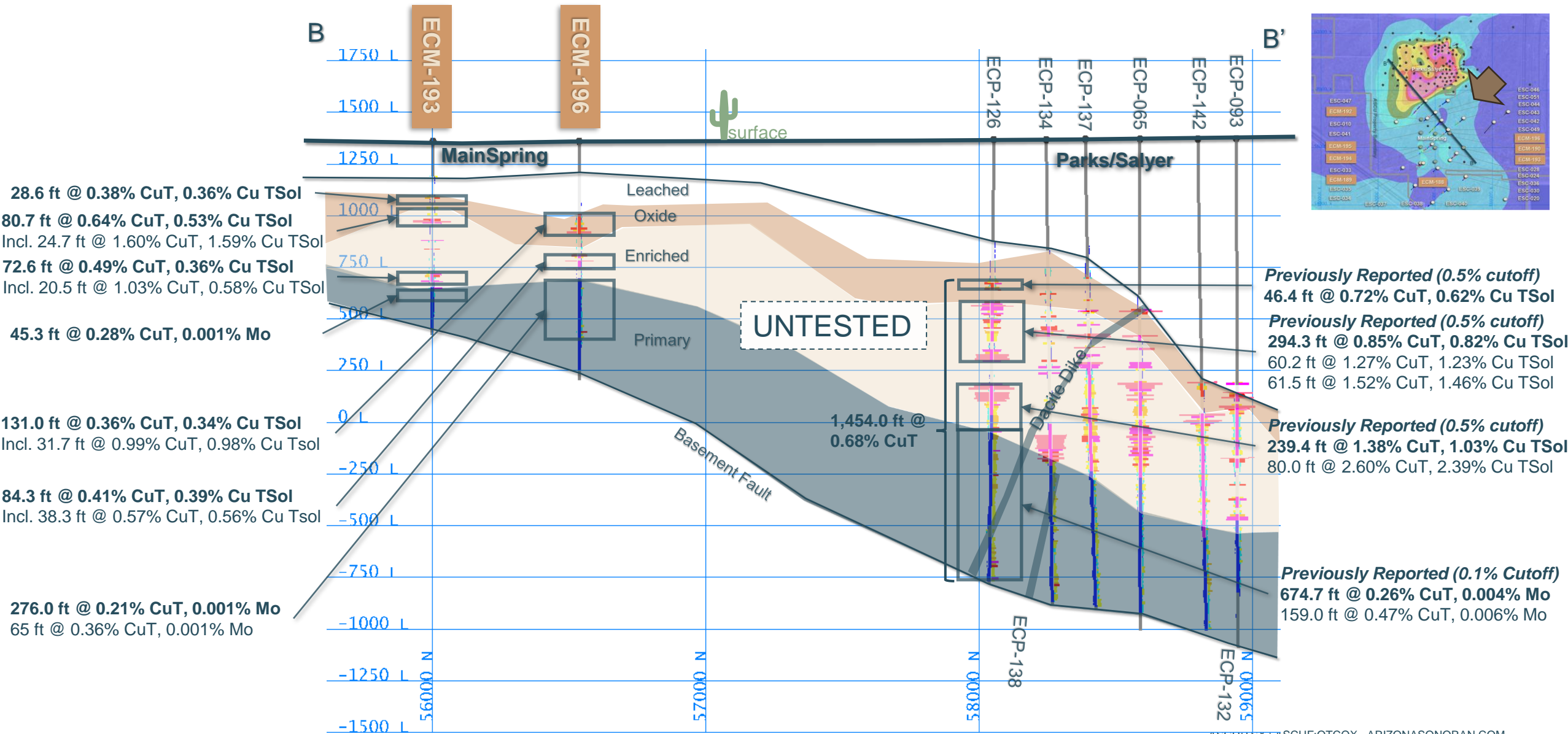


Grade Thickness = $CuT \% \times Vertical\ Thickness\ (ft)$
 Grade thickness calculations include the entire assayed mineralization package down hole
 No grade cutoffs or grade capping has been applied

MainSpring A-A' Long Section, looking West January 25, 2024



MainSpring B-B' Long Section, looking SW January 25, 2024



ECM-188 Enriched: Bleb and Veinlet Chalcocite in Granite Breccia



3.873% CuT
3.813% Cu TSol
0.002% Mo

6.0 ft Interval
435.0 ft – 441.0 ft
 (1.8 m, 132.6 – 134.4 m)

Within:
 0.53% CuT
 0.47% Cu TSol
 0.003% Mo

118.1 ft interval
 435.0 ft – 553.1 ft
 (36.0 m, 132.6 m – 168.6 m)

ECM-189 Oxide: Disseminated Chrysocolla and Native Copper in Granite



2.045% CuT
1.887% Cu TSol
0.001% Mo

10.0 ft Interval
697.0 ft – 707.0 ft
 (3.0 m, 212.4 – 215.5 m)

Within:
 0.87% CuT
 0.78% Cu TSol
 0.001% Mo

30.0 ft interval
677.0 ft – 707.0 ft
 (9.1 m, 206.4 m – 215.5 m)

ECM-189 Enriched: Disseminated Chalcocite in Diabase



2.339% CuT
2.067% Cu TSol
0.001% Mo

7.7 ft Interval
724.3 ft – 732.0 ft
 (2.3 m, 220.8 – 223.1 m)

Within:
0.52% CuT
0.46% Cu TSol
0.001% Mo

103.5 ft interval
707.0 ft – 810.5 ft
 (31.5 m, 215.5 m – 247.0 m)

ECM-192 Enriched: Vein and Disseminated Chalcocite in Granite



1.164% CuT
1.157% Cu TSol
0.002% Mo

5.3 ft Interval
532.7 ft – 538.0 ft
 (1.6 m, 162.4 – 164.0 m)

Within:
 0.44% CuT
 0.42% Cu TSol
 0.006% Mo

40.3 ft interval
 532.7 ft – 573.0 ft
 (12.3 m, 162.4 m – 174.7 m)

ECM-193 Oxide: Patchy Chrysocolla in Fault Breccia



0.826% CuT
0.786% TSol
0.002% Mo

7.5 ft Interval
271.2 ft – 278.7 ft
 (2.3 m, 82.7 – 84.9 m)

Within:
 0.38% CuT
 0.36% TSol
 0.002% Mo

28.6 ft interval
258.0 ft – 286.6 ft
 (8.7 m, 78.6 m – 87.4 m)

ECM-193 Enriched: Patchy and Disseminated Chalcocite in Mixed Breccia



2.474% CuT
2.471% Cu TSol
0.002% Mo

10.0 ft Interval
384.0 ft – 394.0 ft
 (3.0 m, 117.0 – 120.1 m)

Within:
 0.64% CuT
 0.61% Cu TSol
 0.002% Mo

80.7 ft interval
 318.0 ft – 398.7 ft
 (24.6 m, 96.9 m – 121.5 m)

ECM-193 Primary: Patchy and Disseminated Chalcopyrite in Granite



1.268% CuT
0.001% Mo

6.0 ft Interval
708.0 ft – 714.0 ft
(1.8 m, 215.8 – 217.6 m)

Within:
0.28% CuT
0.001% Mo

45.3 ft interval
708.0 ft – 753.3 ft
(13.8 m, 215.8 m – 229.6 m)

ECM-194 Enriched: Vein and Disseminated Chalcocite in MP-Granite Breccia



1.298% CuT
1.297% Cu TSol
0.001% Mo

9.7 ft Interval
788.3 ft – 798.0 ft
 (3.0 m, 240.3 – 243.2 m)

Within:
 0.30% CuT
 0.25% Cu TSol
 0.001% Mo

471.1 ft interval
 395.9 ft – 867.0 ft
 (143.6 m, 120.7 m – 264.3 m)

ECM-195: Oxide, Chrysocolla



3.456% CuT
3.422% Cu TSol
0.001% Mo

4.9 ft Interval
147.0 ft – 151.9 ft
(1.5 m, 44.8 m – 46.3 m)



Within:

0.63% CuT

0.59% Cu TSol

0.001% Mo

41.0 ft interval

145.0 ft – 186.0 ft

(12.5 m, 44.2 m – 56.7 m)

ECM-195 Enriched: Disseminated and Veinlet Chalcocite in Gr-Mp Breccia



0.795% CuT
0.236% Cu TSol
0.001% Mo

11.6 ft Interval
470.0 ft – 481.6 ft
 (3.5 m, 143.3 – 146.8 m)

Within:
0.44% CuT
0.40% TSol
0.001% Mo

207.6 ft interval
440.0 ft – 647.6 ft
 (63.3 m, 134.1 m – 197.4 m)

ECM-196 Oxide: Fracture Controlled Malachite in Granite



1.511% CuT
1.508% TSol
0.001% Mo

10.0 ft Interval
437.0 ft – 447.0 ft
(3.0 m, 133.2 – 136.2 m)

Within:
0.36% CuT
0.34% TSol
0.002% Mo

131.0 ft interval
362.0 ft – 493.0 ft
(39.9 m, 110.3 m – 150.3 m)