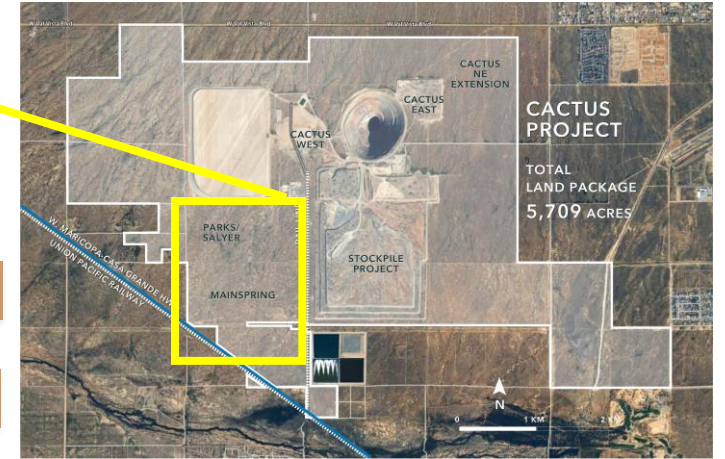
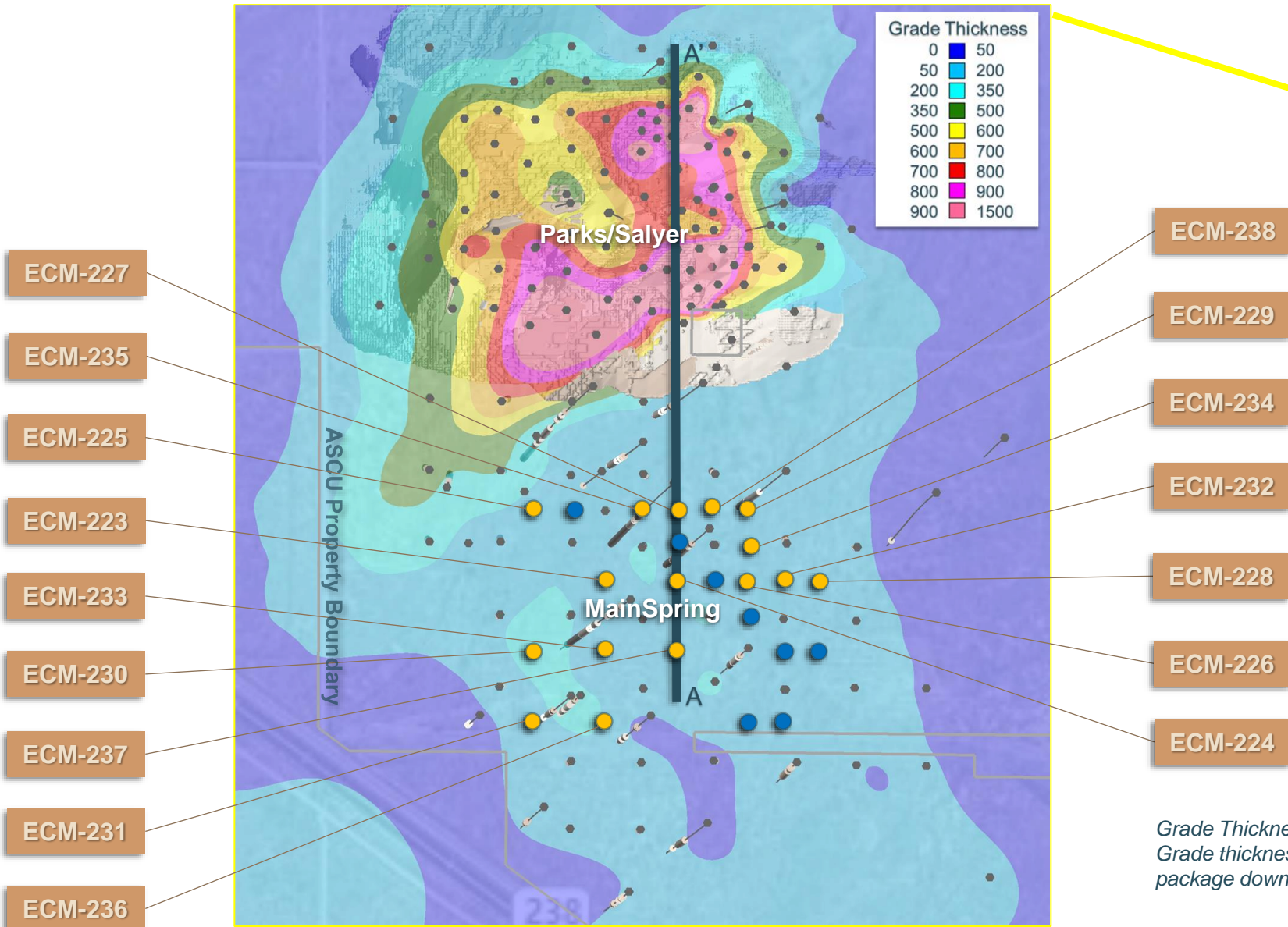
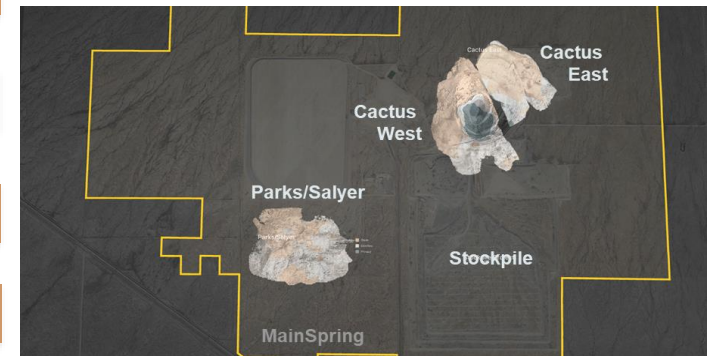


MainSpring - Parks/Salyer Plan View May 21, 2024



- May 21 Press Release
- Assays Pending
- Previously Released

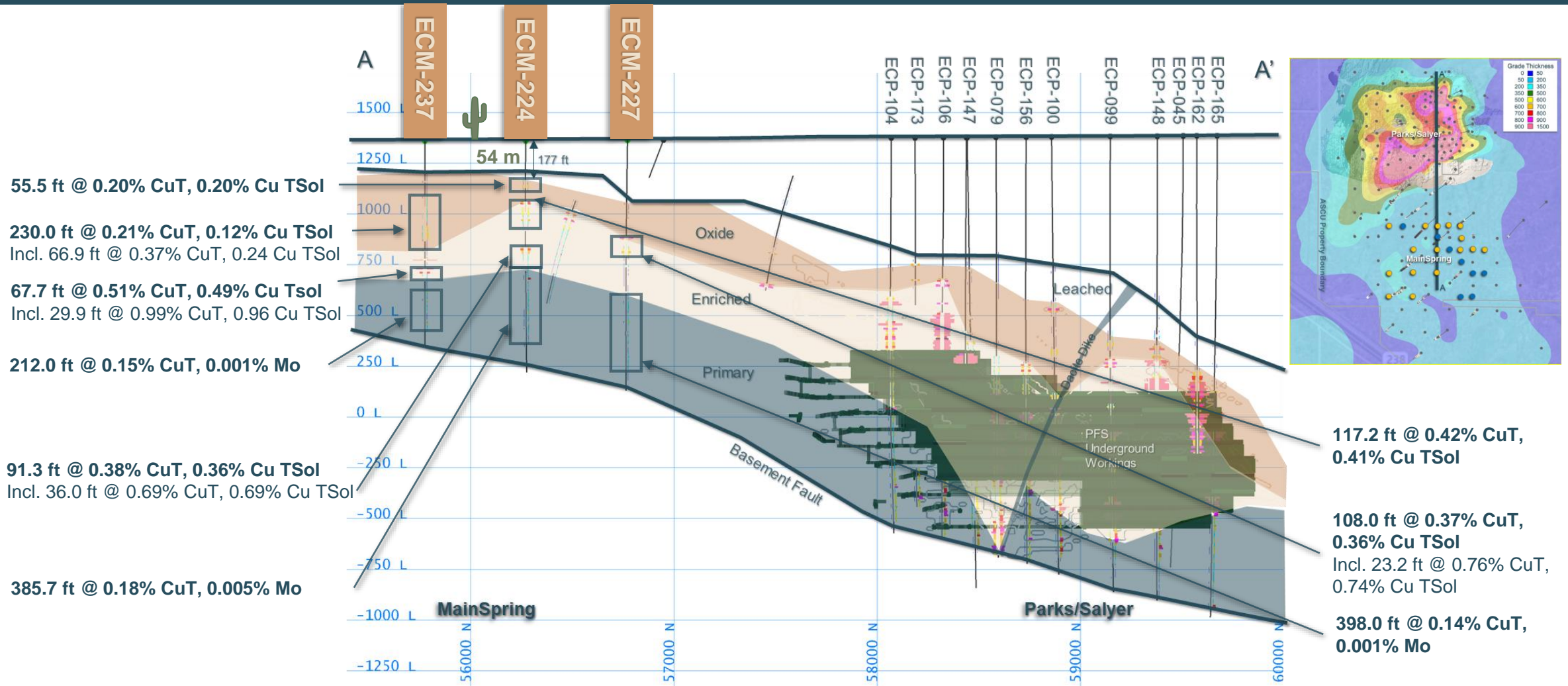


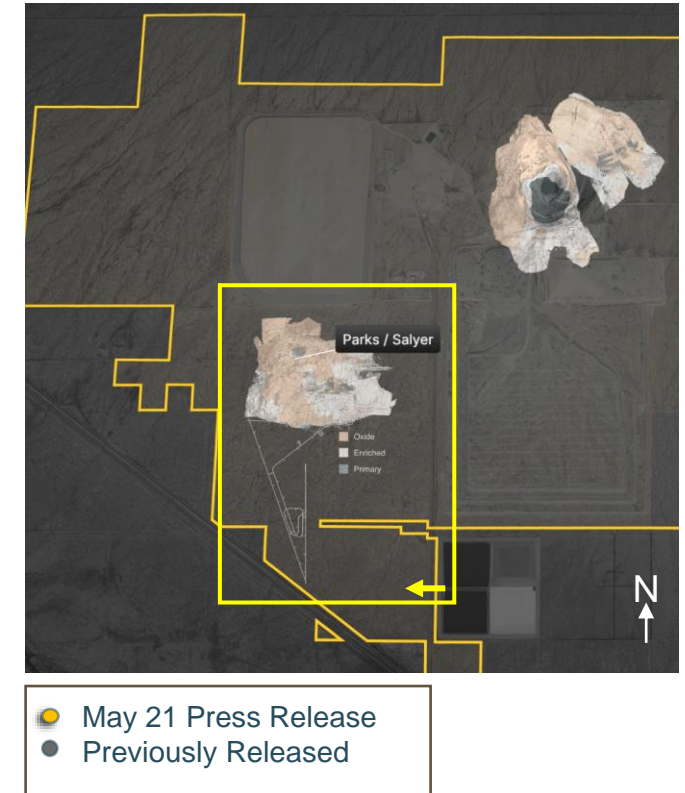
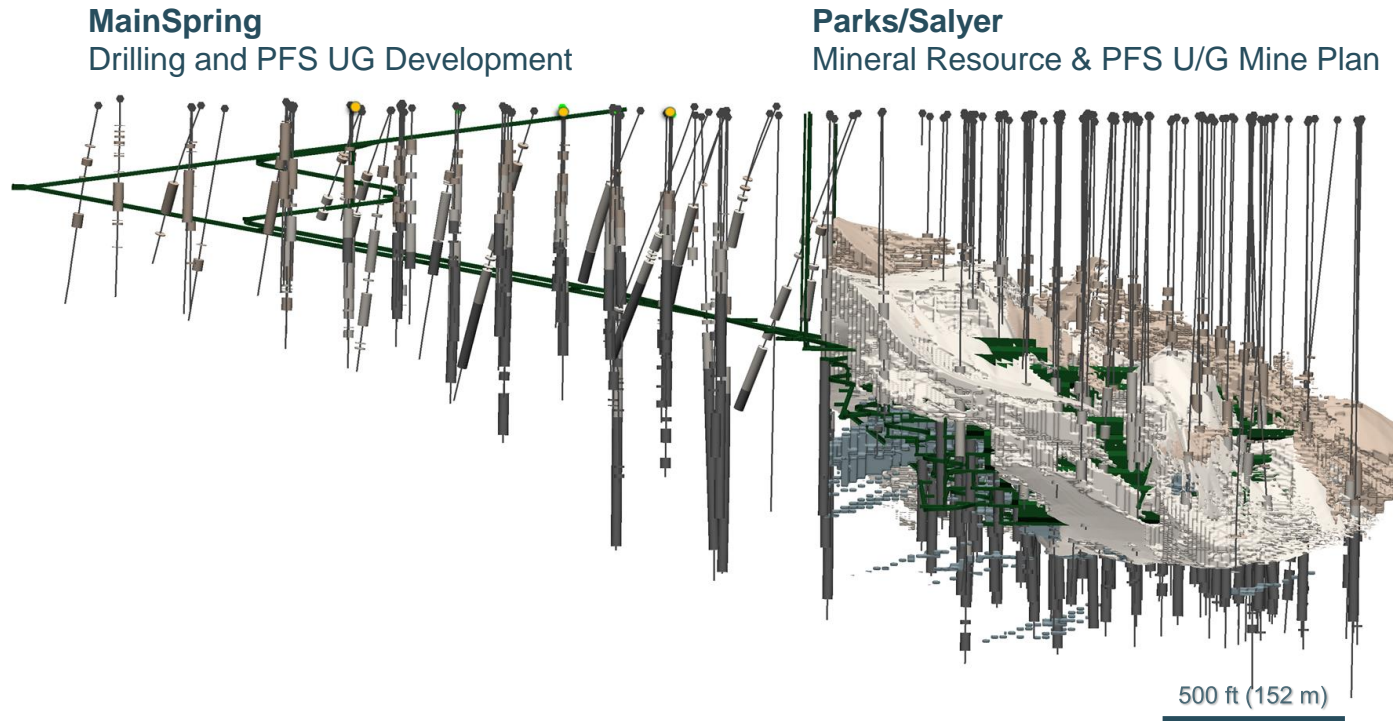
- ECM-238
- ECM-229
- ECM-234
- ECM-232
- ECM-228
- ECM-226
- ECM-224

- ECM-227
- ECM-235
- ECM-225
- ECM-223
- ECM-233
- ECM-230
- ECM-237
- ECM-231
- ECM-236

*Grade Thickness = CuT % x Vertical Thickness (ft)
 Grade thickness calculations include the entire assayed mineralization package down hole. No grade cutoffs or grade capping has been applied*

MainSpring - Parks/Salyer A-A' Cross Section May 21, 2024

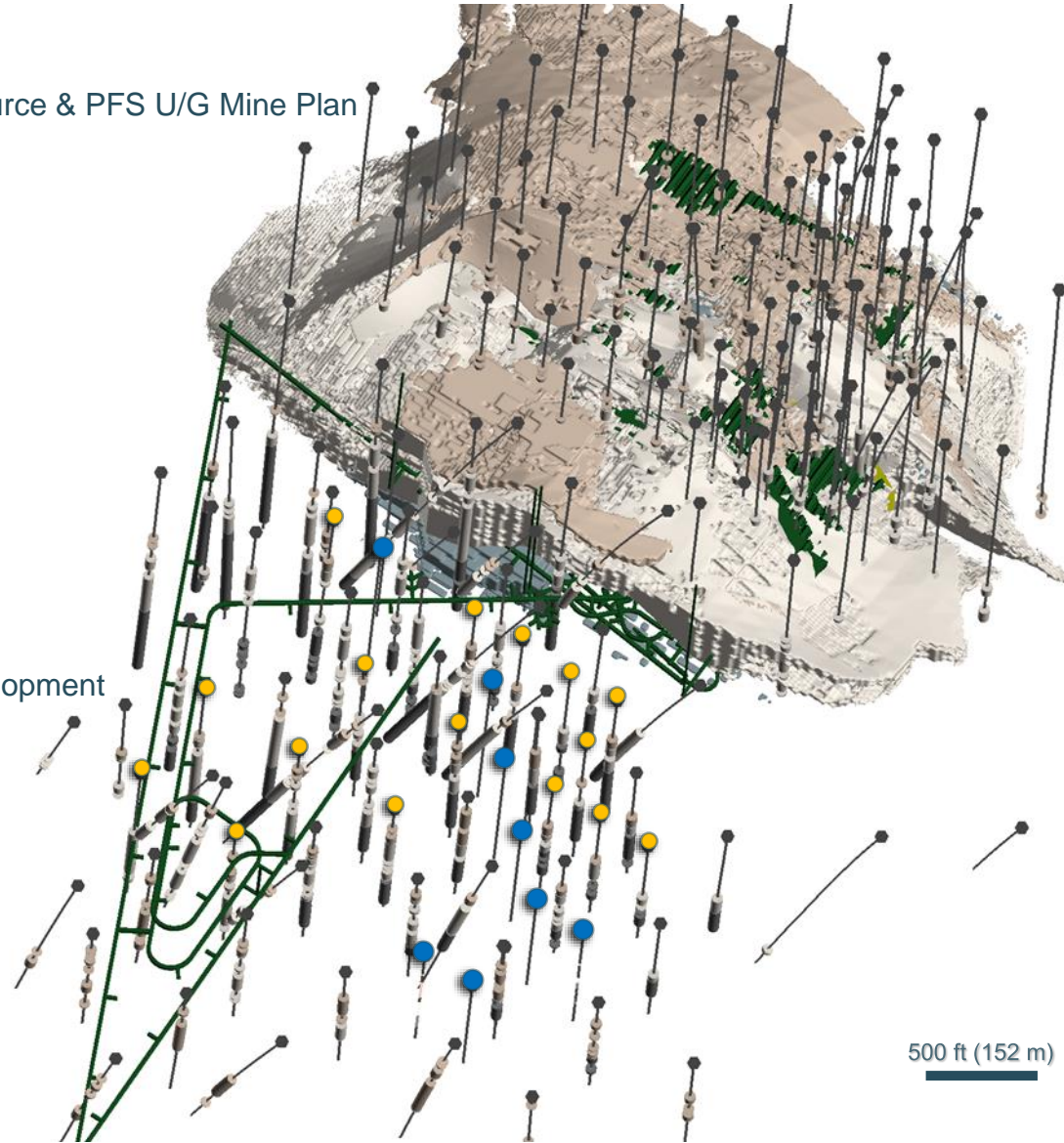




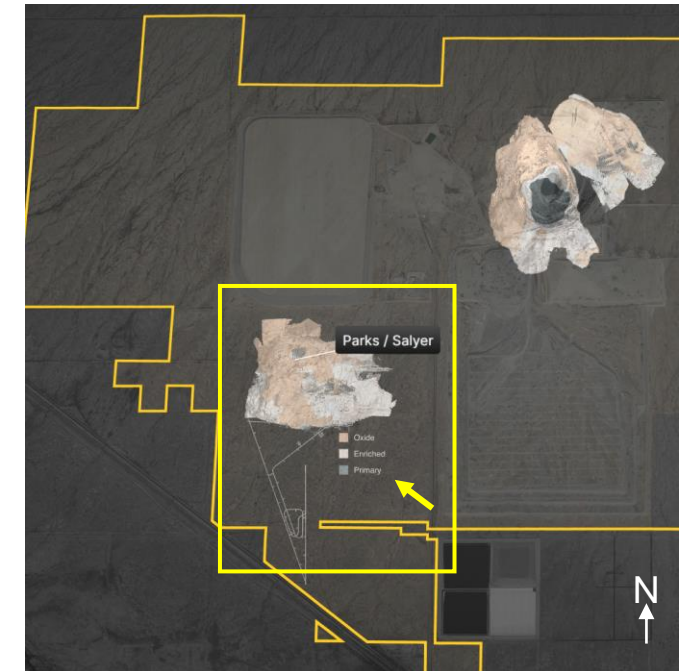
MainSpring - Parks/Salyer: Oblique View Looking West May 21, 2024

Parks/Salyer
Mineral Resource & PFS U/G Mine Plan

MainSpring
Drilling and PFS UG Development



- May 21 Press Release
- Assays Pending
- Previously Released



ECM-223 Oxide: Exotic Tenorite in Conglomerate



1.557% CuT
1.507% TSol
0.001% Mo

6.0 ft Interval
137.0 ft – 143.0 ft
(1.8 m, 41.8 m – 43.6 m)

Within:
1.12% CuT
0.94% TSol
0.001% Mo

25.1 ft interval
137.0 ft – 162.1 ft
(7.7 m, 41.8 m – 49.4 m)

ECM-224 Enriched: Disseminated and Vein Chalcocite in Granite



0.807% CuT
0.791% TSol
0.002% Mo

9.8 ft Interval
297.2 ft – 307.0 ft
 (3.0 m, 90.6 m – 93.6 m)

Within:
 0.42% CuT
 0.41% TSol
 0.002% Mo

117.2 ft interval
297.2 ft – 414.4 ft
(35.7 m, 90.6 m – 126.3 m)

ECM-225 Enriched: Disseminated and Vein Chalcocite in Mp-Gr Breccia



1.395% CuT
1.36% TSol
0.002% Mo

10.6 ft Interval
406.4 ft – 417.0 ft
(3.2 m, 123.9 m – 127.1 m)

Within:

0.36% CuT
0.35% TSol
0.003% Mo

248.6 ft interval
406.4 ft – 655.0 ft
(75.8 m, 123.9 m – 199.6 m)

ECM-226 Oxide: Disseminated Chrysocolla in Brecciated Mp



0.655% CuT
0.585% TSol
0.001% Mo

10 ft Interval
411.0 ft – 421.0 ft
 (3.0 m, 125.3 m – 128.3 m)

Within:
 0.23% CuT
 0.19% TSol
 0.001% Mo

127.0 ft interval
 385.0 ft – 512.0 ft
 (38.7 m, 117.3 m – 156.1 m)

ECM-227 Enriched: Disseminated and Veinlet Chalcocite in Granite



1.388% CuT
1.349% TSol
0.002% Mo

9.3 ft Interval
476.7 ft – 486.0 ft
 (2.8 m, 145.3 m – 148.1 m)

Within:
 0.37% CuT
 0.36% TSol
 0.002% Mo

108.0 ft interval
 467.0 ft – 575.0 ft
 (32.9 m, 142.3 m – 175.3 m)

ECM-228 Primary: Bleb Chalcopyrite in Fault Breccia



2.127% CuT
0.001% Mo

10.0 ft Interval
730.0 ft – 740.0 ft
(3.0 m, 222.5 m – 225.6 m)

Within:
0.66% CuT
0.001% Mo

90.0 ft interval
702.0 ft – 792.0 ft
(27.4 m, 214.0 m – 241.4 m)

ECM-229 Enriched: Disseminated Chalcocite in Brecciated Granite



0.45% CuT
0.445% TSol
0.002% Mo

10.0 ft Interval
457.0 ft – 467.0 ft
 (3.0 m, 139.3 m – 142.3 m)

Within:
 0.22% CuT
 0.21% TSol
 0.002% Mo

102.9 ft interval
 428.6 ft – 531.5 ft
 (31.4 m, 130.6 m – 162.0 m)

ECM-231 Enriched: Disseminated Chalcocite in Brecciated Mp



0.779% CuT
0.725% TSol
0.002% Mo

10.0 ft Interval
709.0 ft – 719.0 ft
 (3.0 m, 216.1 m – 219.2 m)

Within:
 0.28% CuT
 0.24% TSol
 0.002% Mo

498.2 ft interval
 588.8 ft – 1,087.0 ft
 (151.9 m, 179.5 m – 331.3 m)

ECM-235 Enriched: Disseminated Chalcocite in Gr-Mp Breccia



0.385% CuT
0.379% TSol
0.003% Mo

10.3 ft Interval
456.7 ft – 467.0 ft
 (3.1 m, 139.2 m – 142.3 m)

Within:

0.23% CuT
0.23% TSol
0.002% Mo

61.2 ft interval
456.7 ft – 517.9 ft
 (18.7 m, 139.2 m – 157.9 m)

ECM-236 Enriched: Disseminated and Veinlet Chalcocite in Brecciated Granite



1.734% CuT
1.706% TSol
0.003% Mo

10.0 ft Interval
705.0 ft – 715.0 ft
(3.0 m, 214.9 m – 217.9 m)

Within:

0.46% CuT
 0.41% TSol
 0.002% Mo

275.0 ft interval
 623.0 ft – 898.0 ft
 (83.8 m, 189.9 m – 273.7 m)