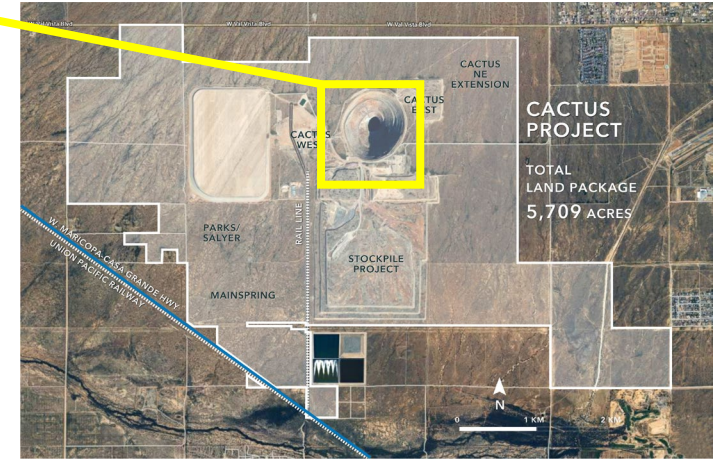
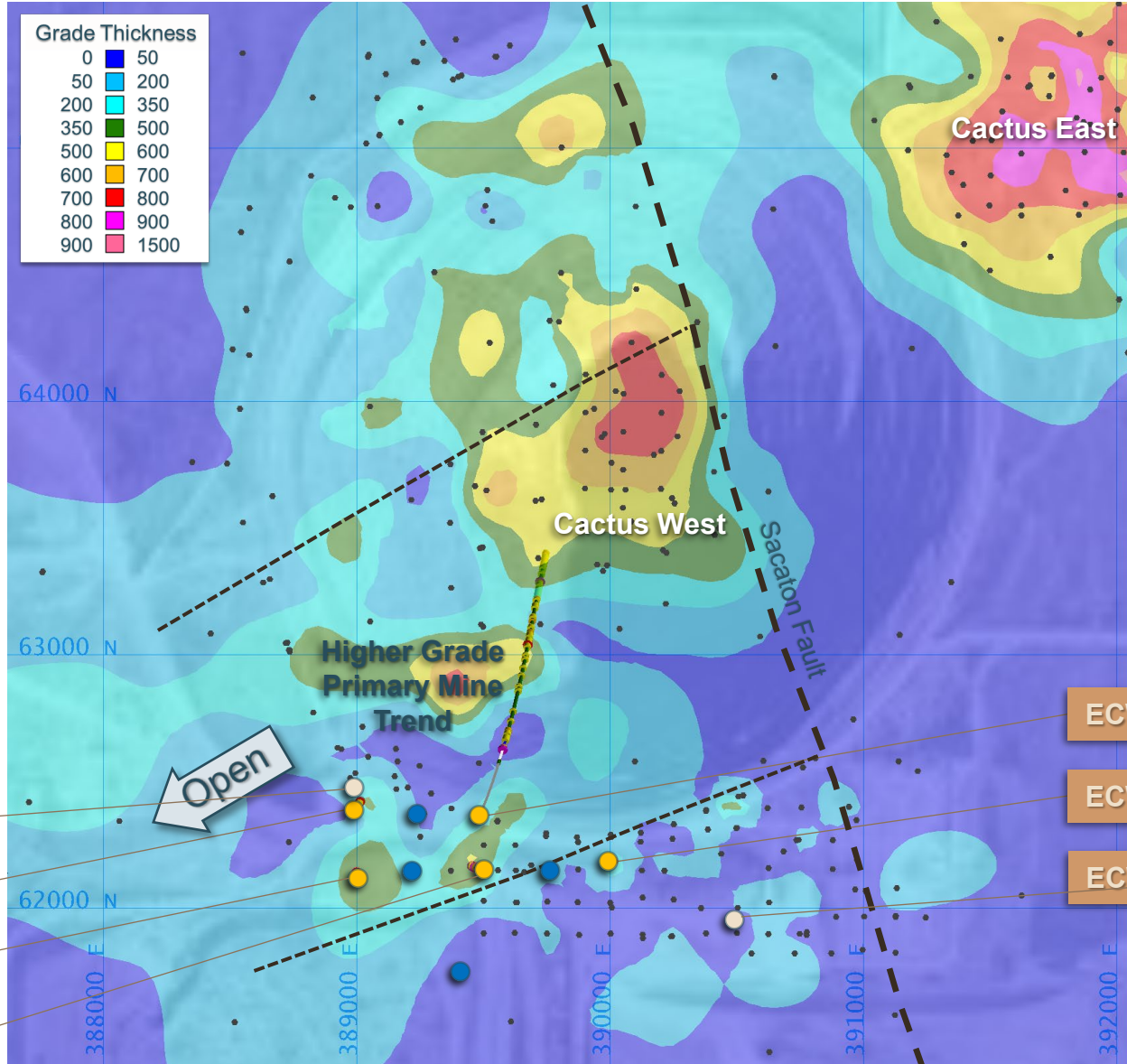
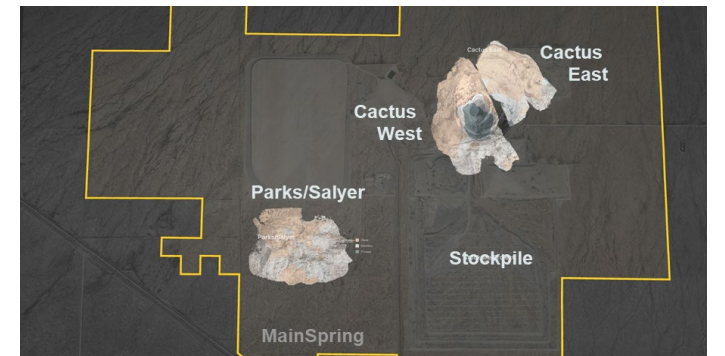


Cactus West Plan View June 10, 2024

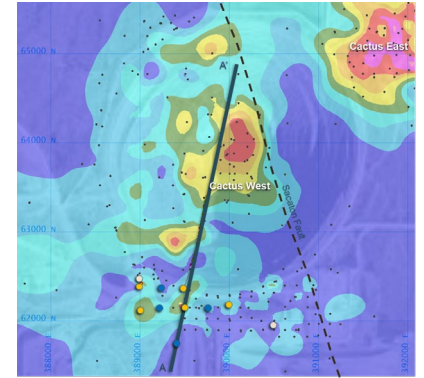
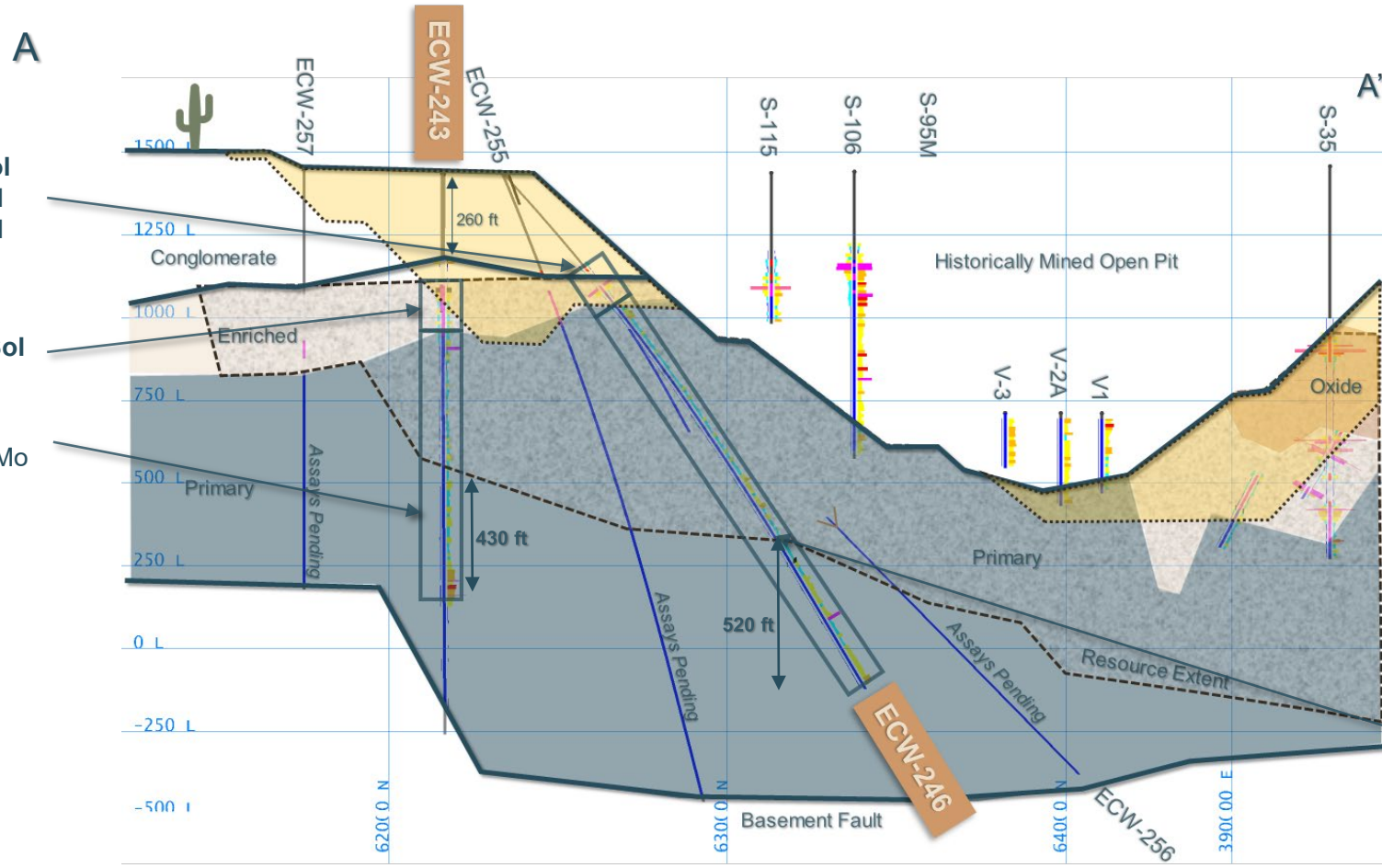


- June 10 Press Release
- Assays Pending
- Previously Released



Grade Thickness = CuT % x Vertical Thickness (ft)
Grade thickness calculations include the entire assayed mineralization package down hole. No grade cutoffs or grade capping has been applied

Cactus West A-A' Cross Section June 10, 2024



Open Pit Mine Plan (PFS 2024)
 PFS MI&I Resource Extent

20.0 ft @ 0.18% CuT, 0.11% Cu TSol
35.4ft @ 0.59% CuT, 0.58% Cu TSol
30.4ft @ 0.33% CuT, 0.11% Cu TSol

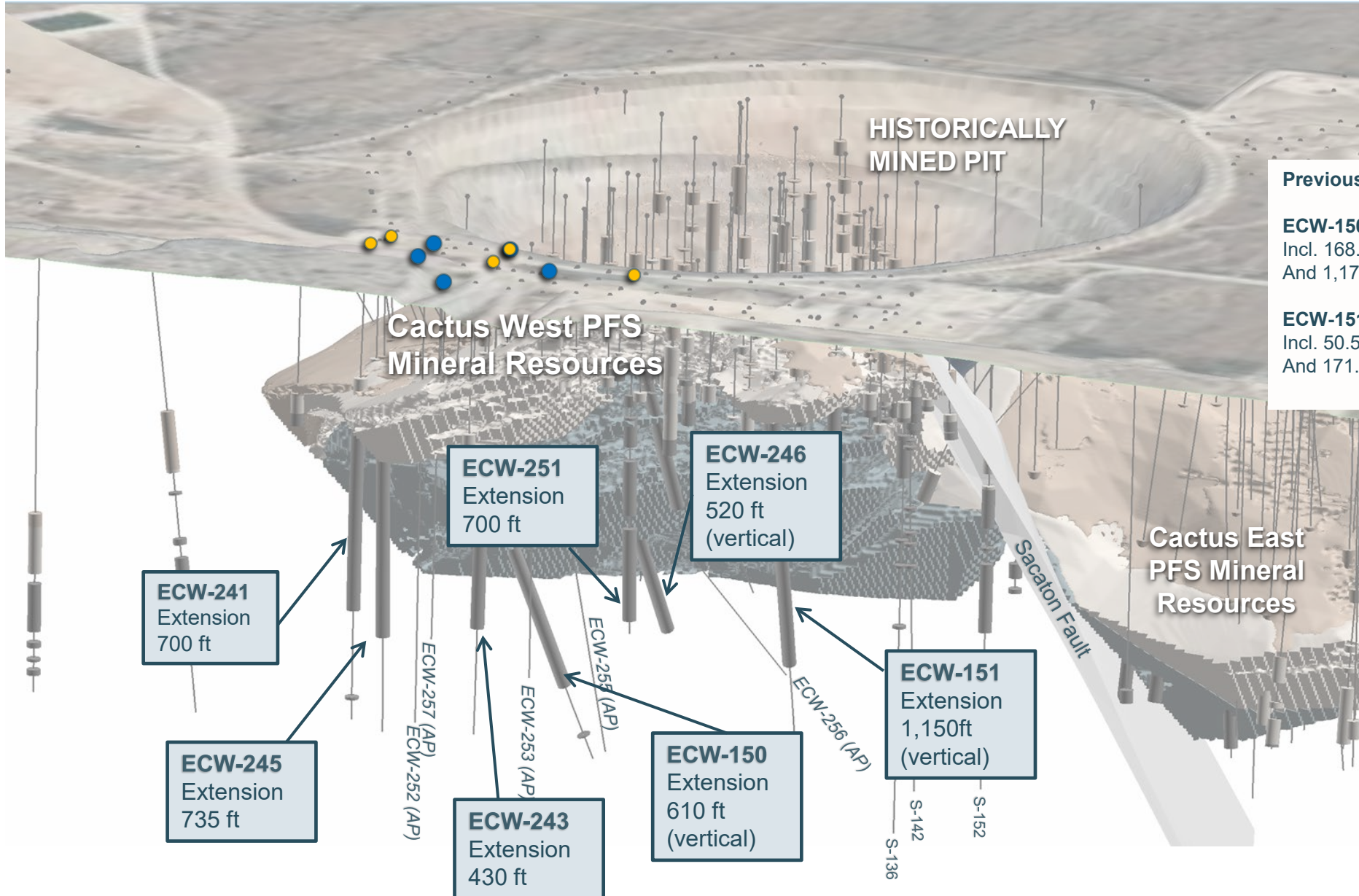
190.7 ft @ 0.35% CuT, 0.30% Cu TSol

796 ft @ 0.33% CuT, 0.011% Mo
 Incl. 131.6 ft @ 0.62% CuT, 0.029% Mo

1370.4 ft @ 0.31% CuT
 (hole terminated in primary)
 Incl. 36 ft @ 0.52% CuT
 And 111.0 ft @ 0.41% CuT
 And 147.0 ft @ 0.44% CuT
 And 129.0 ft @ 0.45% CuT

Intervals Outside Mineral Resources

Oblique View Looking NNW at Cactus West June 10, 2024

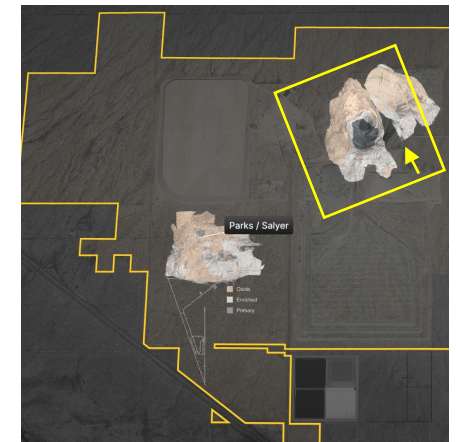


- June 10 Press Release
- Assays Pending (AP)

Previously Reported -

ECW-150 - 1,416.2 ft @ 0.45% CuT, 0.01% Mo
 Incl. 168.0 ft @ 0.62% CuT, 0.51 Cu TSol (enriched)
 And 1,174.2 ft @ 0.43% CuT, 0.011% Mo (primary)

ECW-151 - 1,495.9 ft @ 0.24% CuT, 0.003% Mo (primary)
 Incl. 50.5 ft @ 1.00% CuT, 0.001% Mo
 And 171.9 ft @ 0.59% CuT, 0.017% Mo



500 ft = 152 m

ECW-241 Enriched: Disseminated Chalcocite in Mp Breccia



1.099% CuT
1.094% TSol
0.001% Mo

10.0 ft Interval
453.0 ft – 463.0 ft
 (3.0 m, 138.1 m – 141.1 m)

Within:
 0.34% CuT
 0.27% TSol
 0.005% Mo

316.4 ft interval
433.6 ft – 750.0 ft
 (96.4 m, 132.2 m – 228.6 m)

ECW-243 Primary: Patchy and Disseminated Chalcopyrite in Fault Breccia



0.813% CuT
0.045% Mo

9.8 ft Interval
1,248.2 ft – 1,258.0 ft
(3.0 m, 380.5 m – 383.4 m)

Within:

0.33% CuT
0.011% Mo

796.0 ft interval
515.6 ft – 1,311.6 ft
(242.6 m, 157.2 m – 399.8 m)

ECW-245 Primary: Disseminated and Patchy Chalcopyrite in Faulted Mp



0.767% CuT
0.009% Mo

10.0 ft Interval
1,092.0 ft – 1,102.0 ft
(3.0 m, 332.8 m – 335.9 m)

Within:
0.29% CuT
0.009% Mo

921.9 ft interval
522.0 ft – 1,443.9 ft
(281.0 m, 159.1 m – 440.1 m)

ECW-251 Enriched: Disseminated and Veinlet Chalcocite in Gr-Mp Breccia



0.983% CuT
0.959% TSol
0.001% Mo

10.0 ft Interval
271.0 ft – 281.0 ft
 (3.0 m, 82.6 m – 85.6 m)

Within:
 0.50% CuT
 0.48% TSol
 0.002% Mo

99.2 ft interval
 220.8 ft – 320.0 ft
 (30.2 m, 67.3 m – 97.5 m)

ECW-251 Primary: Disseminated Chalcopyrite in Fault Breccia



0.563% CuT
0.053% TSol
0.016% Mo

10.0 ft Interval
1,177.0 ft – 1,187.0 ft
 (3.0 m, 358.7 m – 361.8 m)

Within:

0.18% CuT
 0.03% TSol
 0.003% Mo

819.0 ft interval
 408.0 ft – 1,227.0 ft
 (249.6 m, 124.4 m – 374.0 m)