

## THE DISEASE

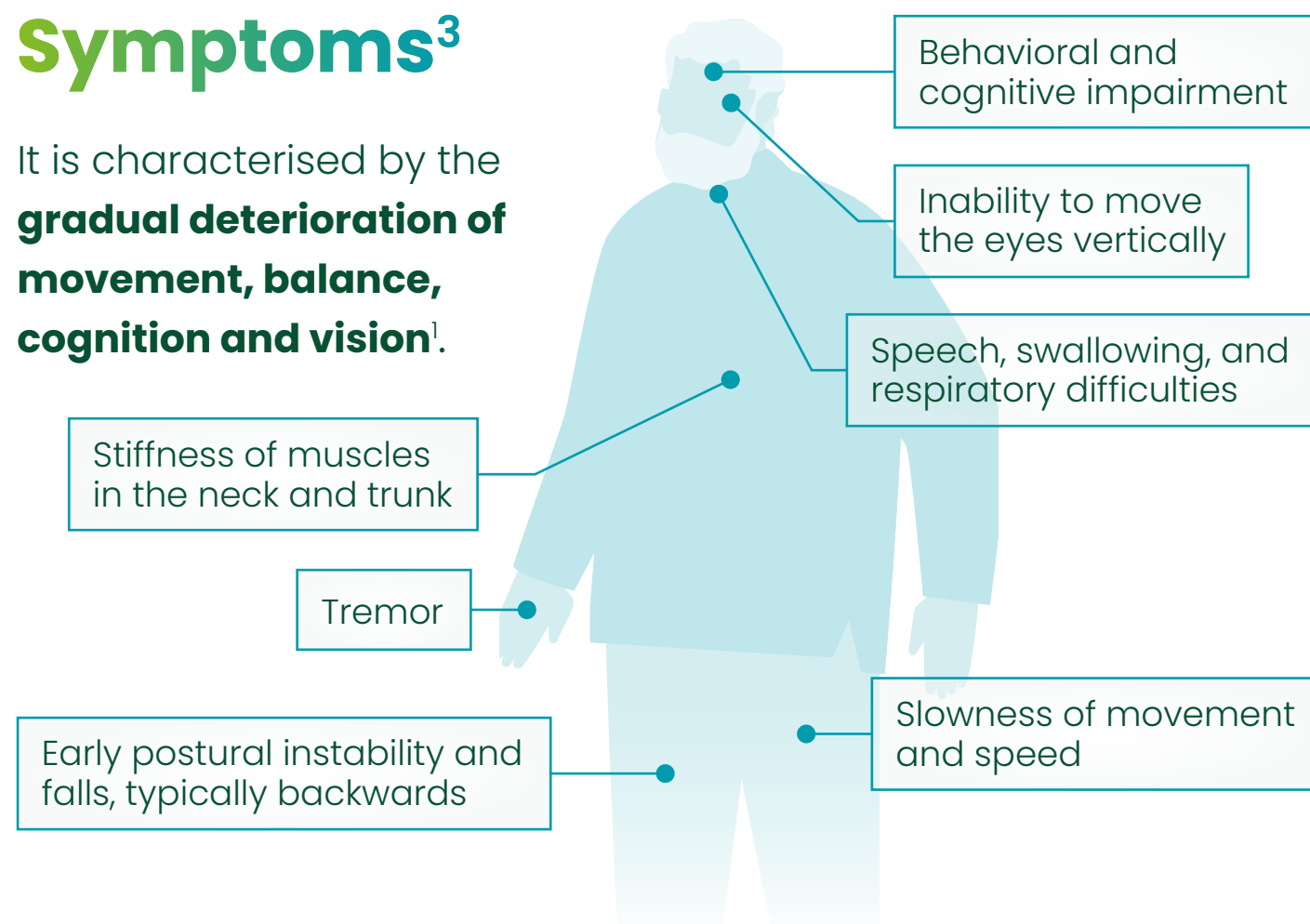
**PSP**

- It is an **uncommon neurodegenerative disease** caused by the accumulation of a **protein** called **tau** in certain areas of the brain<sup>1</sup>.
- It is a **primary tauopathy** (tau **aggregation** is the main **component** of the disease)<sup>2</sup>.

Tau Protein Aggregation

## Symptoms<sup>3</sup>

It is characterised by the **gradual deterioration of movement, balance, cognition and vision**<sup>1</sup>.



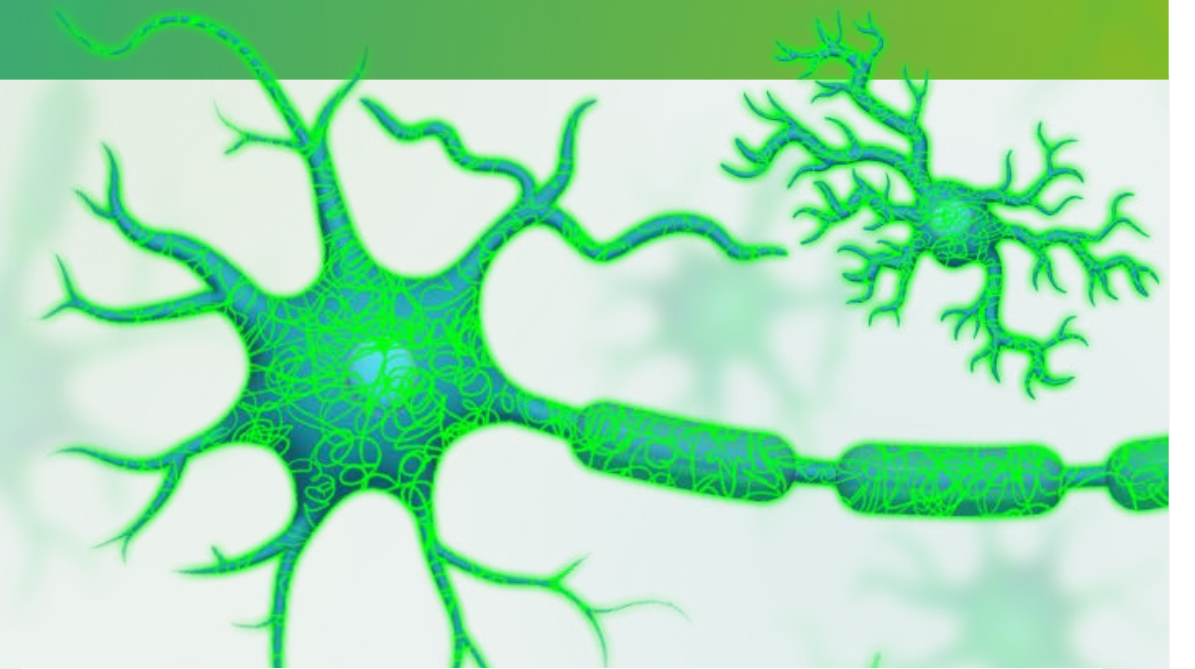
- **It is a rare disease**<sup>1,3</sup>.
- To date, **PSP has no cure**. Its treatment remains symptomatic, **supportive, and no disease-modifying therapy has been approved yet**<sup>3</sup>.

## WHAT CAUSES PSP?

**PSP onset is driven by the accumulation of tau inside brain cells, such as neurons and glial cells. This abnormal accumulation can lead to improper functioning and eventual death of brain cells**<sup>1,2,4</sup>.

PSP is generally considered a **sporadic disease**, meaning that it occurs randomly without a known cause<sup>1,5</sup>.

However, there are some hypotheses that could explain the progressive damage of certain brain regions<sup>1,5</sup>:



- Random **genetic mutations**. However, most people with PSP do not have known genetic risk factors.
- Advanced age**.
- Exposure to certain **environmental factors**, such as **toxins**, unconventional **infections**, or unknown **chemicals** in food, air, or water.
- Free radicals** which are toxic compounds created during normal cell function that can damage cells if not removed.